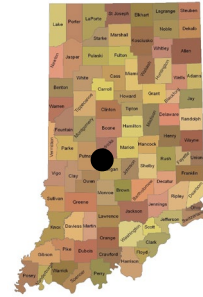


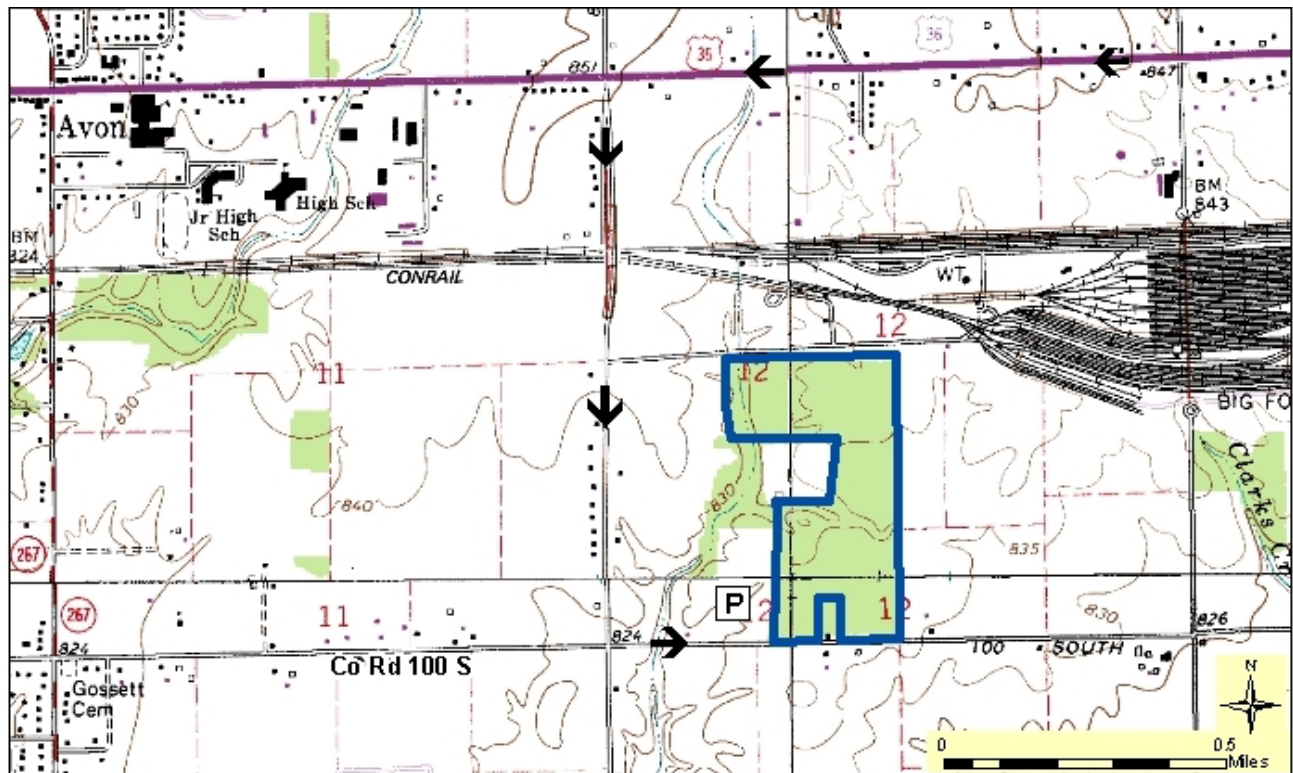
Burnett Woods Nature Preserve

County: Hendricks Size: 69 acres
Ownership: Central Indiana Land Trust
Parking Coordinates: 39.74958, -86.37698



Location and Access

Parking and trail. From Indianapolis drive west on Hwy 36 toward Avon. Turn south (left) on CR 800E just outside of Avon. Go about 1 mile south to CR 100S. Turn east (left) on 100S and park at the Light and Life Methodist Church on the corner. The preserve will be on the left about 0.25 mile up the road. If visiting on Sunday, please wait until after services. An Easy ½ mile trail begins at the southwest corner and loops through most of the preserve.



Description: Burnett Woods is a high-quality example of a Central Till Plain flatwoods with some mesic upland forest. Mature woodlands and rich understory free of exotic invasive plants provide important habitat for many central Indiana woodland species, including the Wood Thrush, Red-Headed Woodpecker, and eastern box turtle. This high natural integrity in increasingly suburban Hendricks County offers many opportunities for educational and cultural enrichment for the surrounding communities.

Further Information:

Central Indiana Land Trust, 1500 N. Delaware St, Indianapolis, IN 46225. (317) 631-5263.
Division of Nature Preserves Central Regional Ecologist,
Danielle Williams: dpwilliams@dnr.IN.gov