

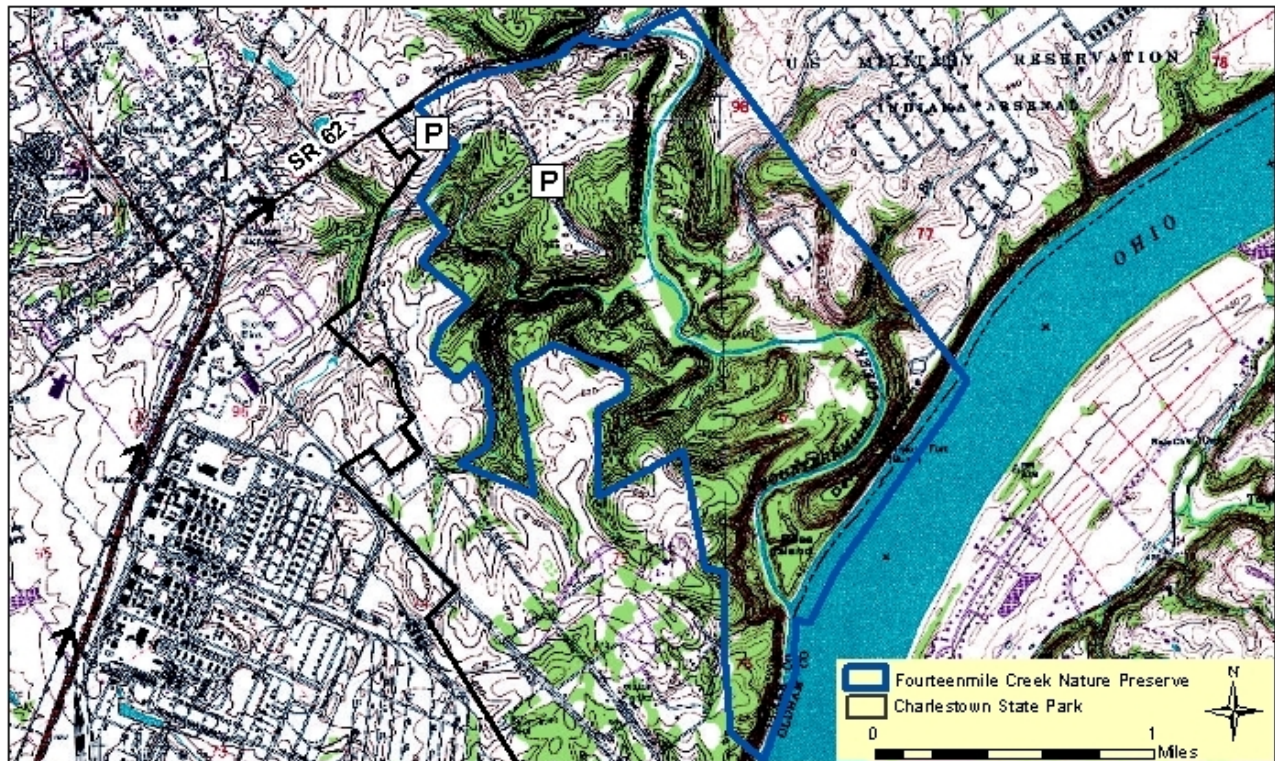
Fourteenmile Creek Nature Preserve

County: Clark Size: 1602 acres
Ownership: State Parks - IDNR



Location and Access

Parking and trails. This nature preserve is part of Charlestown State Park. Take I-65 south to Henryville and SR 160 (exit 19). Take SR 160 through town, and follow this to Charlestown (about 9 miles). Where SR 160 intersects with SR 403 and SR 3, take SR 3 south through town to SR 62. Turn left onto SR 62 and go about 1 mile. The park entrance will be on the right. State Park trails 1 – 5 all go through the nature preserve.



Description: This preserve contains high-quality limestone cliffs, and a range of dry upland to floodplain forests. The dry upland areas support species that can grow in well-drained soils, such as Eastern red cedar, chinquapin oak, prickly pear cactus, shooting star, puccoon, nodding onion, and the adder's tongue fern. The area known as the Devil's Backbone, at the south end of the preserve, is has a moister habitat, with sugar maple, tulip, red, white, black, and chinquapin oaks, American beech, and a variety of flowers and ferns such as mayapple, columbine, twinleaf, Jack-in-the-pulpit, sessile trillium, and walking fern.

Further Information:

Charlestown State Park, 12500 St Rd 62, Charlestown, IN 47111. (812) 256-5600.

www.in.gov/dnr/parklake/

Division of Nature Preserves Southeast Regional Ecologist, Jason Larson: jl Larson@dnr.in.gov