

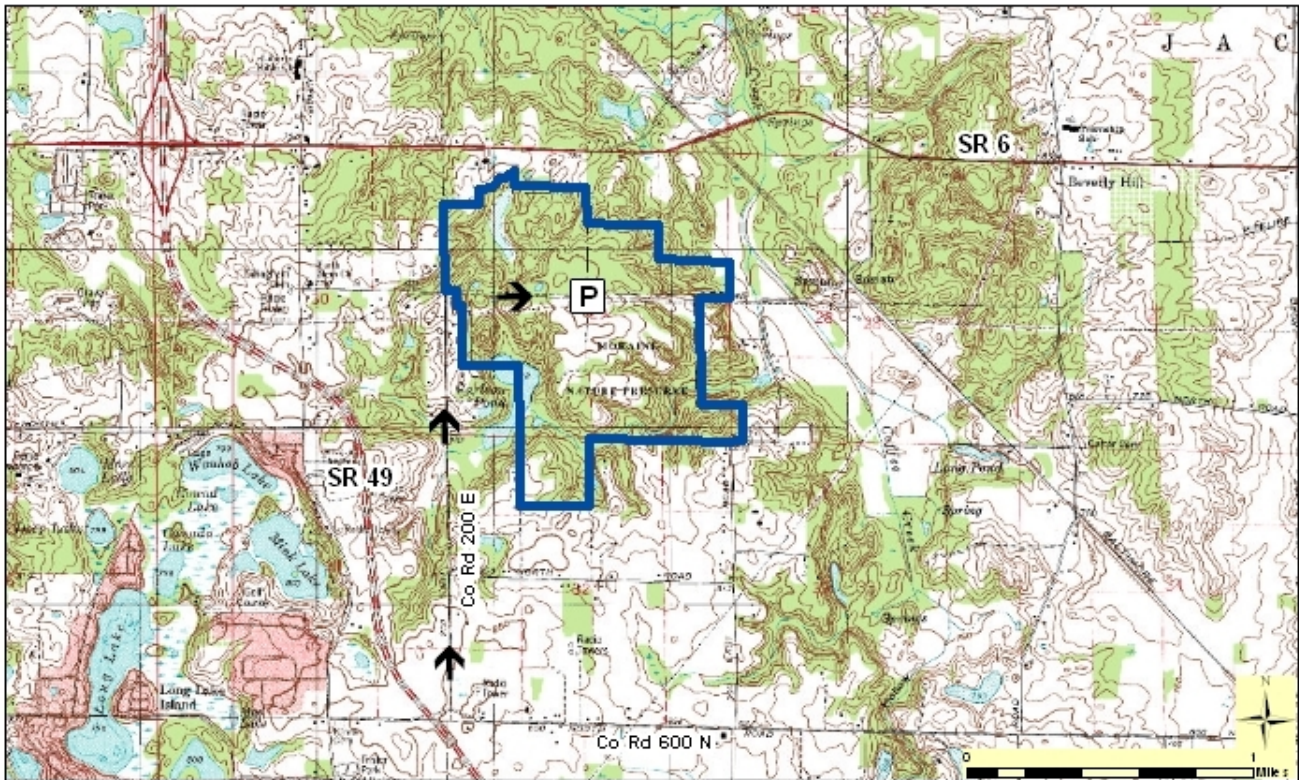
# Moraine Nature Preserve

County: Porter      Size: 474 acres  
Ownership: Nature Preserves - IDNR



## Location and Access

**Parking and trails.** From Valparaiso, go north on SR 49 to CR 600 N, turn right and then immediately left on CR 200 E. Take CR 200 E north to the “T” intersection. Turn right on CR 750 N, the entrance to the preserve. Parking is located along this road. Several trails can be accessed from the parking lot.



**Description:** This preserve is a fine example of the many land forms associated with the Valparaiso Moraine. The Valparaiso Moraine runs for several hundred miles from southern Wisconsin through northern Illinois and northwest Indiana into west-central Michigan. The moraine was formed by the southern edge of the Lake Michigan Lobe of Wisconsin glaciations. The nature preserve contains a combination of rolling ridges, steep hills, muck pockets, pot holes, and a shallow pond. Mature beech-maple forest is found on some of the uplands and ravines. Buttonbush and black willow surround a number of pot holes and ponds. Several upland areas are in various stages of succession.

## Further Information:

Division of Nature Preserves Coastal Regional Ecologist, Derek Nimetz: [dnimetz@dnr.in.gov](mailto:dnimetz@dnr.in.gov)