

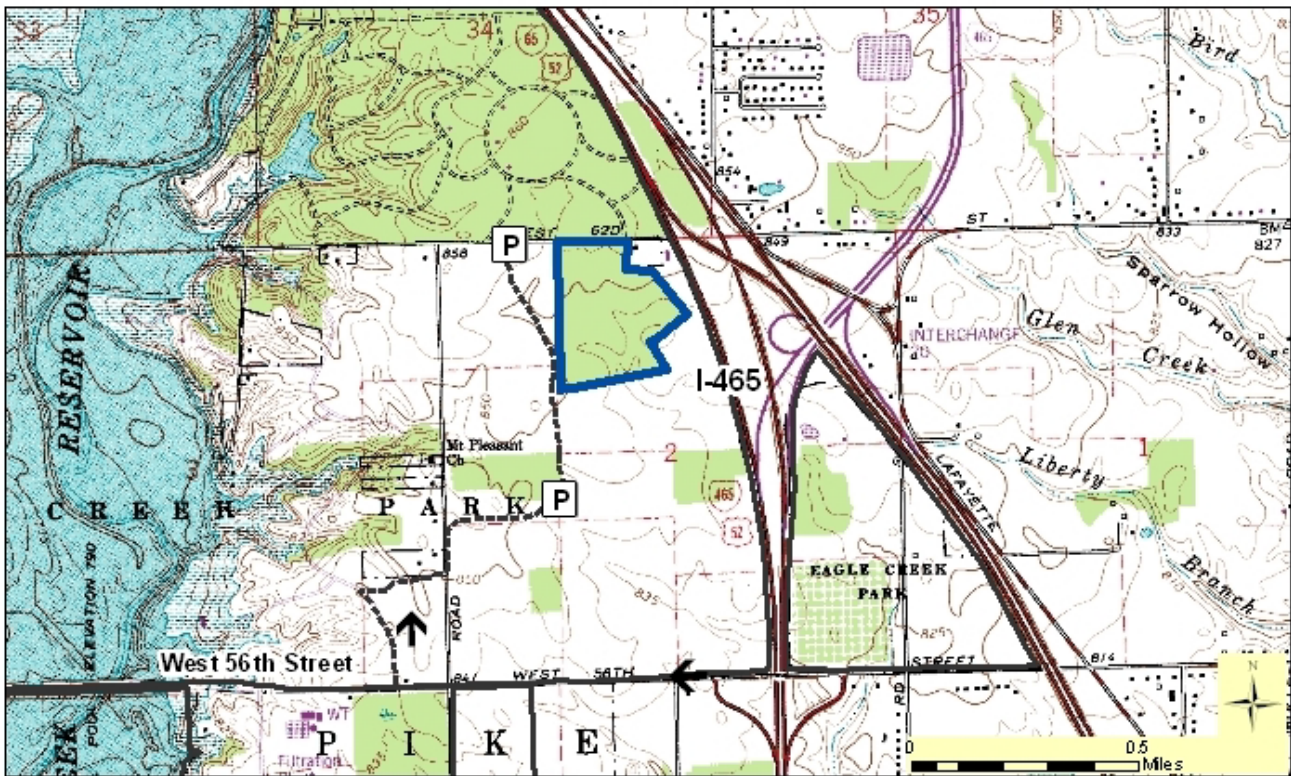
Spring Pond Nature Preserve

County: Marion Size: 42 acres
Ownership: Indy Parks and Recreation
Parking: North = 39.86687, -86.28828
 South = 39.85849, -86.28518



Location and Access

Parking and trail. Spring Pond is in Eagle Creek Park. The park is on the northwest side of Indianapolis. Spring Pond is on the east side of the reservoir, on the south side of 62nd St just west of the park maintenance building. Enter through the park's 56th St entrance. Turn right onto Eagle Creek Parkway East Dr, then take the first gravel pull-off on the right. Continuing north there is another parking lot near the corner of 62nd Street and the Parkway. There is a trail through the preserve.



Description: This is a relatively level, poorly drained upland site, dominated by a wet-mesic forest of beech, sugar maple, sycamore, bur oak, and ash. There are many wet, poorly drained places scattered throughout. The tract is primarily mature second-growth, and represents the type of forest community that once covered the large flat area in central Indiana known as the Tipton Till Plain.

Further Information:

Eagle Creek Earth Discovery Center, 5901 Delong Rd, Indianapolis, IN 46278, (317) 327-7148.
Division of Nature Preserves Central Regional Ecologist, Danielle Williams: dpwilliams@dnr.IN.gov