

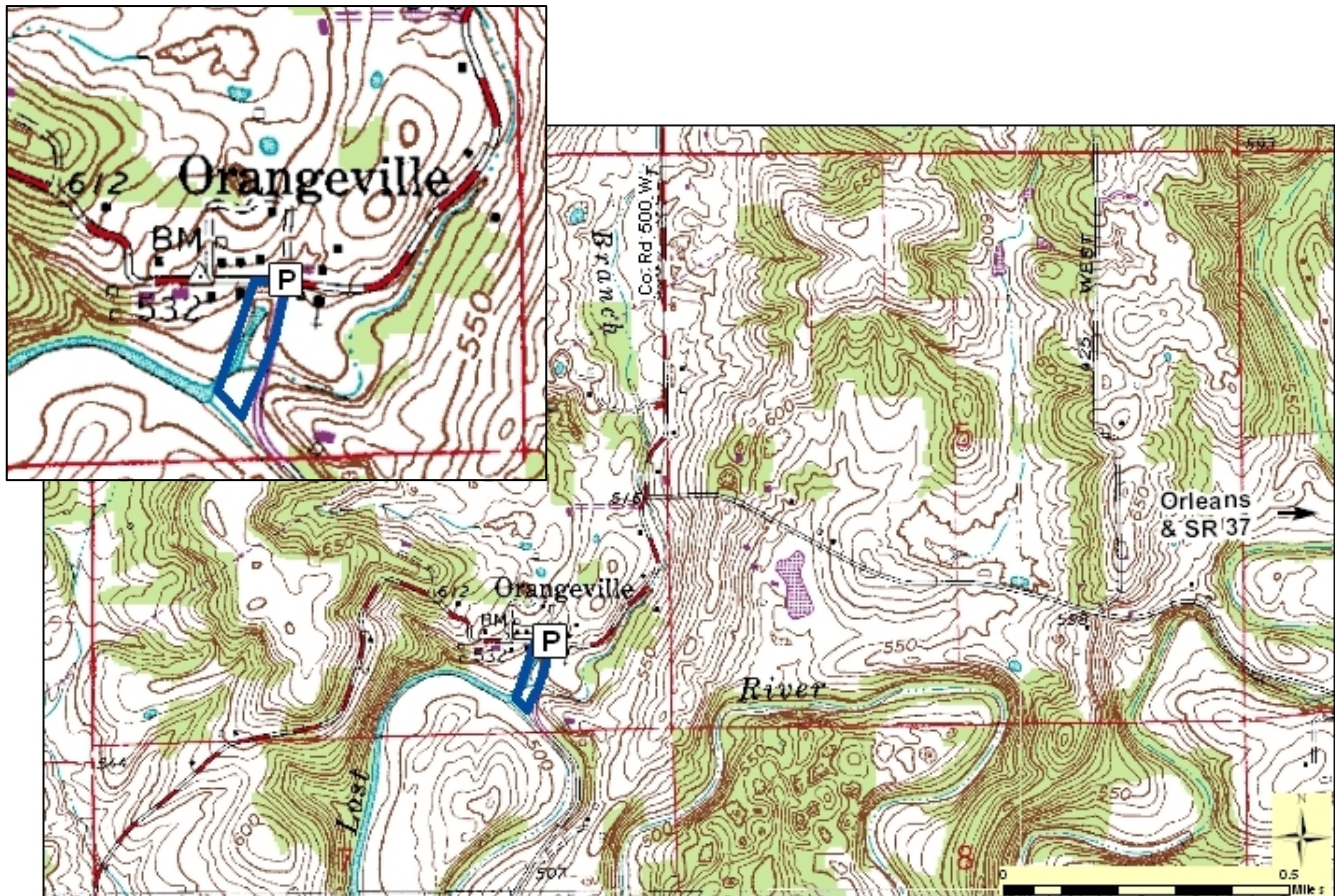
# Orangeville Rise of Lost River Nature Preserve

County: Orange      Size: 3 acres  
Ownership: Indiana Karst Conservancy



## Location and Access

**Parking; no trail.** Orangeville is about 7 miles west of Orleans. Look for the sign to Orangeville off of SR 37, south of Orleans, or the sign for Orangeville on SR 56 between Paoli and Prospect. Park in the pull-off on the south side of Orangeville.



**Description:** The large artesian spring at Orangeville is actually on a major tributary to the Lost River. In the upper portions of the watershed Lost River and its tributaries run below ground level. By the time they rise to the surface, they are sizable streams. The Orangeville Rise drains an area of about 30 square miles to the north and northeast of Orangeville. The water emerges from a cave into a rock-walled pit 220 feet across, which is at the base of a low cliff of St. Genevieve limestone. From there, the stream runs southwest and merges with the main channel of Lost River. The entire watershed of Lost River occupies 355 square miles in five counties. The region is known for its sinkholes, caves, underground streams, and other karst features.

## Further Information:

Indiana Karst Conservancy, Box 2401, Indianapolis, IN 46206. [www.caves.org/conservancy/ikc/](http://www.caves.org/conservancy/ikc/)  
Division of Nature Preserves Southeast Regional Ecologist, Jason Larson: [jl Larson@dnr.in.gov](mailto:jl Larson@dnr.in.gov)