

Center for Deaf & Hard of Hearing Education

Annual Report Fiscal Year 2021



Indiana
Department
of
Health

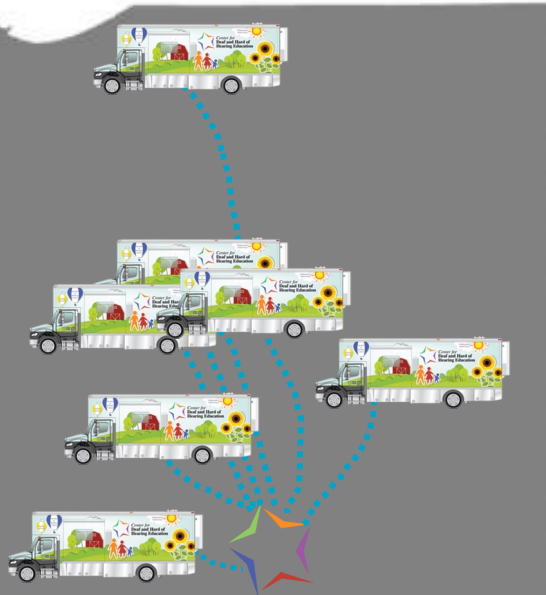


Center for Deaf
and Hard of Hearing
Education

Mobile Unit

April 2022

CDHHE's mobile unit hit the road in February 2021, piloting our initial visits with Logansport Community Schools. We expanded to other sites toward the end of the fiscal year, with our final stop at the Indiana Deaf Education and Educational Interpreters Conference.



Fast Facts

- 182 children were referred to the CDHHE Network for ongoing early intervention services.
- Children from 65 Indiana counties were provided direct services from the Center.
- 1,000+ hours of interpretation were provided for families and professionals in 8 different languages.
- 120+ assessments were provided.
- 70+ individuals participated in our Deaf and Hard of Hearing Teacher Roundtables.
- 2000+ miles were traveled in the mobile unit.
- 500+ IDEAL datapoints were reported.
- 387 hearing aids were provided through the HAAPI program.
- Playgroups transitioned to virtual story times: Stories, Signs & Snacks.

Haven't seen our
mobile unit?
Check out our
[Virtual Tour!](#)

Early Intervention

Despite the COVID-19 pandemic reducing in-home services, our CDHHE Network providers continued our provision of Deaf Mentor, DT-DHH, Parent Advisor and Speech Therapy services at a rate similar to fiscal year 2020, with more than 575 services provided to more than 300 children. First Steps, and our CDHHE Network in turn, implemented a hybrid model of service, enabling families to engage in services both in their homes and via teleintervention, to ensure continued availability during the pandemic. Through this hybrid approach, our providers facilitated more than 4,500 sessions with families using a coaching model.

Audiology

We continued our provision of clinical services, with a breakdown of ~50% hearing evaluations and 10% for each of the following: ABRs, earmold impressions/fittings, hearing aid fittings and hearing aid consultations. We pride ourselves on the all-encompassing nature of our services, shown through the more than 1,300 consultations that occurred in addition to these clinical services.

As in-person professional development opportunities moved to virtual formats due to COVID-19, we shifted our Topics in Pediatric Audiology Conference to be held as a webinar. We had more than 70 attendees for this inaugural conference covering a variety of topics, including cochlear implant updates, vestibular considerations and technology in educational environments.

Children received hearing aids through the Hearing Aid Assistance Program of Indiana

229

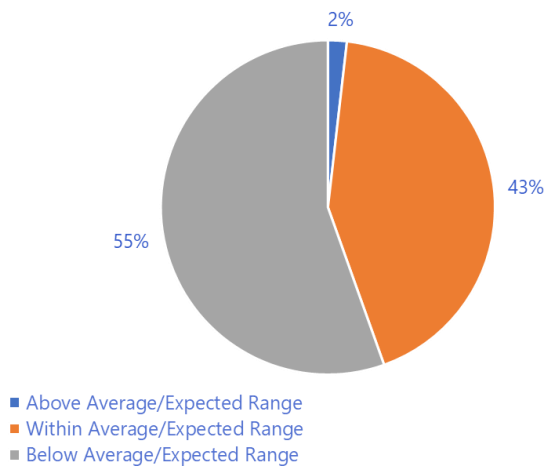
haapi hearing aid assistance program of indiana
administered by **hear** INDIANA

Indiana Deaf Education and Assessments of Language (IDEAL)

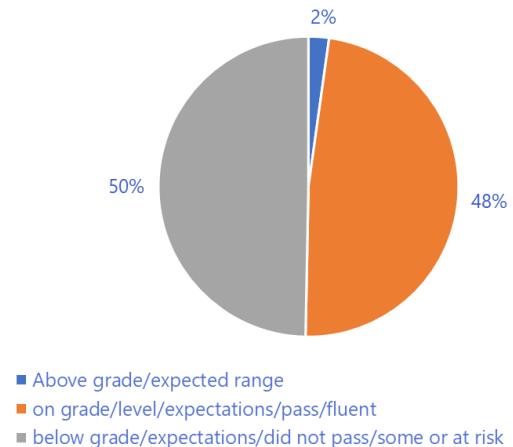


Fiscal Year 2021 was the initial year for reporting results on the approved [List of Tools & Assessments](#). Overall results are shown in the pie graphs below. Review our [FY21 Annual Report](#) for additional details.

Language Assessment Results



Literacy Assessment Results



Deaf Education

In an effort to support new deaf and hard of hearing teachers and those on emergency permit, we created a new professional learning community: N'DEEP — New Deaf Educators and Emergency Permit Professionals. This group holds virtual meetings monthly with about 50 participants. We continued our DHH Teacher Roundtables, holding these virtually with up to 80 participants quarterly.

Documents were created to assist with definitions and considerations for deaf and hard of hearing students related to LRE: [Least Restrictive Environment](#) and [Language Rich Environment](#), [school hearing screenings](#) (including [considerations for DHH teachers](#)), as well as an updated version of our [Guidelines for Assessment](#).

For additional information on Center programming and to access our past quarterly newsletters: www.cdhhe.health.in.gov

