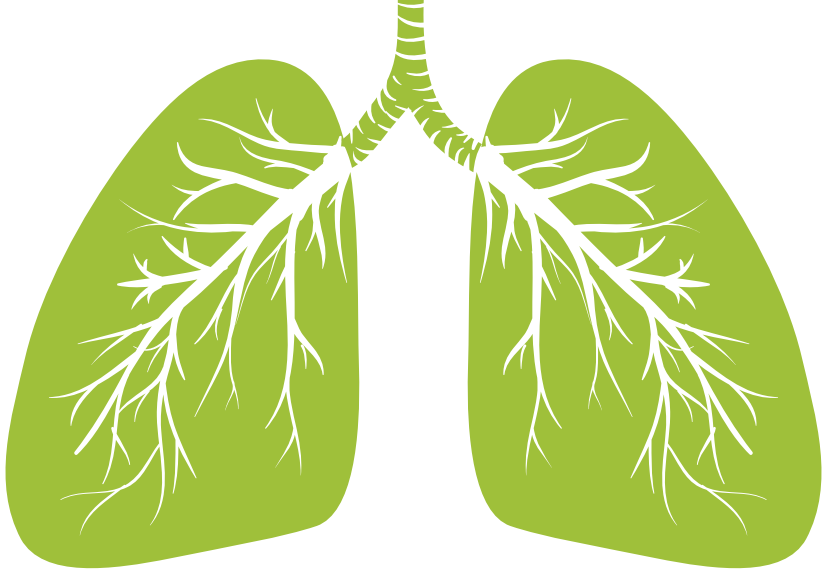


# Asthma

## IN INDIANA



1 Approximately **650,000** people in Indiana currently have asthma.



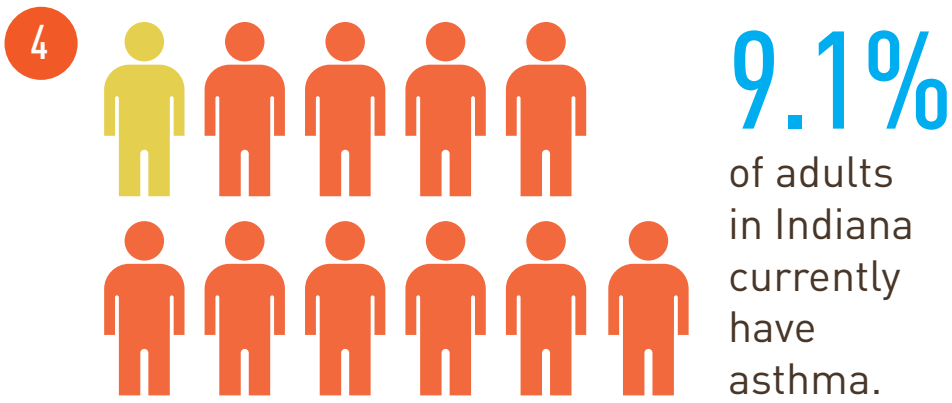
2 Asthma is a disease that affects your **lungs**.

It is one of the most common long-term diseases and affects people of all ages. Asthma causes wheezing, breathlessness, chest tightness, and nighttime or early morning coughing.



3 **73** people died from asthma in 2011.

That's **1 person every 5 days**. Of those who died from asthma, 49.3% were 65 years and older at time of death.

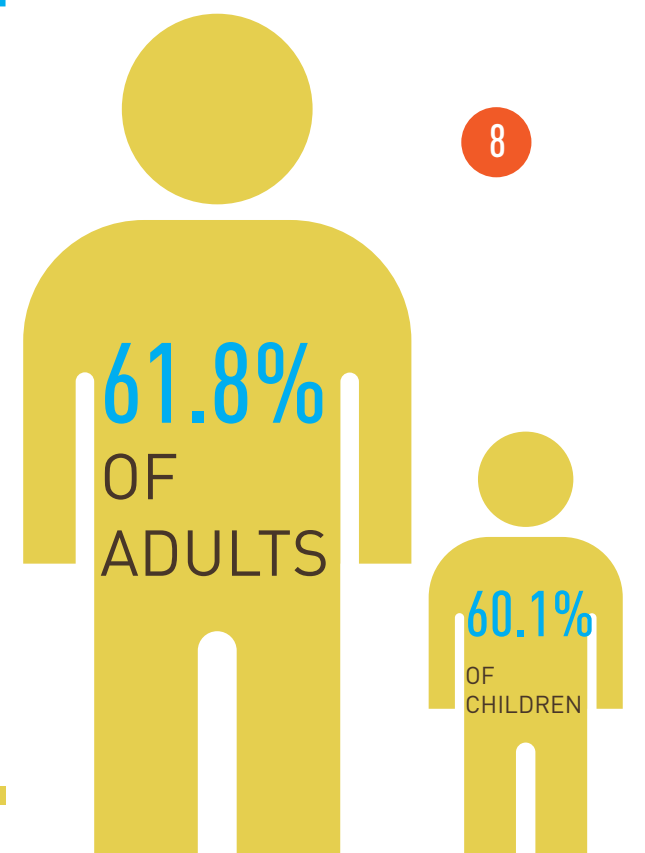


7 During the past **12 months**, Indiana adults with asthma were unable to work or carry out their usual activities for a total of **4,152,381** days.



6 Each missed work day costs the average Indiana family

# \$128



9 **30.6%** (about 1 in 3) adults with asthma are unable to buy asthma medications due to the cost.

with a current asthma diagnosis had at least **2 routine checkups** for their asthma in the past 12 months.

Sources: 1 4 5 Centers for Disease Control and Prevention (CDC) and Indiana State Department of Health Data Analysis Team [ISDH DAT], 2013. Behavioral Risk Factor Surveillance System Prevalence Data, 2012 adults; 2011 children. 2 CDC 3 ISDH DAT, 2013. Indiana Mortality Report, 2011. 6 US Census Bureau. American Community Survey, 2012. 7 8 9 CDC and ISDH DAT, 2013. BRFSS Asthma Call-back Survey.

