

Paraprofessionals Training Part 4

Sepsis/Antibiotic Stewardship/ Multidrug-Resistant Organisms

Terri Bogue MSN, RN, PCNS-BC

UNIVERSITY OF INDIANAPOLIS

CENTER FOR AGING & COMMUNITY



Objectives

- Describe the six signs of sepsis.
- Recognize that prompt treatment of sepsis is a medical emergency (resuscitation begins immediately, IV antibiotics within 1 hour) and requires immediate action.
- Discuss the essential basic principles of antibiotic stewardship, including how antibiotics can cause harm.
- Realize the significance and gravity of multidrug-resistant organisms (MDROs).
- Identify MDROs commonly found in long-term care.
- Describe how resident care must be done differently when a resident has an MDRO.

Sepsis – Serious Problem



Each year, at least **1.7** million adults in America develop sepsis.

Nearly **270,000** Americans die as a result of sepsis each year.

1 in **3**

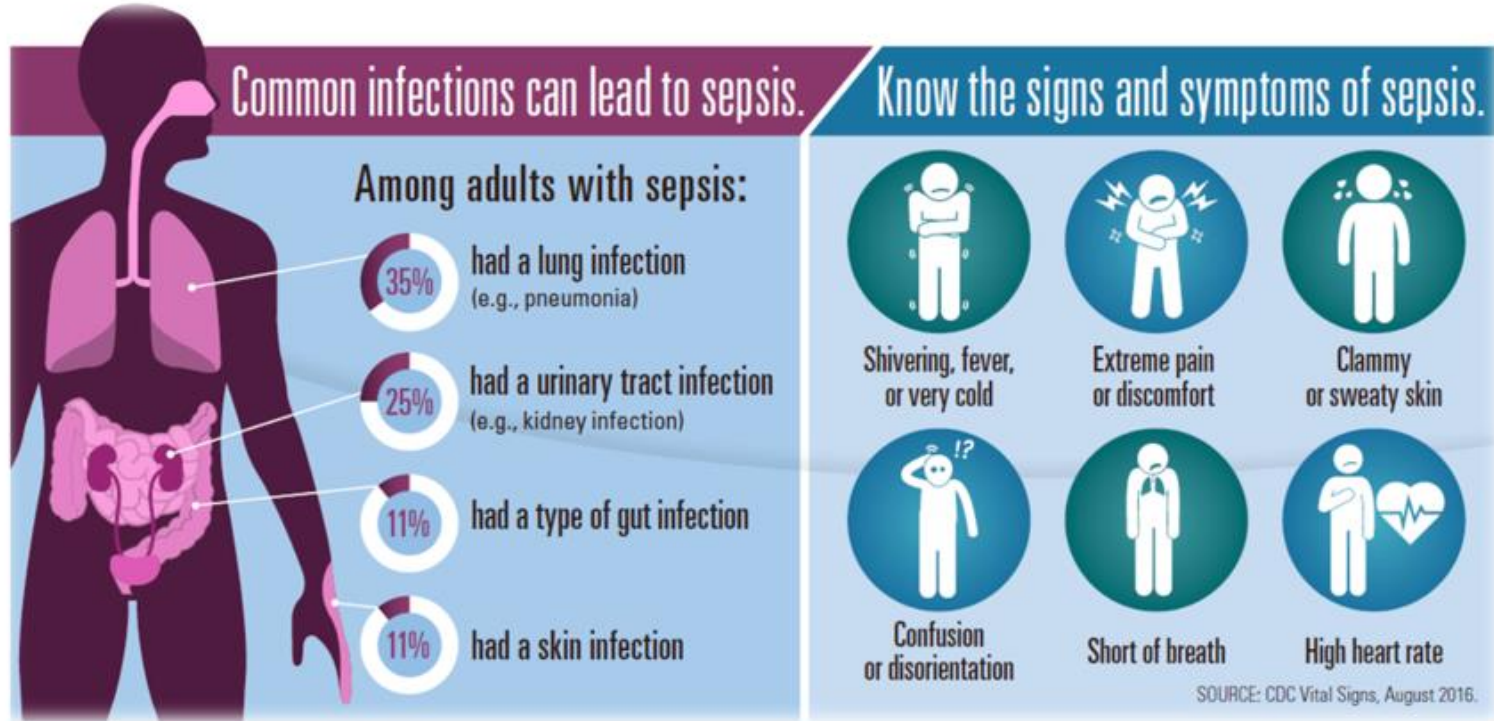
One in three patients who die in a hospital have sepsis.



Sepsis

The body's overwhelming and life-threatening response to an infection, which can lead to tissue damage, organ failure and death.

Knowledge is Power





Antibiotic Stewardship

Bacteria Only



Impact of Antibiotics

Adverse Drug Reactions

- *Clostridium difficile*
- Kidney injury
- Sepsis



Antibiotic Resistance

- Ability of bacteria to avoid the killing effect of an antibiotic
- Passed from one bacterium to another
- Spread from person-to-person



Multidrug- Resistant Organisms (MDRO)



Impact

2,000,000 Americans
develop serious infections
from MDROs each year



Resistant Organisms



Abbreviation	Antibiotic Resistance
MRSA	Methicillin-resistant <i>Staphylococcus aureus</i>
VRE	Vancomycin-resistant <i>Enterococcus</i>
ESBL	Extended-spectrum beta lactamase (<i>E. coli</i> , <i>Klebsiella</i>)
CRE	Carbapenem-resistant <i>Enterobacteriaceae</i> (<i>E. coli</i> , <i>Klebsiella</i>)
MDR	Resistant to three or more antibiotic classes (<i>Pseudomonas aeruginosa</i> / <i>Acinetobacter</i> species)

Prevention



Thank you for being a hero!

