



Assay Calibration Report

Assay Information

Assay Name: Cylindrospermopsin 1X Units: ng/mL
 Assay Mode: 4-Parameter Logistic # of decimals: 3
 Normal: 0.050 - 2.000 Assay Description:

Controls:

Normal Control

Standards:

Std1, Concentration = 0.000, Minimum number to use: 2
 Std2, Concentration = 0.050, Minimum number to use: 2
 Std3, Concentration = 0.100, Minimum number to use: 2
 Std4, Concentration = 0.250, Minimum number to use: 2
 Std5, Concentration = 0.500, Minimum number to use: 2
 Std6, Concentration = 1.000, Minimum number to use: 2
 Std7, Concentration = 2.000, Minimum number to use: 2

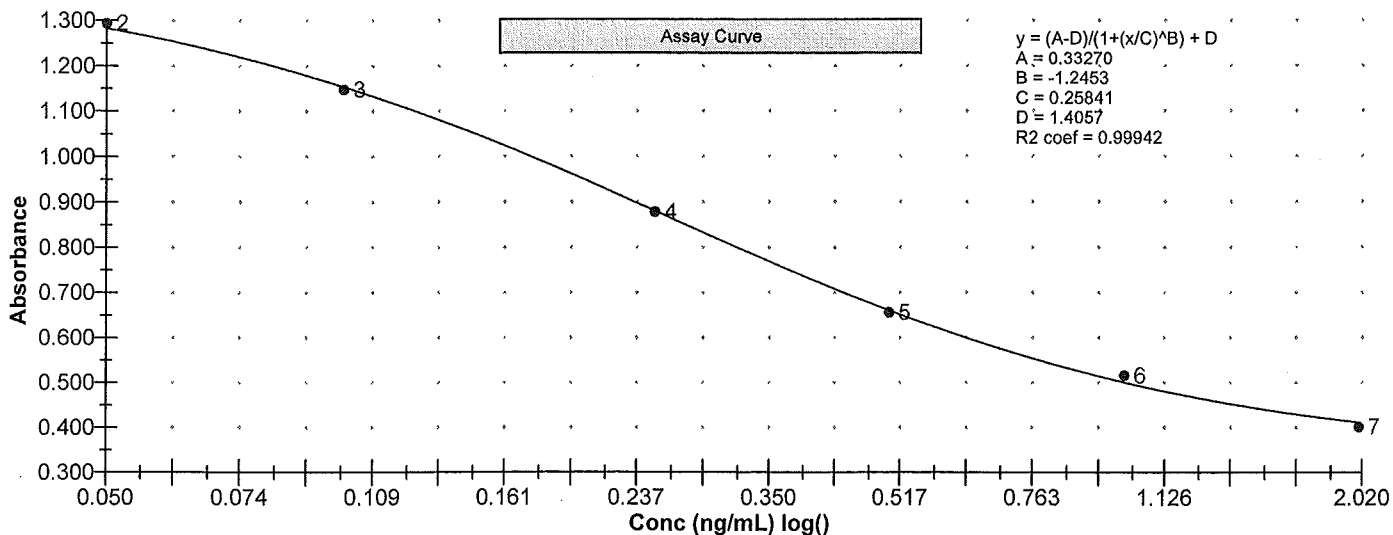
Curve valid interval: 7 days 0 hours

Axis Mode: Y = Abs, X = Log(Conc)

Assay Calibration and Statistics

Name	Absorbance	Concentration	Position
8/29/2012 3:47:44 PM			
Std1	1.386 Abs	0.011 ng/mL	A01
Std1	1.417 Abs	< 0.000 ng/mL	B01
Std2	1.304 Abs	0.042 ng/mL	C01
Std2	1.284 Abs	0.050 ng/mL	D01
Std3	1.117 Abs	0.116 ng/mL	E01
Std3	1.179 Abs	0.090 ng/mL	F01
Std4	0.852 Abs	0.272 ng/mL	G01
Std4	0.904 Abs	0.233 ng/mL	H01
Std5	0.640 Abs	0.538 ng/mL	A02
Std5	0.673 Abs	0.478 ng/mL	B02
Std6	0.523 Abs	0.886 ng/mL	C02
Std6	0.510 Abs	0.948 ng/mL	D02
Std7	0.393 Abs	> 2.000 ng/mL	E02
Std7	0.410 Abs	> 2.000 ng/mL	F02
8/29/2012 3:47:44 PM			
Normal Control	0.561 Abs	0.739 ng/mL	G02
Normal Control	0.605 Abs	0.614 ng/mL	H02

Name	Mean Abs	SD Abs	CV Abs	Mean Conc	SD Conc	CV Conc	Diff Conc
Std1	1.401	0.022	1.56				
Std2	1.294	0.014	1.09	0.046	0.006	12.30	-8.00
Std3	1.148	0.044	3.82	0.103	0.018	17.85	3.00
Std4	0.878	0.037	4.19	0.252	0.028	10.92	0.80
Std5	0.656	0.023	3.55	0.508	0.042	8.35	1.60
Std6	0.516	0.009	1.78	0.917	0.044	4.78	-8.30
Std7	0.401	0.012	2.99				-100.00





Assay Calibration Report

Assay Information

Assay Name: Cylindrospermopsin 1X Units: ng/mL
Assay Mode: 4-Parameter Logistic # of decimals: 3
Normal: 0.050 - 2.000 Assay Description:

Controls:

Normal Control

Standards:

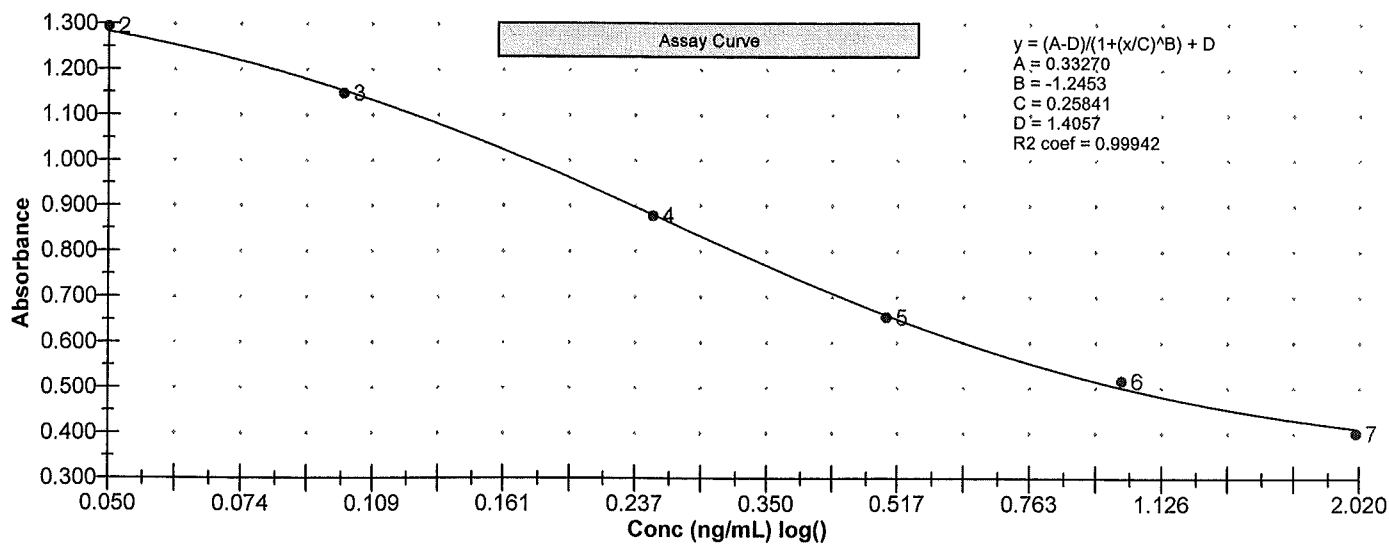
Std1, Concentration = 0.000, Minimum number to use: 2
Std2, Concentration = 0.050, Minimum number to use: 2
Std3, Concentration = 0.100, Minimum number to use: 2
Std4, Concentration = 0.250, Minimum number to use: 2
Std5, Concentration = 0.500, Minimum number to use: 2
Std6, Concentration = 1.000, Minimum number to use: 2
Std7, Concentration = 2.000, Minimum number to use: 2

Curve valid interval: 7 days 0 hours

Axis Mode: Y = Abs, X = Log(Conc)

Assay Calibration and Statistics

Name	Mean Abs	SD Abs	CV Abs	Mean Conc	SD Conc	CV Conc	Diff Conc
Normal Control	0.583	0.031	5.34	0.677	0.088	13.07	





Test Report

Test Information

Name/ID	Assay	Absorbance	Concentration	Interpretation	Reference	Position
8/29/2012 3:47:44 PM						
Std1	Cylindrospermopsin 1X	1.386 Abs	0.011 ng/mL			A01
Std1	Cylindrospermopsin 1X	1.417 Abs	< 0.000 ng/mL			B01
Std2	Cylindrospermopsin 1X	1.304 Abs	0.042 ng/mL			C01
Std2	Cylindrospermopsin 1X	1.284 Abs	0.050 ng/mL			D01
Std3	Cylindrospermopsin 1X	1.117 Abs	0.116 ng/mL			E01
Std3	Cylindrospermopsin 1X	1.179 Abs	0.090 ng/mL			F01
Std4	Cylindrospermopsin 1X	0.852 Abs	0.272 ng/mL			G01
Std4	Cylindrospermopsin 1X	0.904 Abs	0.233 ng/mL			H01
Std5	Cylindrospermopsin 1X	0.640 Abs	0.538 ng/mL			A02
Std5	Cylindrospermopsin 1X	0.673 Abs	0.478 ng/mL			B02
Std6	Cylindrospermopsin 1X	0.523 Abs	0.886 ng/mL			C02
Std6	Cylindrospermopsin 1X	0.510 Abs	0.948 ng/mL			D02
Std7	Cylindrospermopsin 1X	0.393 Abs	> 2.000 ng/mL			E02
Std7	Cylindrospermopsin 1X	0.410 Abs	> 2.000 ng/mL			F02
Normal Control	Cylindrospermopsin 1X	0.561 Abs	0.739 ng/mL			G02
Normal Control	Cylindrospermopsin 1X	0.605 Abs	0.614 ng/mL			H02
AB09934	Cylindrospermopsin 1X	1.449 Abs	< 0.000 ng/mL	Out(LR)	0.050 - 2.000	A03
AB09934	Cylindrospermopsin 1X	1.465 Abs [1.4570]	< 0.000 ng/mL [< 0.000]	Out(LR) [Out(LR)]	0.050 - 2.000	B03
AB09933	Cylindrospermopsin 1X	1.428 Abs	< 0.000 ng/mL	Out(LR)	0.050 - 2.000	C03
AB09933	Cylindrospermopsin 1X	1.503 Abs [1.4655]	< 0.000 ng/mL [< 0.000]	Out(LR) [Out(LR)]	0.050 - 2.000	D03
AB09935	Cylindrospermopsin 1X	1.479 Abs	< 0.000 ng/mL	Out(LR)	0.050 - 2.000	E03
AB09935	Cylindrospermopsin 1X	1.503 Abs [1.4910]	< 0.000 ng/mL [< 0.000]	Out(LR) [Out(LR)]	0.050 - 2.000	F03
AB09931 S	Cylindrospermopsin 1X	1.437 Abs	< 0.000 ng/mL	Out(LR)	0.050 - 2.000	G03
AB09931 S	Cylindrospermopsin 1X	1.443 Abs [1.4400]	< 0.000 ng/mL [< 0.000]	Out(LR) [Out(LR)]	0.050 - 2.000	H03
AB09936 FD	Cylindrospermopsin 1X	1.457 Abs	< 0.000 ng/mL	Out(LR)	0.050 - 2.000	A04
AB09936 FD	Cylindrospermopsin 1X	1.559 Abs [1.5080]	< 0.000 ng/mL [< 0.000]	Out(LR) [Out(LR)]	0.050 - 2.000	B04
AB09930 FB	Cylindrospermopsin 1X	1.522 Abs	< 0.000 ng/mL	Out(LR)	0.050 - 2.000	C04
AB09930 FB	Cylindrospermopsin 1X	1.576 Abs [1.5490]	< 0.000 ng/mL [< 0.000]	Out(LR) [Out(LR)]	0.050 - 2.000	D04
20120827LB	Cylindrospermopsin 1X	1.620 Abs	< 0.000 ng/mL	Out(LR)	0.050 - 2.000	E04
20120827LB	Cylindrospermopsin 1X	1.611 Abs [1.6155]	< 0.000 ng/mL [< 0.000]	Out(LR) [Out(LR)]	0.050 - 2.000	F04
AB09927	Cylindrospermopsin 1X	1.543 Abs	< 0.000 ng/mL	Out(LR)	0.050 - 2.000	G04
AB09927	Cylindrospermopsin 1X	1.544 Abs [1.5435]	< 0.000 ng/mL [< 0.000]	Out(LR) [Out(LR)]	0.050 - 2.000	H04
AB09926	Cylindrospermopsin 1X	1.445 Abs	< 0.000 ng/mL	Out(LR)	0.050 - 2.000	A05
AB09926	Cylindrospermopsin 1X	1.581 Abs [1.5130]	< 0.000 ng/mL [< 0.000]	Out(LR) [Out(LR)]	0.050 - 2.000	B05
AB09928	Cylindrospermopsin 1X	1.580 Abs	< 0.000 ng/mL	Out(LR)	0.050 - 2.000	C05
AB09928	Cylindrospermopsin 1X	1.537 Abs [1.5585]	< 0.000 ng/mL [< 0.000]	Out(LR) [Out(LR)]	0.050 - 2.000	D05
AB09924	Cylindrospermopsin 1X	1.673 Abs	< 0.000 ng/mL	Out(LR)	0.050 - 2.000	E05
AB09924	Cylindrospermopsin 1X	1.735 Abs [1.7040]	< 0.000 ng/mL [< 0.000]	Out(LR) [Out(LR)]	0.050 - 2.000	F05
AB09926LD	Cylindrospermopsin 1X	1.609 Abs	< 0.000 ng/mL	Out(LR)	0.050 - 2.000	G05
AB09926LD	Cylindrospermopsin 1X	1.632 Abs [1.6205]	< 0.000 ng/mL [< 0.000]	Out(LR) [Out(LR)]	0.050 - 2.000	H05
AB09920	Cylindrospermopsin 1X	1.534 Abs	< 0.000 ng/mL	Out(LR)	0.050 - 2.000	A06
AB09920	Cylindrospermopsin 1X	1.665 Abs [1.5995]	< 0.000 ng/mL [< 0.000]	Out(LR) [Out(LR)]	0.050 - 2.000	B06
AB09921	Cylindrospermopsin 1X	1.618 Abs	< 0.000 ng/mL	Out(LR)	0.050 - 2.000	C06
AB09921	Cylindrospermopsin 1X	1.693 Abs [1.6555]	< 0.000 ng/mL [< 0.000]	Out(LR) [Out(LR)]	0.050 - 2.000	D06
AB09922	Cylindrospermopsin 1X	1.605 Abs	< 0.000 ng/mL	Out(LR)	0.050 - 2.000	E06
AB09922	Cylindrospermopsin 1X	1.657 Abs [1.6310]	< 0.000 ng/mL [< 0.000]	Out(LR) [Out(LR)]	0.050 - 2.000	F06
AB09923	Cylindrospermopsin 1X	1.623 Abs	< 0.000 ng/mL	Out(LR)	0.050 - 2.000	G06
AB09923	Cylindrospermopsin 1X	1.689 Abs [1.6560]	< 0.000 ng/mL [< 0.000]	Out(LR) [Out(LR)]	0.050 - 2.000	H06

Notes

Signature

by 30, 2012
K. J. W. K.



Test Report

Test Information

Name/ID	Assay	Absorbance	Concentration	Interpretation	Reference	Position
AB09918	Cylindrospermopsin 1X	1.668 Abs	< 0.000 ng/mL	Out(LR)	0.050 - 2.000	A07
AB09918	Cylindrospermopsin 1X	1.700 Abs [1.6840]	< 0.000 ng/mL [< 0.000]	Out(LR) [Out(LR)]	0.050 - 2.000	B07
AB09919 <i>FB</i>	Cylindrospermopsin 1X	1.604 Abs	< 0.000 ng/mL	Out(LR)	0.050 - 2.000	C07
AB09919 <i>FB</i>	Cylindrospermopsin 1X	1.663 Abs [1.6335]	< 0.000 ng/mL [< 0.000]	Out(LR) [Out(LR)]	0.050 - 2.000	D07
Lab Blank	Cylindrospermopsin 1X	1.643 Abs	< 0.000 ng/mL	Out(LR)	0.050 - 2.000	E07
Lab Blank	Cylindrospermopsin 1X	1.622 Abs [1.6325]	< 0.000 ng/mL [< 0.000]	Out(LR) [Out(LR)]	0.050 - 2.000	F07
Lab Duplicate	Cylindrospermopsin 1X	1.613 Abs	< 0.000 ng/mL	Out(LR)	0.050 - 2.000	G07
Lab Duplicate	Cylindrospermopsin 1X	1.614 Abs [1.6135]	< 0.000 ng/mL [< 0.000]	Out(LR) [Out(LR)]	0.050 - 2.000	H07

Notes

Signature

Aug 30, 12
[Signature]



Cylindrospermopsin 1X ELISA Summary Report

Office of Water Quality - Watershed Assessment and Planning Branch

Sample #	Location	Date Collected	Date Analyzed	Conc. (ppb)
AB09934	Worster Lake (Potato Creek)	8/27/2012	8/29/2012	< 0.050
AB09933	Mississinewa	8/27/2012	8/29/2012	< 0.050
AB09935	Long Lake	8/27/2012	8/29/2012	< 0.050
AB09931	Salamonie (Lost Bridge SRA, Sample)	8/27/2012	8/29/2012	< 0.050
AB09936	Salamonie (Lost Bridge, Field Duplicate)	8/27/2012	8/29/2012	< 0.050
AB09930	Field Blank	8/27/2012	8/29/2012	< 0.050
20120827LB	Lab Blank	8/27/2012	8/29/2012	< 0.050
AB09927	Monroe (Fairfax)	8/28/2012	8/29/2012	< 0.050
AB09926	Monroe (Paynetown)	8/28/2012	8/29/2012	< 0.050
AB09928	Monroe (Harden Ridge)	8/28/2012	8/29/2012	< 0.050
AB09924	Cecil M. Harden (Raccoon SRA)	8/28/2012	8/29/2012	< 0.050
AB09926LD	Monroe (Paynetown, Lab Duplicate)	8/28/2012	8/29/2012	< 0.050
AB09920	Hardy Lake	8/28/2012	8/29/2012	< 0.050
AB09921	Whitewater Memorial	8/28/2012	8/29/2012	< 0.050
AB09922	Brookville (Quakertown)	8/28/2012	8/29/2012	< 0.050
AB09923	Brookville (Mounds)	8/28/2012	8/29/2012	< 0.050
AB09918	Whitewater Memorial (Field Duplicate)	8/28/2012	8/29/2012	< 0.050
AB09919	Field Blank	8/28/2012	8/29/2012	< 0.050
20120827LB	Lab Blank (Duplicate)	8/27/2012	8/29/2012	< 0.050
AB09926LD	Lab Duplicate (Duplicate)	8/27/2012	8/29/2012	< 0.050