



Assay Calibration Report

Assay Information

Assay Name: Cylindrospermopsin 1X Units: ng/mL
Assay Mode: 4-Parameter Logistic # of decimals: 3
Normal: 0.050 - 2.000 Assay Description:

Controls:
Normal Control

Standards:

Std1, Concentration = 0.000, Minimum number to use: 2
Std2, Concentration = 0.050, Minimum number to use: 2
Std3, Concentration = 0.100, Minimum number to use: 2
Std4, Concentration = 0.250, Minimum number to use: 2
Std5, Concentration = 0.500, Minimum number to use: 2
Std6, Concentration = 1.000, Minimum number to use: 2
Std7, Concentration = 2.000, Minimum number to use: 2

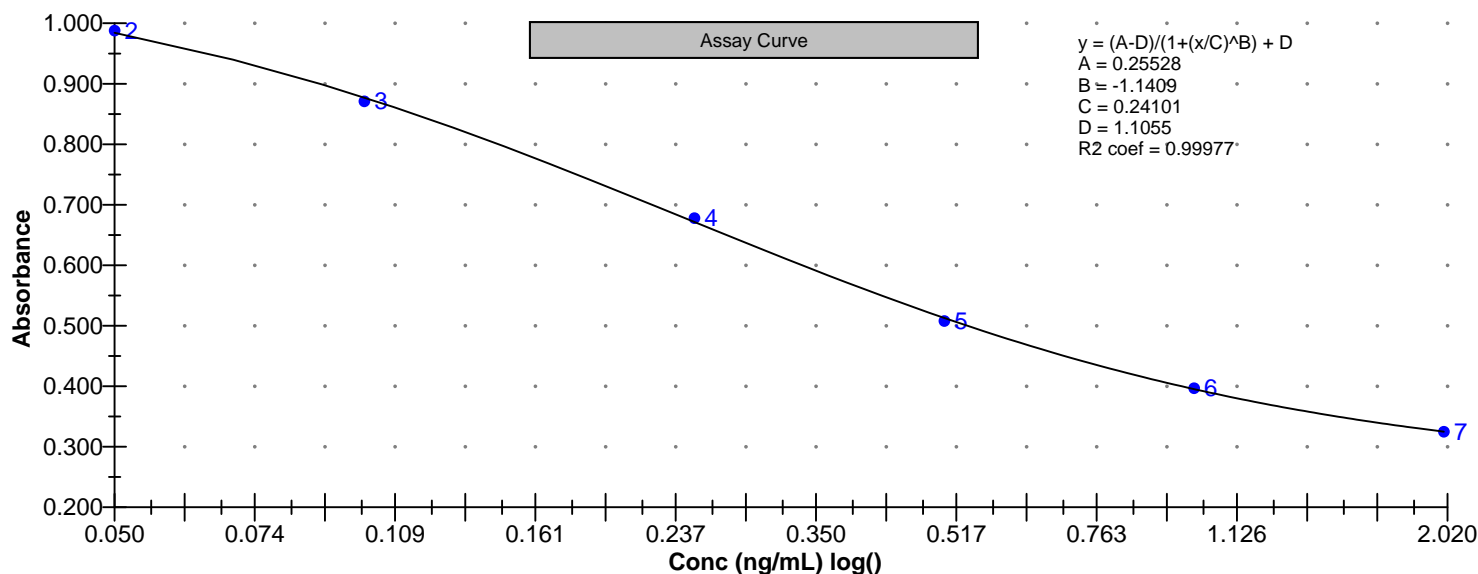
Curve valid interval: 7 days 0 hours

Axis Mode: Y = Abs, X = Log(Conc)

Assay Calibration and Statistics

Name	Absorbance	Concentration	Position
6/27/2013 11:24:01 AM			
Std1	1.131 Abs	< 0.000 ng/mL	A01
Std1	1.078 Abs	0.000 ng/mL	B01
Std2	0.989 Abs	0.048 ng/mL	C01
Std2	0.988 Abs	0.048 ng/mL	D01
Std3	0.863 Abs	0.108 ng/mL	E01
Std3	0.879 Abs	0.099 ng/mL	F01
Std4	0.671 Abs	0.251 ng/mL	G01
Std4	0.686 Abs	0.235 ng/mL	H01
Std5	0.504 Abs	0.523 ng/mL	A02
Std5	0.513 Abs	0.500 ng/mL	B02
Std6	0.401 Abs	0.960 ng/mL	C02
Std6	0.394 Abs	1.010 ng/mL	D02
Std7	0.314 Abs	> 2.000 ng/mL	E02
Std7	0.335 Abs	1.760 ng/mL	F02
6/27/2013 11:24:01 AM			
Normal Control	0.460 Abs	0.660 ng/mL	G02
Normal Control	0.474 Abs	0.611 ng/mL	H02

Name	Mean Abs	SD Abs	CV Abs	Mean Conc	SD Conc	CV Conc	Diff Conc
Std1	1.105	0.037	3.39				
Std2	0.988	0.001	0.07	0.048	0.000	0.00	-4.00
Std3	0.871	0.011	1.30	0.104	0.006	6.15	4.00
Std4	0.678	0.011	1.56	0.243	0.011	4.66	-2.80
Std5	0.508	0.006	1.25	0.512	0.016	3.18	2.40
Std6	0.397	0.005	1.25	0.985	0.035	3.59	-1.50
Std7	0.325	0.015	4.58				-100.00





Assay Calibration Report

Assay Information

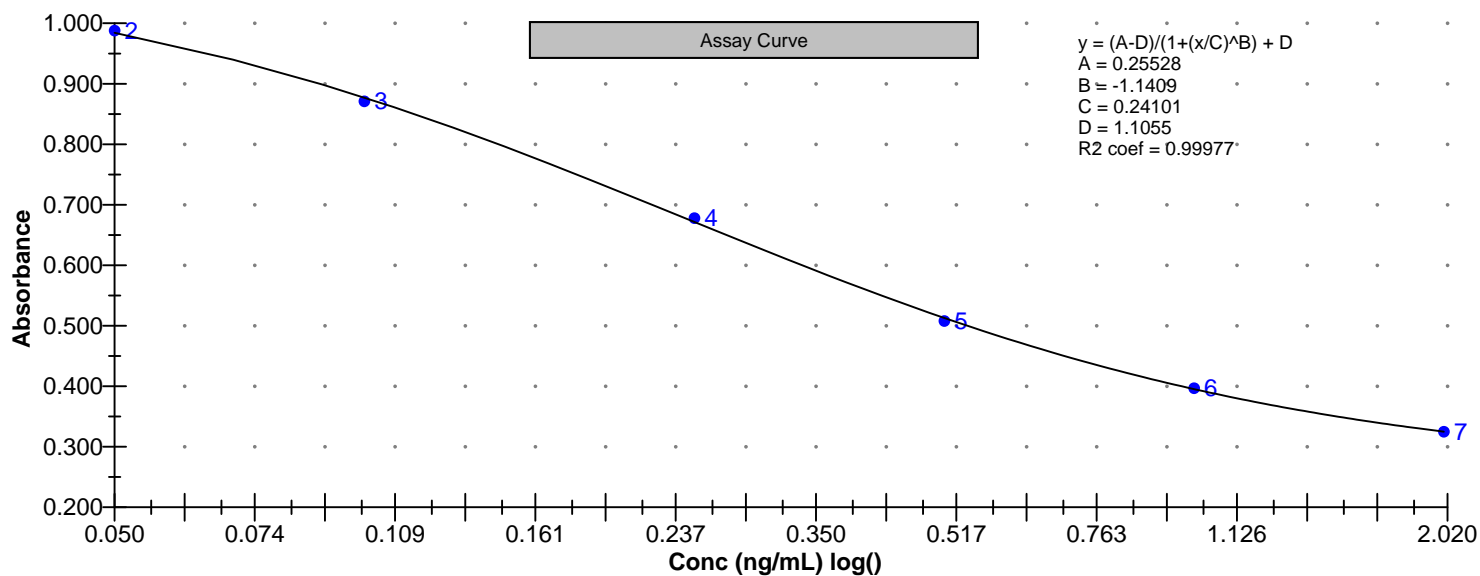
Assay Name: Cylindrospermopsin 1X Units: ng/mL
Assay Mode: 4-Parameter Logistic # of decimals: 3
Normal: 0.050 - 2.000 Assay Description:

Controls:
Normal Control

Standards:
Std1, Concentration = 0.000, Minimum number to use: 2
Std2, Concentration = 0.050, Minimum number to use: 2
Std3, Concentration = 0.100, Minimum number to use: 2
Std4, Concentration = 0.250, Minimum number to use: 2
Std5, Concentration = 0.500, Minimum number to use: 2
Std6, Concentration = 1.000, Minimum number to use: 2
Std7, Concentration = 2.000, Minimum number to use: 2
Curve valid interval: 7 days 0 hours
Axis Mode: Y = Abs, X = Log(Conc)

Assay Calibration and Statistics

Name	Mean Abs	SD Abs	CV Abs	Mean Conc	SD Conc	CV Conc	Diff Conc
Normal Control	0.467	0.010	2.12	0.636	0.035	5.45	





Test Report

Test Information

Name/ID	Assay	Absorbance	Concentration	Interpretation	Reference	Position
6/27/2013 11:24:01 AM						
Std1	Cyldrospermopsin 1X	1.131 Abs	< 0.000 ng/mL		0.000	A01
Std1	Cyldrospermopsin 1X	1.078 Abs	0.000 ng/mL		0.000	B01
Std2	Cyldrospermopsin 1X	0.989 Abs	0.048 ng/mL		0.050	C01
Std2	Cyldrospermopsin 1X	0.988 Abs	0.048 ng/mL		0.050	D01
Std3	Cyldrospermopsin 1X	0.863 Abs	0.108 ng/mL		0.100	E01
Std3	Cyldrospermopsin 1X	0.879 Abs	0.099 ng/mL		0.100	F01
Std4	Cyldrospermopsin 1X	0.671 Abs	0.251 ng/mL		0.250	G01
Std4	Cyldrospermopsin 1X	0.686 Abs	0.235 ng/mL		0.250	H01
Std5	Cyldrospermopsin 1X	0.504 Abs	0.523 ng/mL		0.500	A02
Std5	Cyldrospermopsin 1X	0.513 Abs	0.500 ng/mL		0.500	B02
Std6	Cyldrospermopsin 1X	0.401 Abs	0.960 ng/mL		1.000	C02
Std6	Cyldrospermopsin 1X	0.394 Abs	1.010 ng/mL		1.000	D02
Std7	Cyldrospermopsin 1X	0.314 Abs	> 2.000 ng/mL		2.000	E02
Std7	Cyldrospermopsin 1X	0.335 Abs	1.760 ng/mL		2.000	F02
Normal Control	Cyldrospermopsin 1X	0.460 Abs	0.660 ng/mL			G02
Normal Control	Cyldrospermopsin 1X	0.474 Abs	0.611 ng/mL			H02
AB13382	Cyldrospermopsin 1X	1.115 Abs	< 0.000 ng/mL	Out(LR)	0.050 - 2.000	A03
AB13382	Cyldrospermopsin 1X	1.109 Abs [1.1120]	< 0.000 ng/mL [< 0.000]	Out(LR) [Out(LR)]	0.050 - 2.000	B03
AB13383	Cyldrospermopsin 1X	1.131 Abs	< 0.000 ng/mL	Out(LR)	0.050 - 2.000	C03
AB13383	Cyldrospermopsin 1X	1.161 Abs [1.1460]	< 0.000 ng/mL [< 0.000]	Out(LR) [Out(LR)]	0.050 - 2.000	D03
AB13384	Cyldrospermopsin 1X	1.114 Abs	< 0.000 ng/mL	Out(LR)	0.050 - 2.000	E03
AB13384	Cyldrospermopsin 1X	1.149 Abs [1.1315]	< 0.000 ng/mL [< 0.000]	Out(LR) [Out(LR)]	0.050 - 2.000	F03
AB13385	Cyldrospermopsin 1X	1.164 Abs	< 0.000 ng/mL	Out(LR)	0.050 - 2.000	G03
AB13385	Cyldrospermopsin 1X	1.234 Abs [1.1990]	< 0.000 ng/mL [< 0.000]	Out(LR) [Out(LR)]	0.050 - 2.000	H03
AB13382LD	Cyldrospermopsin 1X	1.124 Abs	< 0.000 ng/mL	Out(LR)	0.050 - 2.000	A04
AB13382LD	Cyldrospermopsin 1X	1.124 Abs [1.1240]	< 0.000 ng/mL [< 0.000]	Out(LR) [Out(LR)]	0.050 - 2.000	B04
20130624LB	Cyldrospermopsin 1X	1.125 Abs	< 0.000 ng/mL	Out(LR)	0.050 - 2.000	C04
20130624LB	Cyldrospermopsin 1X	1.134 Abs [1.1295]	< 0.000 ng/mL [< 0.000]	Out(LR) [Out(LR)]	0.050 - 2.000	D04
AB13386	Cyldrospermopsin 1X	1.170 Abs	< 0.000 ng/mL	Out(LR)	0.050 - 2.000	E04
AB13386	Cyldrospermopsin 1X	1.246 Abs [1.2080]	< 0.000 ng/mL [< 0.000]	Out(LR) [Out(LR)]	0.050 - 2.000	F04
AB13387	Cyldrospermopsin 1X	1.220 Abs	< 0.000 ng/mL	Out(LR)	0.050 - 2.000	G04
AB13387	Cyldrospermopsin 1X	1.130 Abs [1.1750]	< 0.000 ng/mL [< 0.000]	Out(LR) [Out(LR)]	0.050 - 2.000	H04
AB13388	Cyldrospermopsin 1X	1.203 Abs	< 0.000 ng/mL	Out(LR)	0.050 - 2.000	A05
AB13388	Cyldrospermopsin 1X	1.122 Abs [1.1625]	< 0.000 ng/mL [< 0.000]	Out(LR) [Out(LR)]	0.050 - 2.000	B05
AB13390	Cyldrospermopsin 1X	1.176 Abs	< 0.000 ng/mL	Out(LR)	0.050 - 2.000	C05
AB13390	Cyldrospermopsin 1X	1.137 Abs [1.1565]	< 0.000 ng/mL [< 0.000]	Out(LR) [Out(LR)]	0.050 - 2.000	D05
AB13389	Cyldrospermopsin 1X	1.125 Abs	< 0.000 ng/mL	Out(LR)	0.050 - 2.000	E05
Name/ID	Assay	Absorbance	Concentration	Interpretation	Reference	Position
6/27/2013 11:24:02 AM						
AB13389	Cyldrospermopsin 1X	1.165 Abs	< 0.000 ng/mL	Out(LR)	0.050 - 2.000	F05

Notes

Signature

June 27, 2013



Cylindrospermopsin 1X ELISA Summary Report

Office of Water Quality - Watershed Assessment and Planning Branch

Sample #	Location	Date Collected	Date Analyzed	Conc. (ppb)
AB13382	Mississinewa Miami SRA	6/24/2013	6/27/2013	<0.050
AB13383	Potato Creek SP	6/24/2013	6/27/2013	<0.050
AB13384	Mississinewa Miami SRA Field Dup	6/24/2013	6/27/2013	<0.050
AB13385	Field Blank	6/24/2013	6/27/2013	<0.050
AB13382LD	Mississinewa Miami SRA Lab Dup	6/24/2013	6/27/2013	<0.050
20130624LB	Lab Blank	6/24/2013	6/27/2013	<0.050
AB13386	Chain O Lakes (Sand Lake)	6/25/2013	6/27/2013	<0.050
AB13387	Pokagon SP	6/25/2013	6/27/2013	<0.050
AB13388	Salamonie Lost Bridge West SRA	6/25/2013	6/27/2013	<0.050
AB13390	Pokagon SP Field Dup	6/25/2013	6/27/2013	<0.050
AB13389	Field Blank	6/25/2013	6/27/2013	<0.050