



Microcystins ELISA Summary Report

Office of Water Quality - Watershed Assessment and Planning Branch

Sample #	Location	Date Collected	Date Analyzed	Conc. (ppb)
AB33070	Raccoon Lake SRA	6/11/2018	6/12/2018	< 0.30
AB33071	Starve Hollow SRA	6/11/2018	6/12/2018	< 0.30
AB33072	Paynetown SRA	6/11/2018	6/12/2018	< 0.30
AB33073	Fairfax SRA	6/11/2018	6/12/2018	< 0.30
AB33073LD	Fairfax (Lab Duplicate)	6/11/2018	6/12/2018	< 0.30
AB33075	Field Blank	6/11/2018	6/12/2018	< 0.30
AB33076	Whitewater (Field Duplicate)	6/11/2018	6/12/2018	< 0.30
AB33077	Field Blank	6/11/2018	6/12/2018	< 0.30
AB33078	Whitewater Memorial SP	6/11/2018	6/12/2018	< 0.30
AB33079	Quakertown SRA	6/11/2018	6/12/2018	< 0.30
AB33080	Mounds SRA	6/11/2018	6/12/2018	< 0.30
AB33081	Hardy Lake SRA	6/11/2018	6/12/2018	< 0.30
AB33082	Deam Lake SRA	6/11/2018	6/12/2018	< 0.30
20180611LB	Lab Blank	6/11/2018	6/12/2018	< 0.30
AB33347	Ft Ben Harrison State Park Dog Lake	6/11/2018	6/12/2018	< 0.30



Assay Calibration Report

Assay Information

Assay Name: Microcystins ADDA Units: ng/mL
 Assay Mode: 4-Parameter Logistic Weight # of decimals: 4
 Normal: By1500e 5.0000 Assay Description:

Controls:

Normal Control

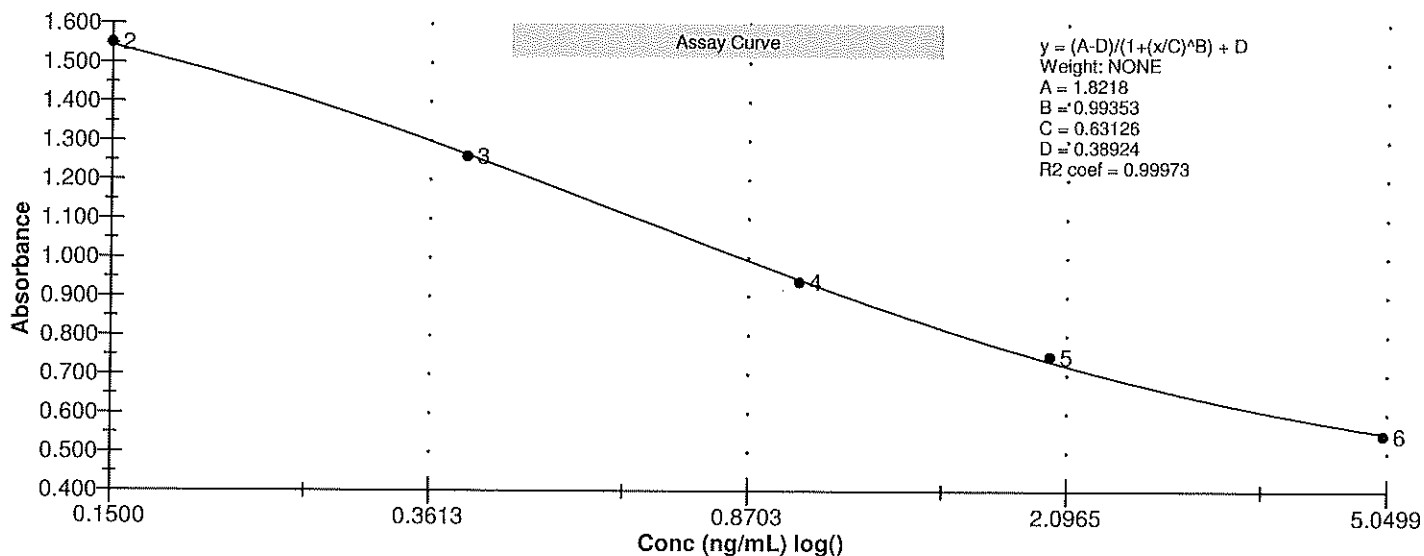
Standards:

Std1, Concentration = 0.0000, Minimum number to use: 2
 Std2, Concentration = 0.1500, Minimum number to use: 2
 Std3, Concentration = 0.4000, Minimum number to use: 2
 Std4, Concentration = 1.0000, Minimum number to use: 2
 Std5, Concentration = 2.0000, Minimum number to use: 2
 Std6, Concentration = 5.0000, Minimum number to use: 2
 Curve valid interval: 7 days 0 hours

Assay Calibration and Statistics

Name	Absorbance	Concentration	Position
6/12/2018 3:37:49 PM			
Std1	1.787 Abs	0.0154 ng/mL	A01
Std1	1.853 Abs	< 0.0000 ng/mL	B01
Std2	1.528 Abs	0.1615 ng/mL	C01
Std2	1.574 Abs	0.1307 ng/mL	D01
Std3	1.220 Abs	0.4564 ng/mL	E01
Std3	1.301 Abs	0.3593 ng/mL	F01
Std4	0.917 Abs	1.0861 ng/mL	G01
Std4	0.960 Abs	0.9558 ng/mL	H01
Std5	0.762 Abs	1.8071 ng/mL	A02
Std5	0.733 Abs	2.0145 ng/mL	B02
Std6	0.537 Abs	> 5.0000 ng/mL	C02
Std6	0.555 Abs	4.8887 ng/mL	D02
6/12/2018 3:37:49 PM			
Normal Control	1.205 Abs	0.4765 ng/mL	F02
Normal Control	1.061 Abs	0.7156 ng/mL	E02

Name	Mean Abs	SD Abs	CV Abs	Mean Conc	SD Conc	CV Conc	Diff Conc
Std1	1.820	0.047	2.56				
Std2	1.551	0.033	2.10	0.146	0.022	14.91	-2.67
Std3	1.260	0.057	4.54	0.408	0.069	16.83	2.00
Std4	0.938	0.030	3.24	1.021	0.092	9.02	2.10
Std5	0.748	0.021	2.74	1.911	0.147	7.67	-4.45
Std6	0.546	0.013	2.33				-100.00
Normal Control	1.133	0.102	8.99	0.596	0.169	28.36	





Test Report

Test Information

Name/ID	Assay	Absorbance	Concentration	Interpretation	Reference	Position
6/12/2018 3:37:49 PM						
Std1	Microcystins ADDA	1.787 Abs	0.0154 ng/mL		0.0000	A01
Std1	Microcystins ADDA	1.853 Abs	< 0.0000 ng/mL		0.0000	B01
Std2	Microcystins ADDA	1.528 Abs	0.1615 ng/mL		0.1500	C01
Std2	Microcystins ADDA	1.574 Abs	0.1307 ng/mL		0.1500	D01
Std3	Microcystins ADDA	1.220 Abs	0.4564 ng/mL		0.4000	E01
Std3	Microcystins ADDA	1.301 Abs	0.3593 ng/mL		0.4000	F01
Std4	Microcystins ADDA	0.917 Abs	1.0861 ng/mL		1.0000	G01
Std4	Microcystins ADDA	0.960 Abs	0.9558 ng/mL		1.0000	H01
Std5	Microcystins ADDA	0.762 Abs	1.8071 ng/mL		2.0000	A02
Std5	Microcystins ADDA	0.733 Abs	2.0145 ng/mL		2.0000	B02
Std6	Microcystins ADDA	0.537 Abs	> 5.0000 ng/mL		5.0000	C02
Std6	Microcystins ADDA	0.555 Abs	4.8887 ng/mL		5.0000	D02
Normal Control	Microcystins ADDA	1.061 Abs	0.7156 ng/mL			E02
Normal Control	Microcystins ADDA	1.205 Abs	0.4765 ng/mL			F02
AB33070	Microcystins ADDA	1.743 Abs	0.0361 ng/mL	LOW	0.1500 - 5.0000	G02
AB33070	Microcystins ADDA	1.790 Abs [1.7665] {1.9 C	0.0140 ng/mL [0.0248] {62.4 C	Low [Low]	0.1500 - 5.0000	H02
AB33071	Microcystins ADDA	1.818 Abs	0.0016 ng/mL	LOW	0.1500 - 5.0000	A03
AB33071	Microcystins ADDA	1.945 Abs [1.8815] {4.8 C	< 0.0000 ng/mL [< 0.0000]	Out(LR) [Out(LR)]	0.1500 - 5.0000	B03
AB33072	Microcystins ADDA	1.787 Abs	0.0154 ng/mL	LOW	0.1500 - 5.0000	C03
AB33072	Microcystins ADDA	1.806 Abs [1.7965] {0.7 C	0.0069 ng/mL [0.0111] {53.9 C	Low [Low]	0.1500 - 5.0000	D03
AB33073	Microcystins ADDA	1.913 Abs	< 0.0000 ng/mL	Out(LR)	0.1500 - 5.0000	E03
AB33073	Microcystins ADDA	1.961 Abs [1.9370] {1.8 C	< 0.0000 ng/mL [< 0.0000]	Out(LR) [Out(LR)]	0.1500 - 5.0000	F03
AB33073LD	Microcystins ADDA	1.826 Abs	< 0.0000 ng/mL	Out(LR)	0.1500 - 5.0000	G03
AB33073LD	Microcystins ADDA	1.918 Abs [1.8720] {3.5 C	< 0.0000 ng/mL [< 0.0000]	Out(LR) [Out(LR)]	0.1500 - 5.0000	H03
AB33075	Microcystins ADDA	1.753 Abs	0.0313 ng/mL	LOW	0.1500 - 5.0000	A04
AB33075	Microcystins ADDA	1.891 Abs [1.8220] {5.4 C	< 0.0000 ng/mL [< 0.0000]	Out(LR) [Out(LR)]	0.1500 - 5.0000	B04
AB33076	Microcystins ADDA	1.616 Abs	0.1047 ng/mL	LOW	0.1500 - 5.0000	C04
AB33076	Microcystins ADDA	1.656 Abs [1.6360] {1.7 C	0.0816 ng/mL [0.0929] {17.5 C	Low [Low]	0.1500 - 5.0000	D04
AB33077	Microcystins ADDA	1.865 Abs	< 0.0000 ng/mL	Out(LR)	0.1500 - 5.0000	E04
AB33077	Microcystins ADDA	1.862 Abs [1.8635] {0.1 C	< 0.0000 ng/mL [< 0.0000]	Out(LR) [Out(LR)]	0.1500 - 5.0000	F04
AB33078	Microcystins ADDA	1.674 Abs	0.0716 ng/mL	LOW	0.1500 - 5.0000	G04
AB33078	Microcystins ADDA	1.624 Abs [1.6490] {2.1 C	0.0999 ng/mL [0.0855] {23.3 C	Low [Low]	0.1500 - 5.0000	H04
AB33079	Microcystins ADDA	1.758 Abs	0.0289 ng/mL	LOW	0.1500 - 5.0000	A05
AB33079	Microcystins ADDA	1.813 Abs [1.7855] {2.2 C	0.0038 ng/mL [0.0160] {108.6 C	Low [Low]	0.1500 - 5.0000	B05
AB33080	Microcystins ADDA	1.751 Abs	0.0322 ng/mL	LOW	0.1500 - 5.0000	C05
AB33080	Microcystins ADDA	1.760 Abs [1.7555] {0.4 C	0.0279 ng/mL [0.0301] {10.1 C	Low [Low]	0.1500 - 5.0000	D05
AB33081	Microcystins ADDA	1.797 Abs	0.0109 ng/mL	LOW	0.1500 - 5.0000	E05
AB33081	Microcystins ADDA	1.813 Abs [1.8050] {0.6 C	0.0038 ng/mL [0.0073] {68.3 C	Low [Low]	0.1500 - 5.0000	F05
AB33082	Microcystins ADDA	1.861 Abs	< 0.0000 ng/mL	Out(LR)	0.1500 - 5.0000	G05
AB33082	Microcystins ADDA	1.810 Abs [1.8355] {2.0 C	0.0051 ng/mL [< 0.0000]	Low [Out(LR)]	0.1500 - 5.0000	H05
20180611LB	Microcystins ADDA	1.949 Abs	< 0.0000 ng/mL	Out(LR)	0.1500 - 5.0000	A06
20180611LB	Microcystins ADDA	1.933 Abs [1.9410] {0.6 C	< 0.0000 ng/mL [< 0.0000]	Out(LR) [Out(LR)]	0.1500 - 5.0000	B06
AB33347	Microcystins ADDA	1.820 Abs	0.0008 ng/mL	LOW	0.1500 - 5.0000	C06
AB33347	Microcystins ADDA	1.816 Abs [1.8180] {0.2 C	0.0025 ng/mL [0.0016] {72.9 C	Low [Low]	0.1500 - 5.0000	D06

The data in this report is preliminary without a quality control report. This data is not warranted for accuracy or other purposes.

Laboratory Analyst Signature

6/13/18
Date