



How To Develop an Emergency Plan

Brian Smith

On-Scene Coordinator

Office of Land Quality, Emergency Response Section

Indiana Department of Environmental Management

Tools To Help Write Your Plans

- Knowledge about your facility and equipment is the best tool to have.
- Typically, don't need to pay consultants to write your Emergency Spill Plan(s), but include all the relevant information that you know about your facility and your in-house capability in the plans.
- Keep the plans simple and straight forward.
- Use common sense.



[This Photo](#) by Unknown Author is licensed under [CC BY-SA](#)

Maintain and Update Fixed Facility and Transportation Emergency Response Plans



Why Should I Have an Emergency Plan?

- Depending on your agricultural operation/business, regulatory agencies may require it (e.g., IDEM, OISC, IERC, and US EPA).
- An actual spill or release from your operation may trigger other regulations that require you to mitigate and document how you addressed the spill/release.
- An emergency response plan will save you money and lessen the impact to the environment, people, and other businesses in the event of a spill or release.
- Demonstrates to communities that when ag-related spills or releases, the ag community takes appropriate actions, which lessens the calls for additional regulations.

Identify Receptors in Your Plans

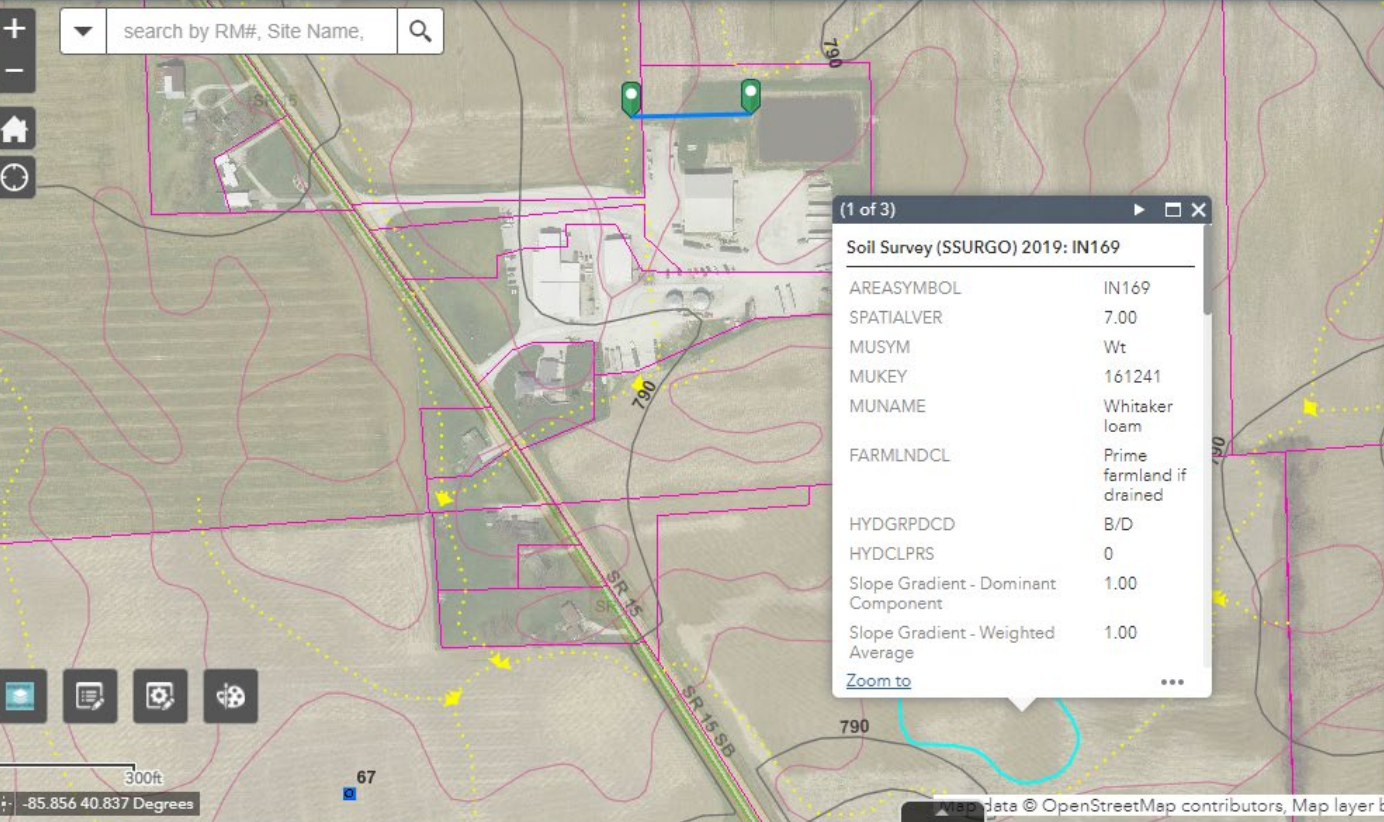
- Drainage ditches, swales, creeks and rivers.
- Drainage tiles.
- Drainage tile risers.
- Drainage tile blowouts.
- Perimeter drains (caution setting ASTs adjacent buildings).
- Storm drains and storm sewer catch basins.
- Drinking water wells.
- Rodent burrows (can lead to drainage tiles).
- Cracked soil (work the ground prior to a land application).
- Sink holes.
- Downwind homes and businesses.



IDEM EMERGENCY RESPONSE - SPECS

Spills & Potential Environmental Concern Sites

search by RM#, Site Name, [Search Icon]



(1 of 3)

Soil Survey (SSURGO) 2019: IN169

| | |
|-------------------------------------|---------------------------|
| AREASYMBOL | IN169 |
| SPATIALVER | 7.00 |
| MUSYM | Wt |
| MUKEY | 161241 |
| MUNAME | Whitaker loam |
| FARMLNDCL | Prime farmland if drained |
| HYDGRPCDC | B/D |
| HYDCLPRS | 0 |
| Slope Gradient - Dominant Component | 1.00 |
| Slope Gradient - Weighted Average | 1.00 |

[Zoom to](#)

- Layer List**
- Elevation_Contours_24k_USGS
 - IDEM OSC County Coverage
 - IDEM_Offices_Regional_Service_Areas
 - IDEM Regional Offices
 - Anhydrous Ammonia Facilities (OISC)
 - Soil Survey (SSURGO) 2019
 - DNR - Boat Launch (Public)
 - DNR_Districts - DNR Law Enforcement Districts
 - Energy_Pipelines - Oil & Gas (as of 1988) - PUBLIC (SKEWED)
 - 24hrSpillContractors
 - Dry_Cleaner_Laundry - Dry Cleaner and Laundry Locations
 - River/Stream Miles
 - Surface Water Flow Direction



Phone Numbers For Your Plans

- IDEM spill line: 888-233-7745 (this is also the IERC phone number).
- National Response Center (NRC): 800-424-8802.
- Indiana 811 (request emergency locates).
- Downstream water users.
- Drinking water utility companies if located in delineated wellhead protection area and/or if a surface water intake is threatened.
- Excavation companies- dam building & interception trenches.
- Contractors who have various pumps, hoses, reels, etc.
- Spill contractors (best to already have established relationships).
- Neighboring property owners and friends.
- Ag chemical supplier after-hour emergency numbers.
- Emergency after-hour contact numbers for any resource listed in your plan.

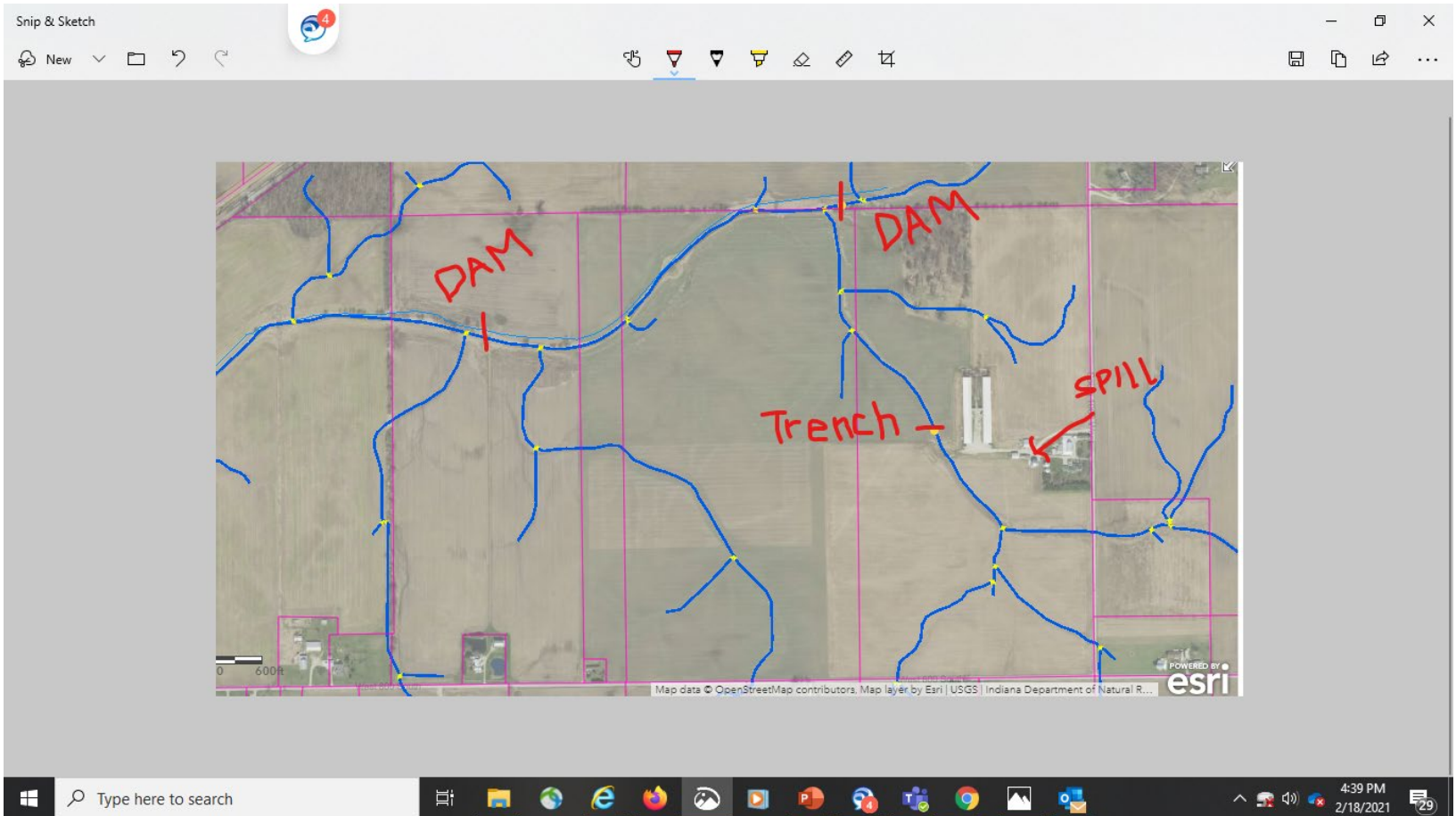
Tile Interception Trench or Recovery Sump



Earthen Containment Dam



Plan Containment Dam Locations



The screenshot shows a Snip & Sketch application window. The main content is a map with several blue lines representing waterways. Handwritten red annotations include the word "DAM" in three locations, "Trench" in the center, and "SPILL" on the right side with an arrow pointing to a specific location. The map interface includes a toolbar at the top with various drawing tools and a search bar. The bottom of the screenshot shows the Windows taskbar with the search bar and several application icons. The system tray in the bottom right corner displays the time as 4:39 PM on 2/18/2021 and a notification icon with the number 29.

Most Recovered Ag-Spill Material Is Handled as Product

Product-regulated by OISC:

- IDEM and OISC work together and usually allow the ag chemical impacted media to be land applied per the product label.
- The product label is the law.

Waste-regulated by IDEM:

- When recovered ag chemicals can't be applied per the products labels, it is considered a waste and must be disposed of correctly.
- Example: corn and soybean herbicide combination.
- Petroleum spills.

Celebrating Thirty-Five Years of Protecting Hoosiers and Our Environment

Underflow Dam for Petroleum Spills



Underflow Dam



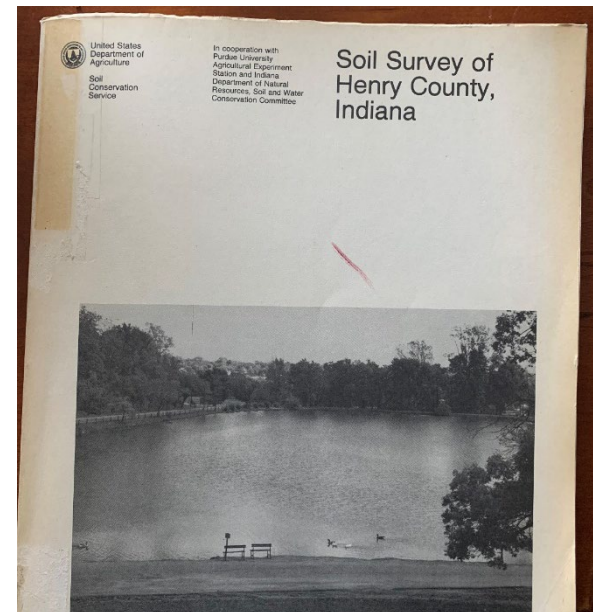
Drainage Tile Replacement



Celebrating Thirty-Five Years of Protecting Hoosiers and Our Environment

Old School Tools

- Receive verbal permission to access neighboring properties in advance of an emergency.
- Walk the facility during significant rain events and see where runoff goes.
- Soil survey books.
- Topo maps.
- Tracer dye use to determine tile outfalls.
- Aerial photos.
- Phone numbers.
- Maintain drawings of drainage maps, tiles and access roads.
- Co-op/supplier risk coordinators.





New School Tools

- Maintain as-is drawings of drainage maps, tile locations, and access roads; institutional knowledge.
- Tracer dye to determine drainage tile outfall locations.
- Internet.
- GIS layered maps.
 - Parcel owners, surface drainage flow directions, topo map overlays, soil survey description overlays, measuring tool, current aerial imagery, surface ditch, creek, stream, and river overlays.
- Smart phones and 24/7 telephone numbers to call for help.
- Printout maps showing receptors and planned containment dam locations.
- Co-op a/o ag supplier risk coordinators and consultants.

Secondary Containment Failure





Maintain List of Routine Deposable Materials

- Visqueen sheet plastic- heavy mil, and/or tarps.
- Floor dry (good to have a pallet of absorbents).
- Access to dam building soil (e.g., clay/glacial till).
- Sandbags.
 - Fill sandbags < $\frac{3}{4}$ full for dams.
- Access to sand.
- Can of expandable foam.
- Drum liners or heavy mil trash bags.
- Straw bails.
- Petroleum boom and absorbent pads.

Worst Case Scenarios

- Plan for the worst.
- Play devil's advocate.
- Plan for tornados, flooding, vandals, and disgruntled employees.
- Plan for spill events to occur at any time (e.g., weddings, school graduations, state fairs, holidays, or vacation).
- Confirm emergency contacts and phone numbers annually.
- Have electronic copies of plans that are accessible anywhere.

Agriculture Chemical Spill Contractors

- List multiple contractors with 24/7 emergency contact numbers in your emergency plans.
- Research contractors to confirm the services they offer.
- Call in favors from friends and neighbors when a spill occurs; let them know IDEM is involved.





IDEM Spill Contractors Website

<https://www.in.gov/idem/cleanups/2451.htm>

Information about novel coronavirus (COVID-19)
Get the latest information about coronavirus and the Indiana Department of Health preparations here - coronavirus.in.gov

Find a Spill Contractor

Selecting an environmental spill contractor is different than selecting an environmental consultant. Spill response involves the immediate mobilization of resources to minimize threats to public health and the environment. A competent environmental spill contractor will have on-call skilled trained personnel and equipment resources for immediate deployment to assist a client with spill containment and cleanup. In addition to the spill cleanup, a competent spill contractor will assist their client in navigating and fulfilling the complexity of federal, state, and local regulations.

IDEM has assembled a map of spill contractors servicing Indiana and provides guidance on the selection of a spill contractor. Spill response contractors' skills, experience, and available equipment vary widely and so it is important to select a spill contractor who has the capability to address specific spill response needs as each spill differs in complexity. This guidance and [spill contractor map](#) should be used together to select a potential spill contractor. The spill contractor map is not all-inclusive. These tools are provided to help expedite spill response efforts and should not be taken as legal advice.

You've had a spill and need to select a spill contractor

First check and determine if your company has a spill contingency plan or other pre-planning documents which list pre-selected spill response contractors. If you have a plan, follow your plan.

If you do not have a plan or your pre-selected spill contractor is unable to provide a timely response, IDEM recommends you first discuss the incident with on-scene personnel, preferably the Incident Commander (I.C.). The IDEM On-Scene Coordinator (OSC) is also a good source of information and can be contacted 24/7 at the IDEM [spill line](#). Find out everything you can about the incident and ask what spill response equipment and resources are needed. Get an exact location of the spill so you can direct the hired spill contractor to the incident location.



Celebrating Thirty-Five Years of Protecting Hoosiers and Our Environment

IDEM Website Resources - Planning

Information about novel coronavirus (COVID-19)
Get the latest information about coronavirus and the Indiana Department of Health preparations here - coronavirus.in.gov

Additional Resource

In addition to IDEM spill reporting and cleanup requirements, facilities and modes of transportation may have additional Federal, State, and local obligations. These web links are provided to assist with identification of other reporting obligations but is not intended to be an all-inclusive listing of potential obligations.

- [National Response Center \(NRC\)](#)
- [U.S. EPA Emergency Planning & Community Right-to-Know](#)
- [Indiana Department of Homeland Security SARA Title III Reporting](#)
- [U.S EPA Consolidated List of List – EPCRA and CERCLA Report Requirements](#)

Following initial containment, spills often require remobilization to excavate contaminated soils. The excavations of these contaminated soils should be performed by qualified, bonded/insured competent contractors who comply with Federal, State, and local regulations. The following web links are provided as a tool to assist in roadway permitting and utility locates but is not intended to be an all-inclusive listing of potential permit or utility locate obligations.

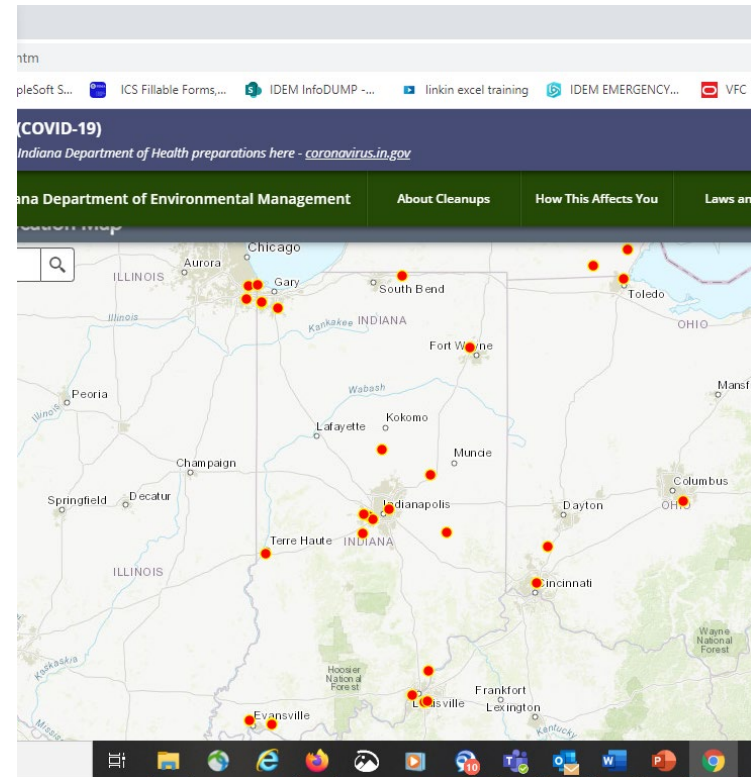
- [Indiana 811 Member Utility Locates](#)
- Indiana Department of Transportation (INDOT)
 - [Permits](#)
 - [Permit Forms](#)
 - [Manuals](#)

Contractors performing spill response are required to meet and maintain Federal and State training certifications to ensure work is performed safely.

- [Indiana Department of Labor \(IDOL\), IOSHA](#)

Transportation Emergency Plans

- Transportation emergencies are much harder to plan.
- Emergency plan may include listing several emergency spill contractors and 24/7 telephone numbers.
- Visit IDEM's spill contractor website at <https://www.in.gov/idem/cleanups/2451.htm>.







Questions?

Brian Smith, OSC

IDEM Emergency Response Program

bsmith@idem.IN.gov

Report Environmental Spills

888-233-7745