

Bulletin

Issue 2 • October 2019

for Educators

The Indiana Department of Environmental Management's (IDEM) mission is to protect the environment and human health. IDEM ensures Indiana's land is safe to live on, air is safe to breathe, and water is safe to drink. IDEM's environmental educator is a resource for you!

Featured Program

Grant Funds Available for Indiana Schools to Start or Expand Recycling

IDEM's Office of Program Support has announced the availability of grant funds from the Community Recycling Grant Program. Funding is available for expenses related to the startup or expansion of recycling, reuse, composting, or source reduction programs. The following entities are eligible to apply for funding: schools, solid waste management districts, counties, municipalities, and nonprofits located in Indiana.

Example school projects could include:

1. School recycling programs
2. Worm composting programs
3. Source reduction education projects



Eligible candidates may seek a grant starting at \$500 and going up to \$50,000. All grant applications must document a 50% match of total project costs; at least 25% must be a cash match. The remaining portion may be an in-kind match, which might include: personnel costs assigned to the project; in-house overhead; donated goods or services; contractor fees or permitting fees.

**The deadline for proposal submissions is
December 20, 2019 at 5:00 p.m. EST**

For complete guidelines and an application package visit IDEM's website at: www.Recycle.IN.gov

In This Issue:

Featured Program:
Grant Funds Available for Indiana Schools to Start or Expand Recycling

Topics to Share:
Recycle City – Online interactive game

Classroom Presentations:
Edible Landfill

Craft Corner:
Terrarium

Resources:
Recycling activities

Upcoming Events You Can Find Us At:

Statehood Day
December 11, 2019

Hoosier Association of Science Teachers, Inc.
February 11-12, 2020

Earth Day Indiana Festival
April 25, 2020

Topics to Share



The U.S. Environmental Protection Agency has an online sustainable community game called **Recycle City**. Visitors can explore Recycle City to see how its residents reduce waste, use less energy, and save money by doing simple things at home, at work, and in their neighborhoods.

In addition to exploring Recycle City, you can play games in which you'll make decisions about reducing waste and energy use. Learn about the three R's – reduce, reuse, and recycle. There are even scavenger hunts throughout Recycle City!

When you leave Recycle City, you'll know much more about the environment and what you can do to protect the environment.

Classroom Presentations



Presentation Topics:

Land Quality; Water Quality; Air Quality;
Recycling and Composting.

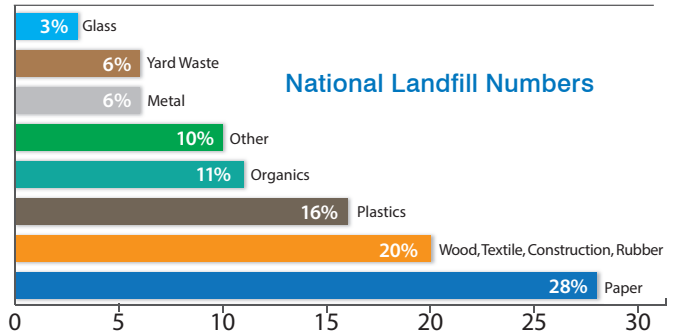
For additional program descriptions, visit:
www.idem.IN.gov/iee/

To request a presentation or a landfill poster,
contact education@idem.IN.gov

IDEM offers hands-on classroom presentations and resources throughout the year for Pre-K through high school.

Highlighted IDEM Presentation: Edible Landfill

A landfill's basic function is to isolate buried trash from the surrounding environment using a series of layers and barriers. Working as a group, students will construct the many layers of a landfill. As the landfill takes shape students will discuss what it takes to keep trash in place, how trash does not disappear once placed in a landfill, how landfills protect the environment, and what we can do to create less trash.



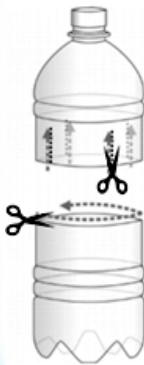
Craft Corner

Terrarium

Many classrooms keep a compost bin as a hands-on activity to learn about food waste. A fun craft for students to make using the compost is a terrarium. It is a great way for students to grow plants without the maintenance.

For this craft, you will need:

- Plastic bottle with the cap (2-liter works well)
- Small plants (ferns and moss)
- Potting soil
- Compost
- Pebbles or small stones
- Scissors



Instructions:

1. Cut bottle in two parts, starting about four inches from the bottom.
2. Add pebbles to the bottom of bottle; they act as a drainage system for water.
3. Add a few inches of potting soil.
4. Have students poke a hole in the soil with their finger.
5. Place a plant (one or two) into the hole making sure all the roots are covered.
6. Add more soil and composting material.
7. Water the plants so that the soil is wet but not soggy.
8. Slide the top of the bottle back on (with the cap on) over the bottom. If it doesn't fit, you can cut notches in both halves to attach them, or use clear packaging tape to seal.
9. Place in indirect sunlight for a classroom full of beautiful low-maintenance terrariums.
10. If you see water condensing in the terrarium, remove cap for a while, then replace cap.

Resources

IDEM's Recycle Guys page provides recycling and environmental coloring and activities pages. The pages offer a fun way to learn about the environment and how we can each protect Indiana's air, water, and land. The pages correlate with the Indiana Department of Education Academic Standards for K-2 and 3-6 grades in: English/Language Arts; Science; Social Studies; and Mathematics.

Visit IDEM's [Activities for Kids website](#) to view all the environmental coloring and activities pages.

Contact Information:

Jennifer Helrigel
Environmental Education
and Outreach Coordinator
Office of Program Support
education@idem.IN.gov



Indiana Department of
Environmental Management

EXPLORE YOUR PLAYGROUND
Environmental Quest

Glass Recycling
K-2 Grade

Hi there, I'm Dottie Bottle and I'm here to tell you all about me!

Did you know that I am made mostly from sand. People have been making glass like me for the last 4,500 years!

Glass can be recycled over and over again. There is no limit to the number of times I can be recycled. In the landfill, glass like me can take a million years to break down. When glass is recycled, it can be turned into new glass bottles, jars, tiles, marbles, fiberglass insulation and even road paving.

WORD SEARCH

Find three words in the grid:

GLASS
JARS
BOTTLES
DOTTIE
BOTTLE
RECYCLE

SGPOJTD
AQLSAAO
NHKARRT
DUIBSUT
TILESSEI
RECYCLE
SBOTTLE

Dottie Bottle

To find out where you can recycle your glass, visit me at: www.idem.IN.gov/files/swrmd/map.html