

PROJECT	DESIGNATION
TBD	TBD
CONTRACT	BRIDGE FILE
TBD	TBD

INDIANA DEPARTMENT OF TRANSPORTATION



STRUCTURE	TYPE	SPAN AND SKEW	OVER	STATION
TBD	Cont. Comp. Steel Beam	4 Spans: 75'-10", 2 @ 96'-0", 77'-0" 10° Skew Left	Lentzier Creek	6+66.00 LINE "LS-5"

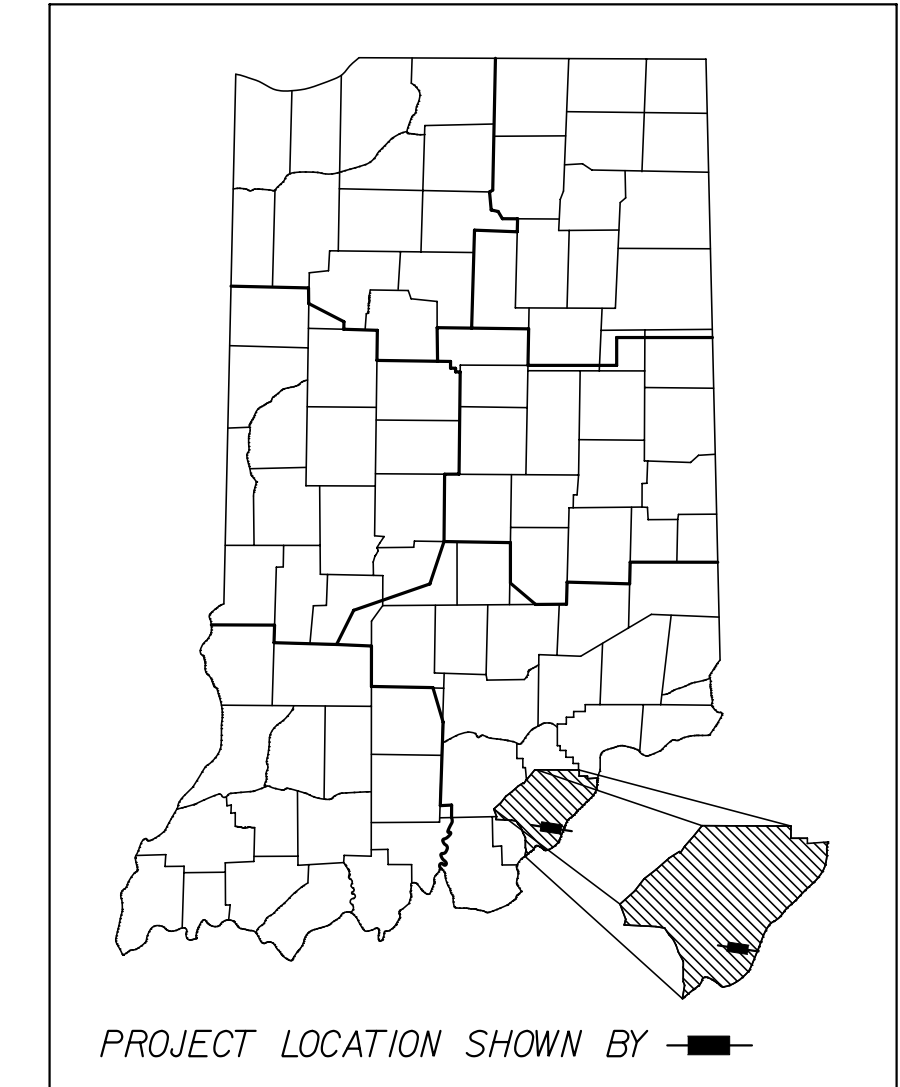
NOTE: FOR INDEX OF SHEET NO.'S AND TRAFFIC DATA SEE DWG. NO. IX-01.

BRIDGE PLANS ROUTE: BROOKHOLLOW WAY OVER LENTZIER CREEK

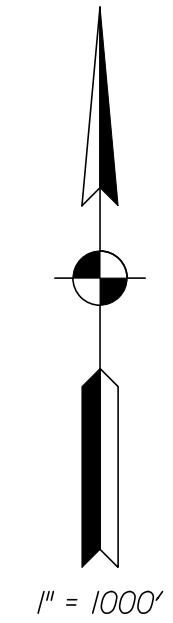
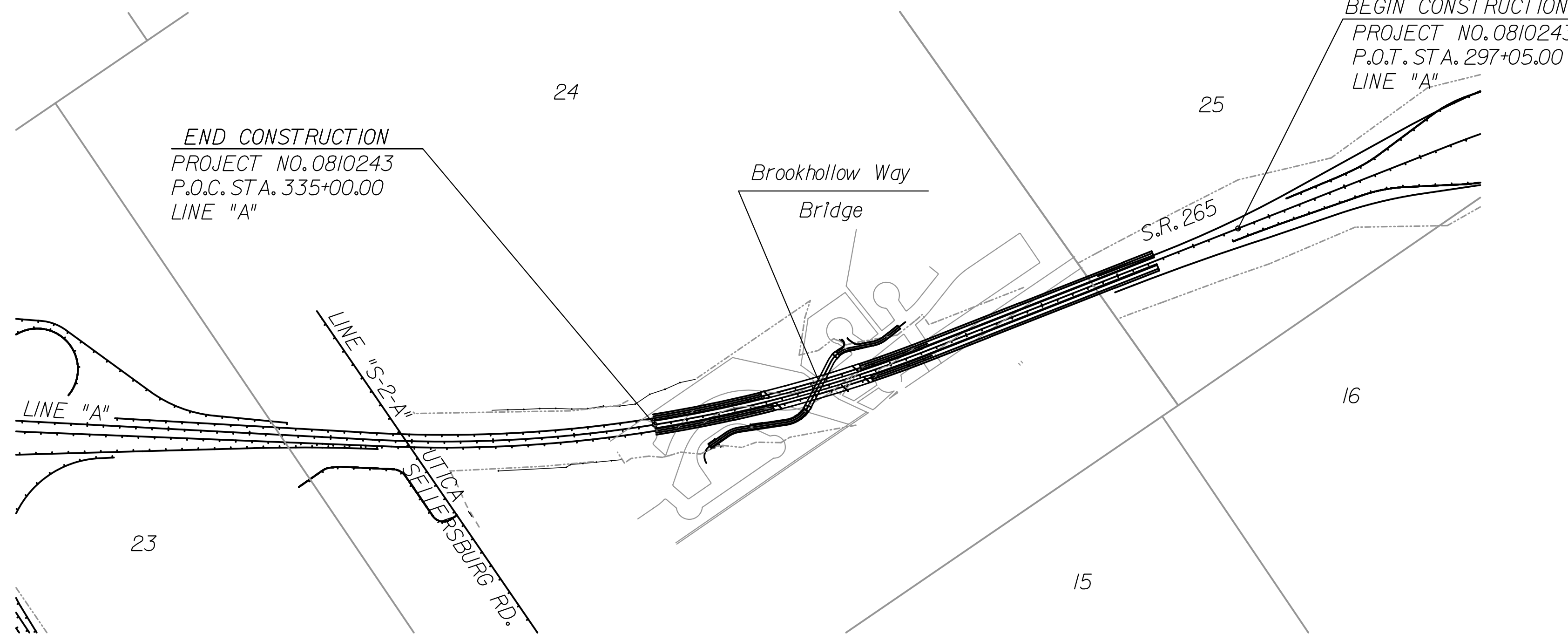
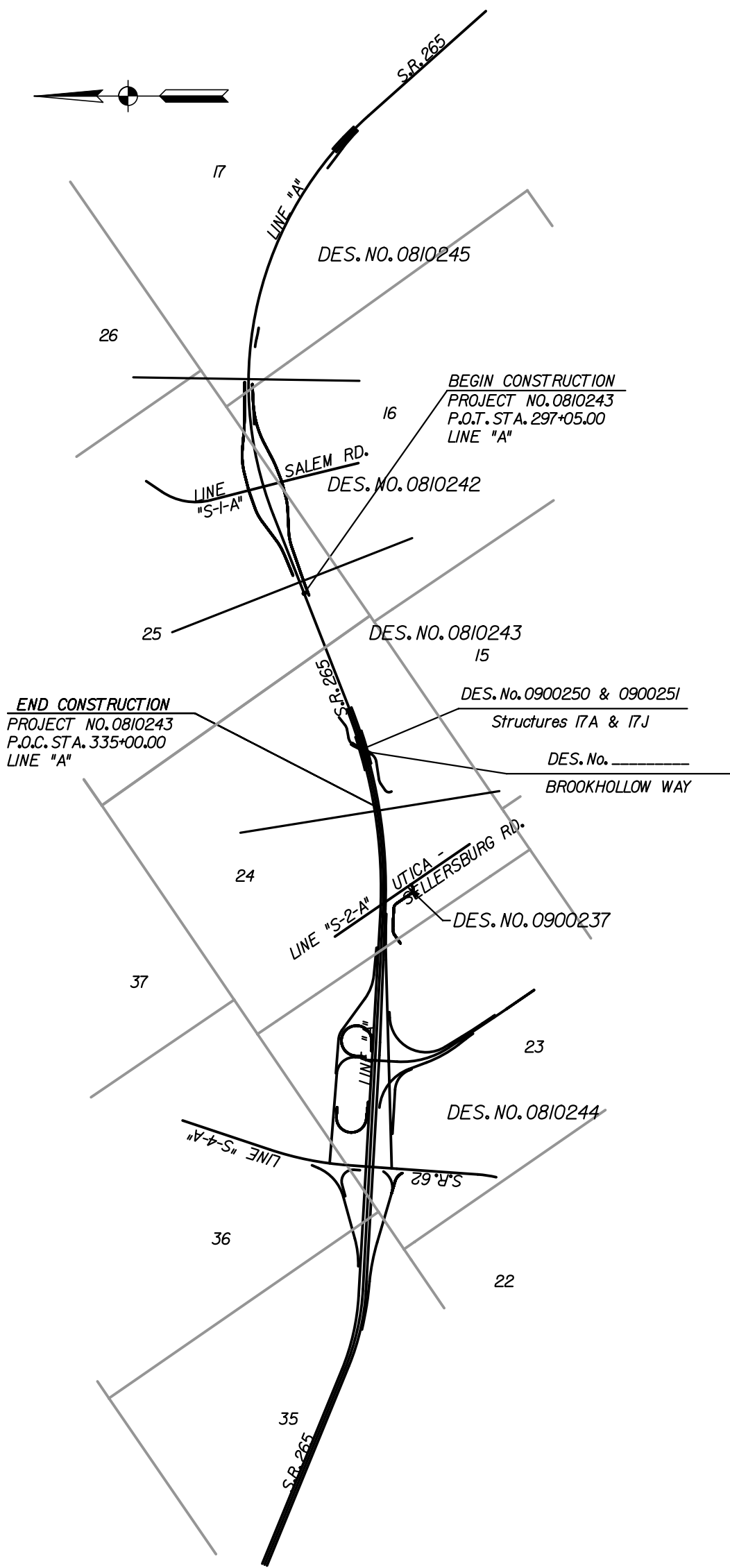
PROJECT NO. TBD P.E.
PROJECT NO. TBD R/W
PROJECT NO. TBD CONST.

NEW BRIDGE CONSTRUCTION ON BROOKHOLLOW WAY OVER LENTZIER CREEK LOCATED 1.3 MI. EAST OF S.R. 62 IN ILLINOIS GRANT SURVEY 24, UTICA TOWNSHIP, CLARK COUNTY, INDIANA

LATITUDE: 38° 20' 40" N LONGITUDE: 85° 41' 00" W HYDRAULIC UNIT CODE: 05140101



BRIDGE LENGTH: 0.066 mi.
ROADWAY LENGTH: 0.008 mi.
TOTAL LENGTH: 0.074 mi.
MAXIMUM GRADE: 1.27%



NOTE: CONTRACTOR SHALL USE THESE PLANS IN CONJUNCTION WITH ROAD PLANS DES. NO. 0810243

FINAL PLANS
DECEMBER 30, 2011

(INDIANA DEPARTMENT OF TRANSPORTATION
STANDARD SPECIFICATIONS DATED 2012
TO BE USED WITH THESE PLANS)



251 N. ILLINOIS ST.
CAPITOL CENTER SUITE 920
INDIANAPOLIS, IN 46204
PHONE (317) 237-2760
FAX (317) 237-2755

KIN DESIGNATION NUMBERS	
ROAD PLANS	
0810243	S.R. 265 SECTION C
BRIDGE PLANS	
0900252	STR. 18 - S.R. 265 OVER LENTZIER CREEK
0900253	STR. 19 - S.R. 265 OVER LENTZIER CREEK

FEDERAL HIGHWAY ADMINISTRATION
U.S. DEPT. OF TRANSPORTATION

APPROVED: _____ DATE _____

DIVISION ADMINISTRATOR

PLANS PREPARED BY: _____ NAME _____ PHONE # _____

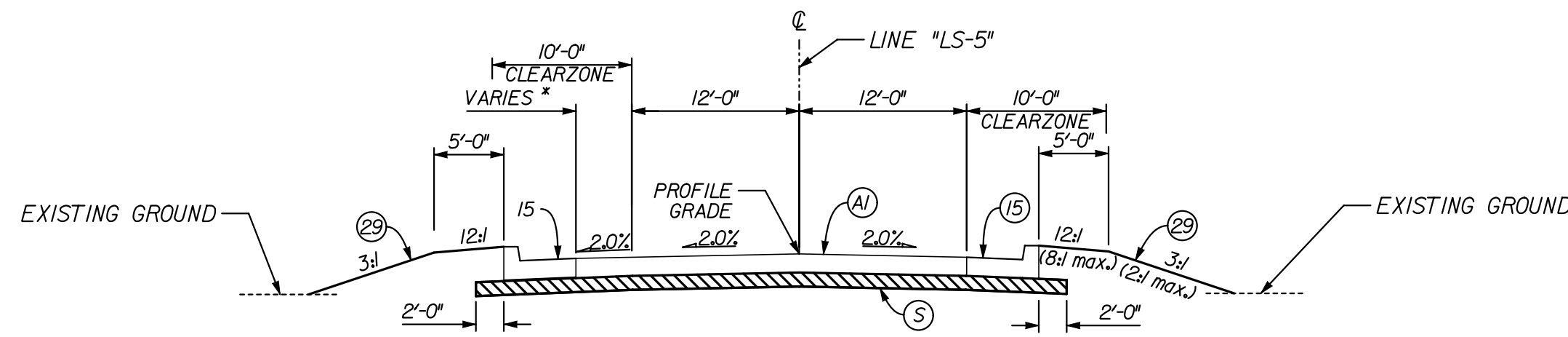
PLANS PREPARED BY: _____ COMPANY NAME _____ DATE _____

APPROVED FOR LETTING: _____ INDIANA DEPARTMENT OF TRANSPORTATION _____ DATE _____

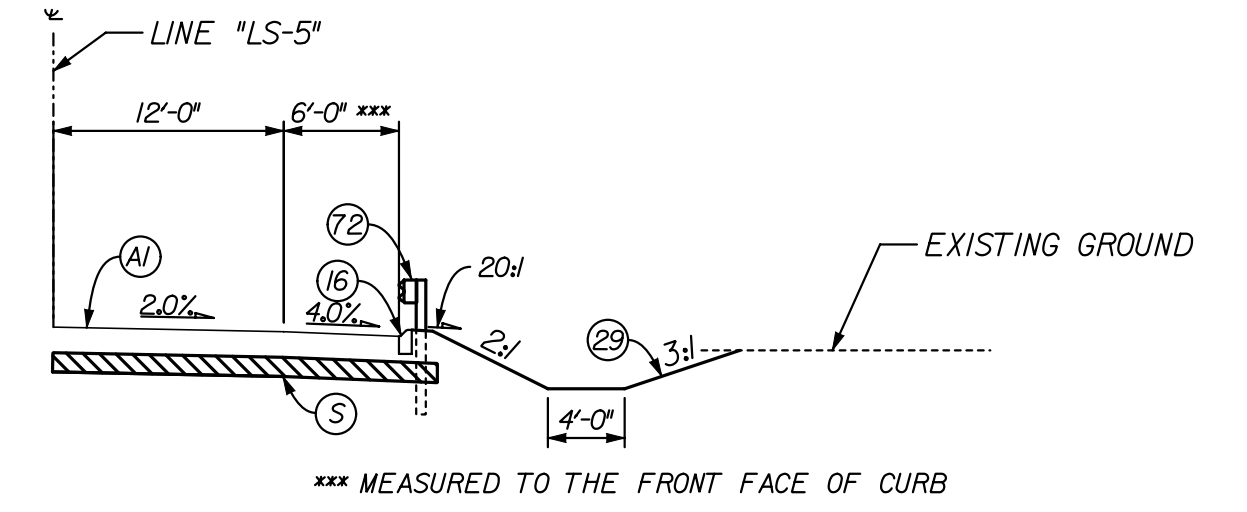
BRIDGE FILE	
Clark XX	
DESIGNATION	
TBD	
DWG. NO.	SHEET NO.
TI-01	1 of 10
CONTRACT	PROJECT
TBD	TBD

12/30/2011 8:10:07 AM C:\p01\hwh\sl\wms\2464\BHT1001.dgn

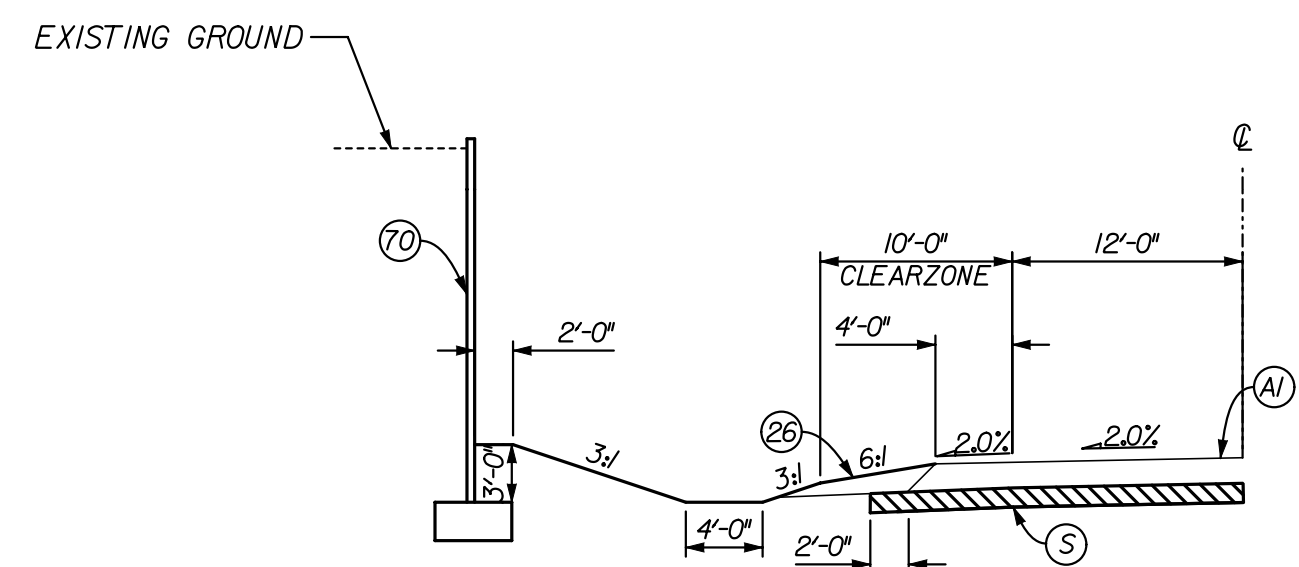
* 0' FROM STA. 0+00.00 LINE "LS-5" LT. TO STA. 2+58.35 LINE "LS-5" LT.
 VARIES FROM 0' AT STA. 2+58.35 LINE "LS-5" LT. TO 4' AT STA. 4+18.36 LINE "LS-5" LT.



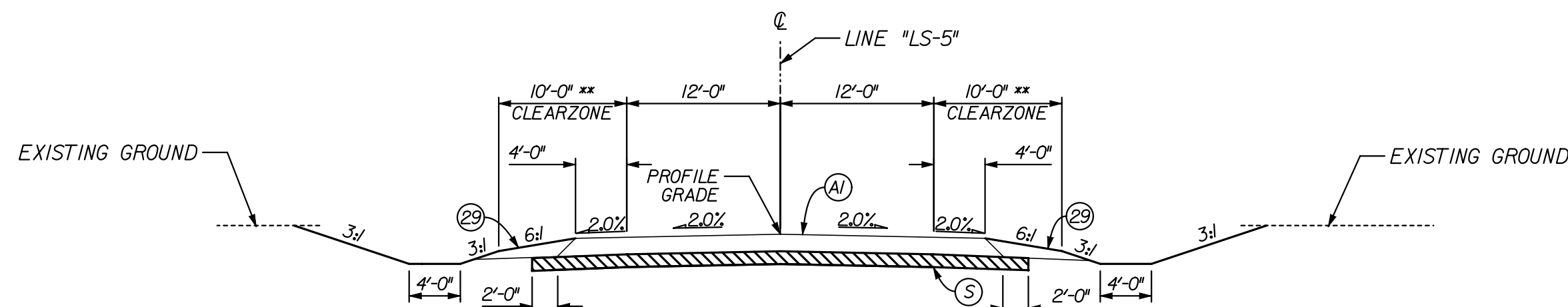
LINE "LS-5" CURB AND GUTTER
 STA. 0+50.00 LINE "LS-5" TO STA. 4+68.21 LINE "LS-5"
 PAVING EXCEPTION
 STA. 4+68.21 LINE "LS-5" TO STA. 8+67.66 LINE "LS-5"



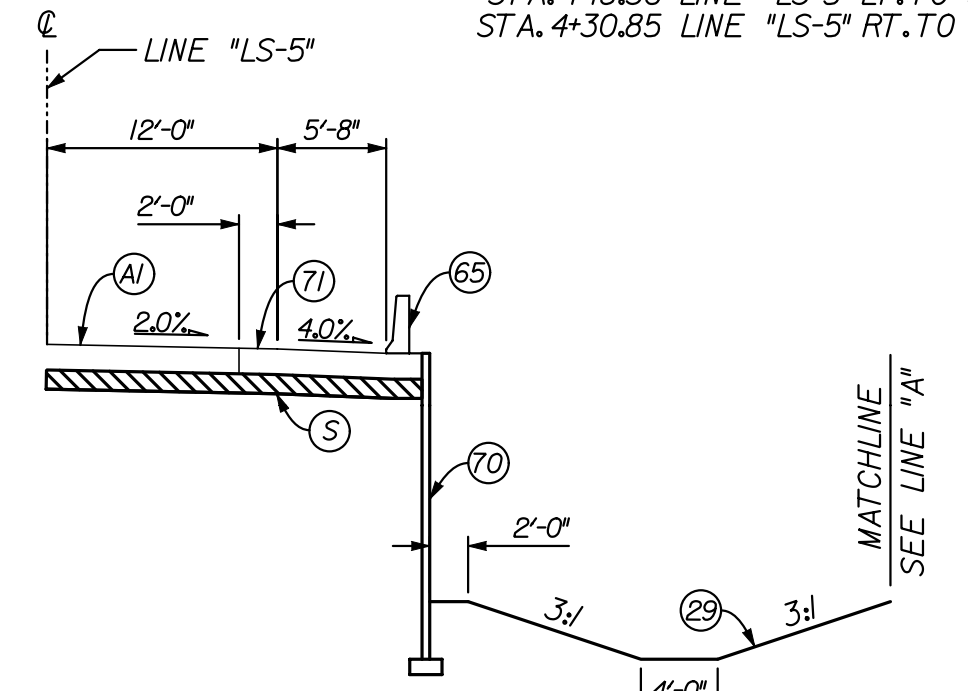
GUARDRAIL DETAIL
 STA. 4+18.36 LINE "LS-5" LT. TO STA. 4+68.21 LINE "LS-5" LT.
 STA. 4+30.85 LINE "LS-5" RT. TO STA. 4+68.21 LINE "LS-5" RT.



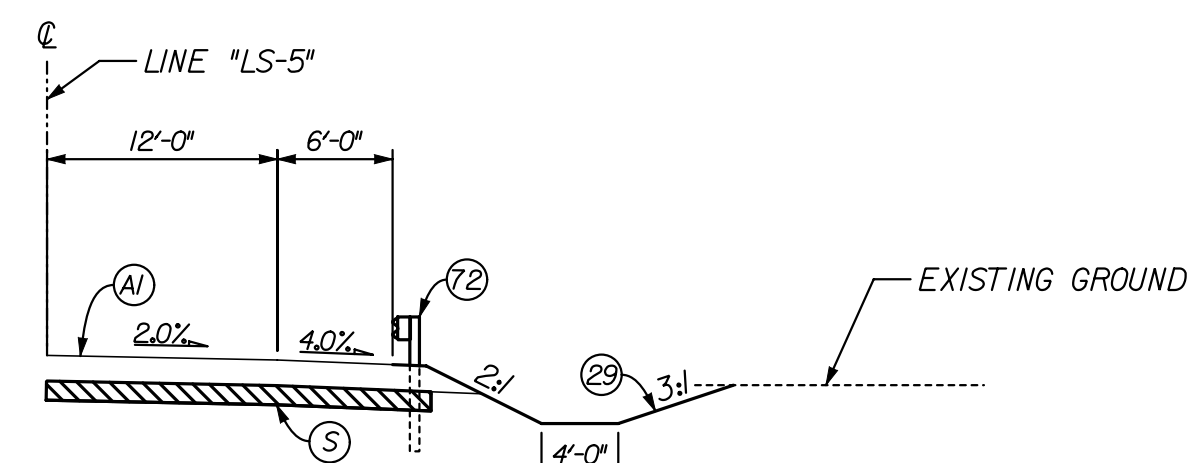
MSE WALL DETAIL
 STA. 8+82.71 LINE "LS-5" LT. TO STA. 13+75.40 LINE "LS-5" LT.



LINE "LS-5" NORMAL CROWN
 STA. 8+67.66 LINE "LS-5" TO STA. 15+19.31 LINE "LS-5"
 ** 15'-0" ON OUTSIDE OF CURVES



MSE WALL DETAIL
 STA. 12+36.54 LINE "LS-5" RT. TO STA. 14+68.73 LINE "LS-5" RT.



GUARDRAIL DETAIL
 STA. 8+67.66 LINE "LS-5" RT. TO STA. 8+98.38 LINE "LS-5" RT.
 STA. 8+67.66 LINE "LS-5" LT. TO STA. 9+17.19 LINE "LS-5" LT.
 STA. 11+62.14 LINE "LS-5" RT. TO STA. 12+36.54 LINE "LS-5" RT.

FOR INFORMATION ONLY

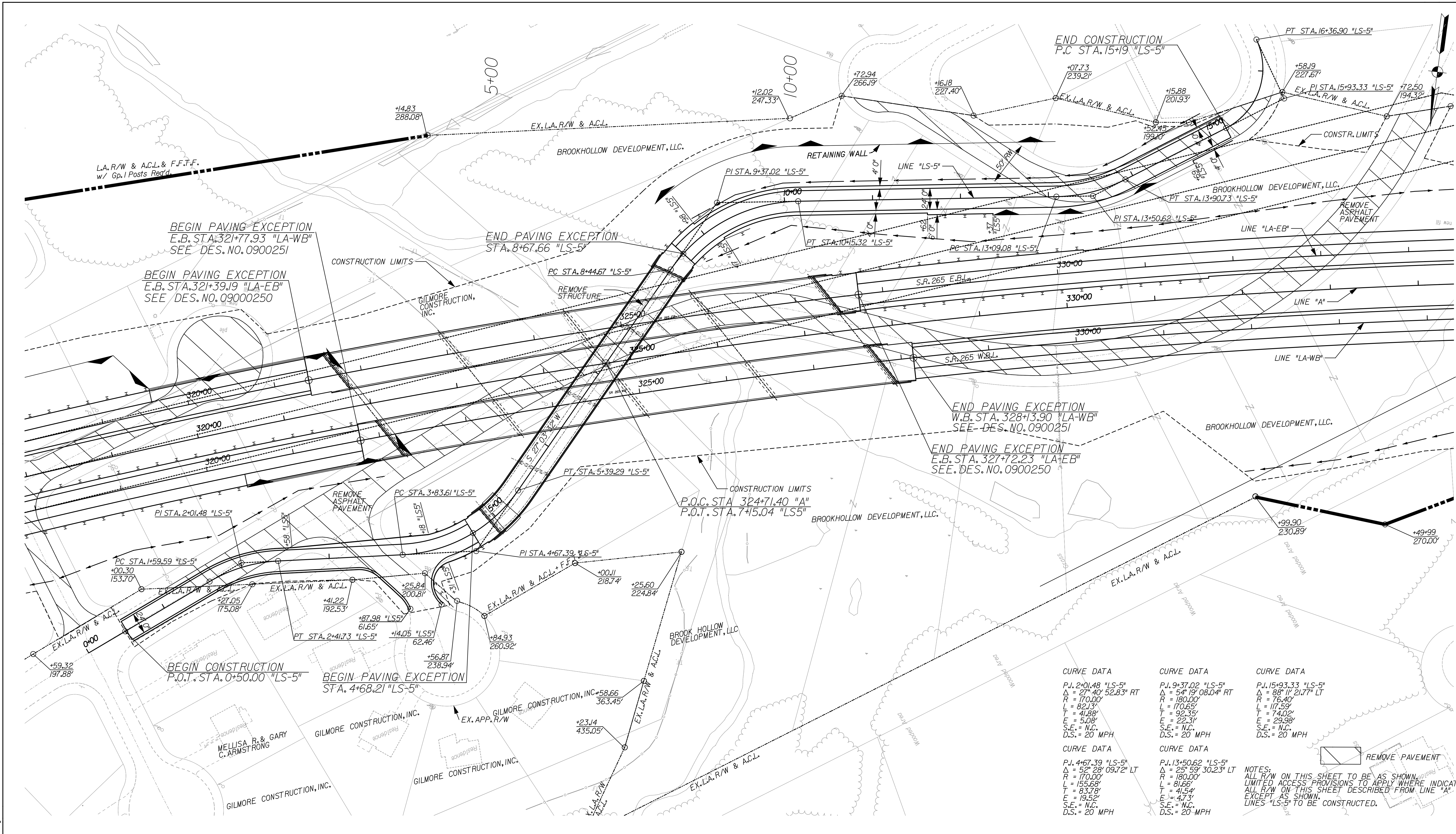
- | | | |
|--|-------------------------------|---|
| (A) XX" GC/QA PAVEMENT (TO BE DETERMINED) | (15) CONCRETE CURB AND GUTTER | (65) CONCRETE BARRIER, 45", SINGLE FACE |
| (C) VARIABLE DEPTH COMPACTED AGGREGATE, NO. 53 | (16) CONCRETE CURB, TYPE B | (70) M.S.E. RETAINING WALL |
| (S) SUBGRADE TREATMENT, TYPE xx | (26) NURSERY SODDING | (71) MOMENT SLAB |
| (U) 6" UNDERDRAIN | (29) SEEDING, R | (72) W-BEAM GUARDRAIL |

RECOMMENDED FOR APPROVAL _____	
DESIGN ENGINEER DATE	
DESIGNED: AMH	DRAWN: AMH
CHECKED: JLC	CHECKED: JLC

INDIANA
 DEPARTMENT OF TRANSPORTATION
 TYPICAL SECTIONS
 LINE "LS-5" (BROOKHOLLOW WAY)

HORIZONTAL SCALE 1" = 10'	BRIDGE FILE TBD
VERTICAL SCALE	DESIGNATION TBD
SURVEY BOOK	DWG. NO. TS-01
	SHEET NO. 3 of 10
CONTRACT TBD	PROJECT TBD

12/19/2011 2:26:30 PM
 C:\pro\tech\lsw\lms\24644\BHM\04.dgn



BEGIN PAVING EXCEPTION
 E.B. STA. 321+77.93 "LA-WB"
 SEE DES. NO. 0900251

BEGIN PAVING EXCEPTION
 E.B. STA. 321+39.19 "LA-EB"
 SEE DES. NO. 0900250

END PAVING EXCEPTION
 STA. 8+67.66 "LS-5"

END PAVING EXCEPTION
 W.B. STA. 328+13.90 "LA-WB"
 SEE DES. NO. 0900251

END PAVING EXCEPTION
 E.B. STA. 327+72.23 "LA-EB"
 SEE DES. NO. 0900250

BEGIN CONSTRUCTION
 P.O.T. STA. 0+50.00 "LS-5"

BEGIN PAVING EXCEPTION
 STA. 4+68.21 "LS-5"

CONSTRUCTION LIMITS
 P.O.C. STA. 324+71.40 "A"
 P.O.T. STA. 7+15.04 "LS5"

CURVE DATA	CURVE DATA	CURVE DATA
P.I. 2+01.48 "LS-5" Δ = 27° 40' 52.83" RT R = 170.00' L = 82.13' T = 41.88' E = 5.08' S.E. = N.C. D.S. = 20 MPH	P.I. 9+37.02 "LS-5" Δ = 54° 19' 08.04" RT R = 180.00' L = 170.65' T = 92.35' E = 22.31' S.E. = N.C. D.S. = 20 MPH	P.I. 15+93.33 "LS-5" Δ = 88° 11' 21.77" LT R = 76.40' L = 117.59' T = 74.02' E = 29.98' S.E. = N.C. D.S. = 20 MPH
P.I. 4+67.39 "LS-5" Δ = 52° 28' 09.72" LT R = 170.00' L = 155.68' T = 83.78' E = 19.52' S.E. = N.C. D.S. = 20 MPH	P.I. 13+50.62 "LS-5" Δ = 25° 59' 30.23" LT R = 180.00' L = 81.66' T = 41.54' E = 4.73' S.E. = N.C. D.S. = 20 MPH	

NOTES:
 ALL R/W ON THIS SHEET TO BE AS SHOWN.
 LIMITED ACCESS PROVISIONS TO APPLY WHERE INDICATED
 ALL R/W ON THIS SHEET DESCRIBED FROM LINE "A"
 EXCEPT AS SHOWN.
 LINES "LS-5" TO BE CONSTRUCTED.

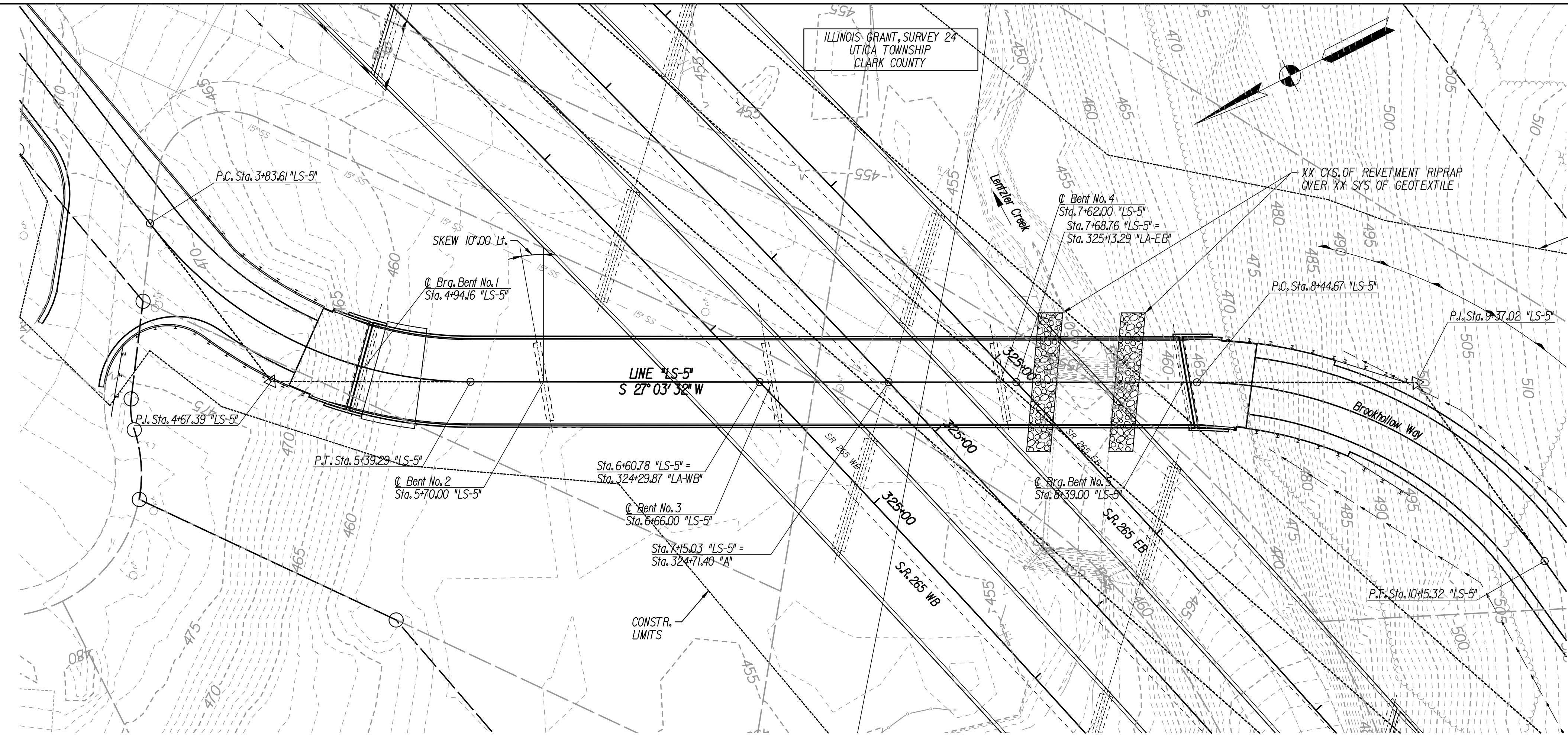
FOR INFORMATION ONLY

RECOMMENDED FOR APPROVAL	DESIGN ENGINEER	DATE
DESIGNED:	AMH	DRAWN:
CHECKED:	JLC	CHECKED:
	JLC	

INDIANA
 DEPARTMENT OF TRANSPORTATION
 PLAN SHEET
 LINE "LS-5" (BROOKHOLLOW WAY)
 STA. 0+00.00 TO STA. 15+75.00

HORIZONTAL SCALE	BRIDGE FILE
VERTICAL SCALE	DESIGNATION
SURVEY BOOK	DWG. NO.
CONTRACT	SHEET NO.
TBD	PROJECT
	TBD

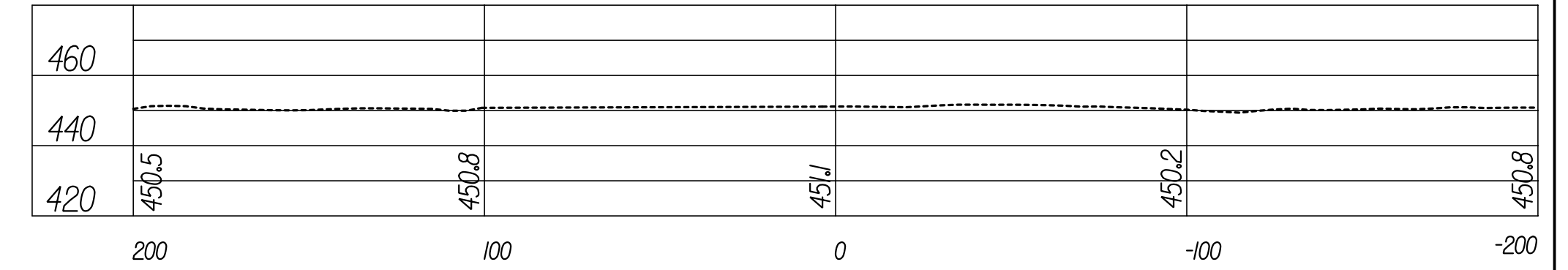
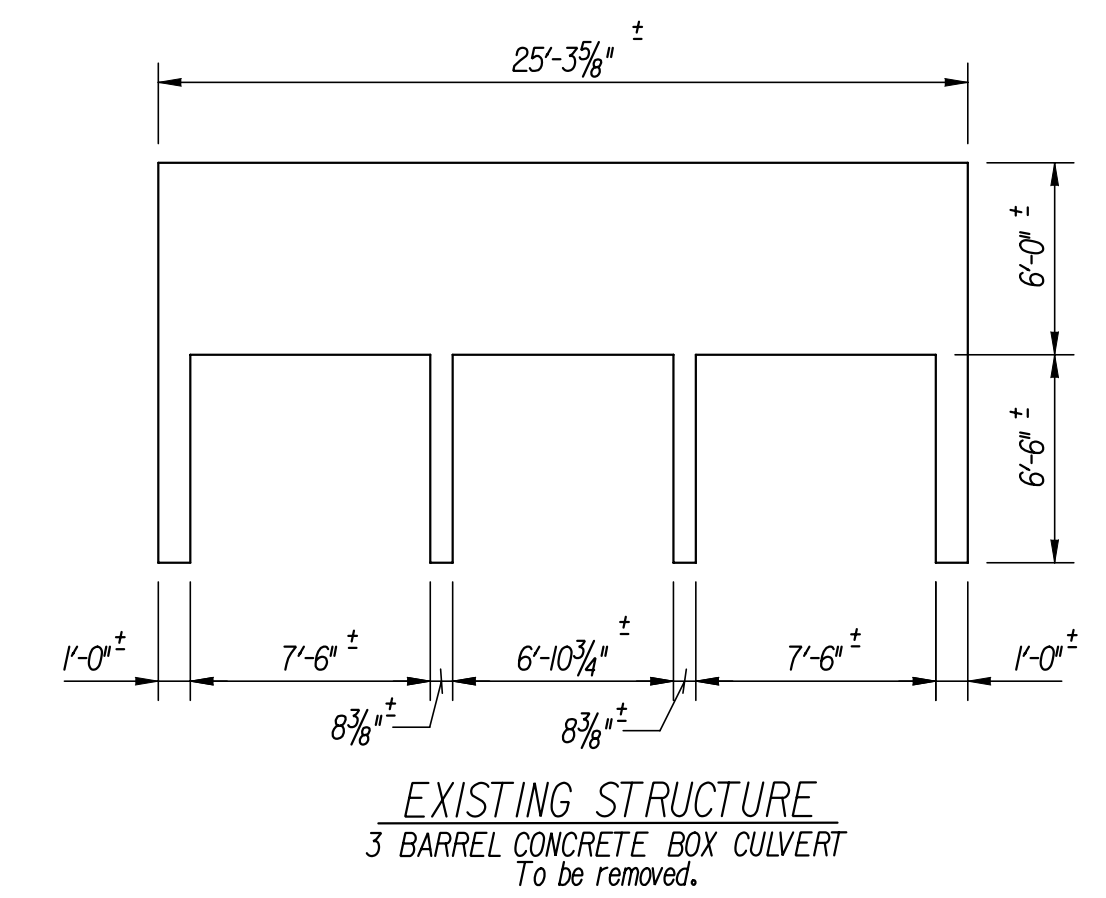
ILLINOIS GRANT, SURVEY 24
UTICA TOWNSHIP
CLARK COUNTY



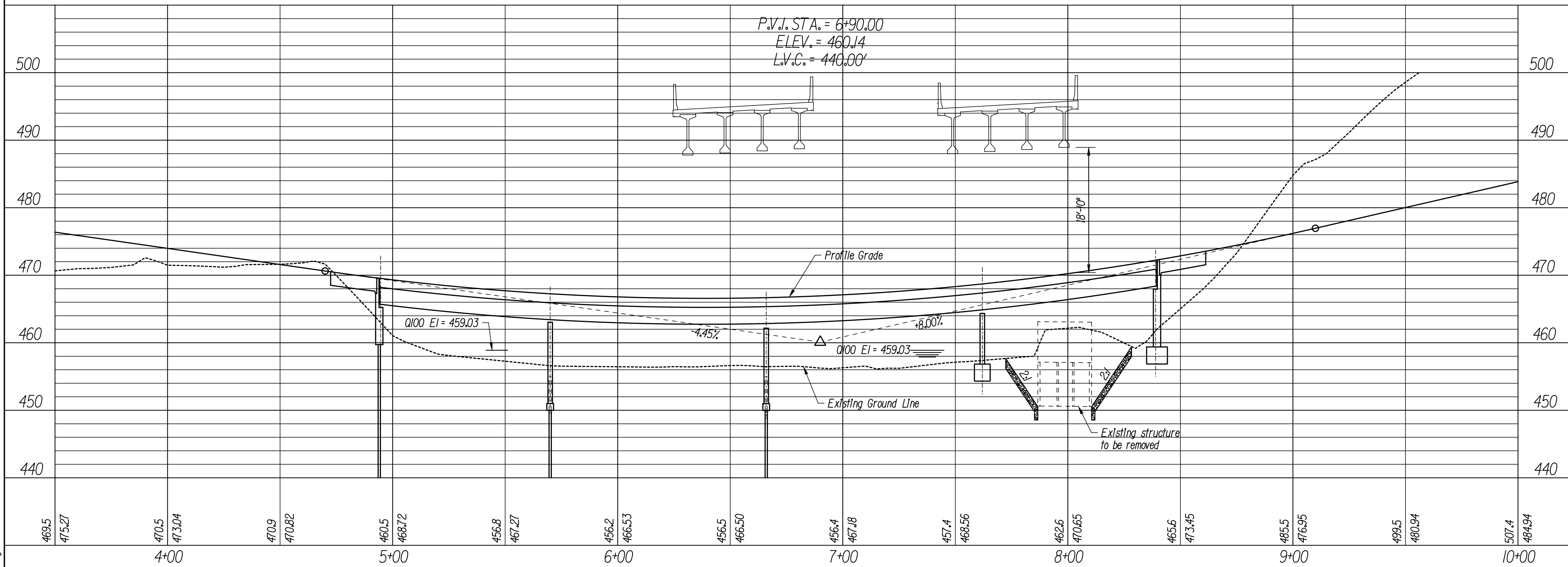
CURVE DATA
LINE "LS-5"
P.I. Sta. 4+67.39
Δ = 52°28'09.72" Left
D = 33°42'12.24"
R = 170'
T = 83.78'
L = 155.68'
E = 19.52'

CURVE DATA
LINE "LS-5"
P.I. Sta. 9+37.02
Δ = 54°19'08.04" Right
D = 31°49'51.56"
R = 180.00'
T = 92.35'
L = 170.65'
E = 22.31'

UTILITIES
See Index, Sheet No. 2.



STREAM PROFILE
Scale: H = 40'



HYDRAULIC DATA TABLE		
ITEM	UNIT	PROPOSED STRUCTURE
Drainage Area	sq mi	4.21
Q100 Discharge	cf/s	2600
Q100 Elevation	ft	459.03
Q100 Backwater	ft	0.09
Q100 Velocity	ft/sec	2.70
Waterway Area Through Structure	sf	975.02
Minimum Low Structure Elevation	ft	462.28
Discharge Through Bridge	cf	2600
Discharge Over Road	cf	0
Roadway Overflow Area	sf	0.0
Q500 Scour Elevation		432.39

CONTINUOUS COMPOSITE
CURVED STEEL BEAM BRIDGE
CLARK COUNTY, INDIANA
4 Spans: 75'-10", 96'-0", 96'-0", & 77'-0" ALONG LINE "LS-5"
Skew: 10°00' Lt.
35'-4" Clear Roadway

12/30/2011 2:16:18 PM
C:\pro\tech\se\lms\24644\BHY001.dgn

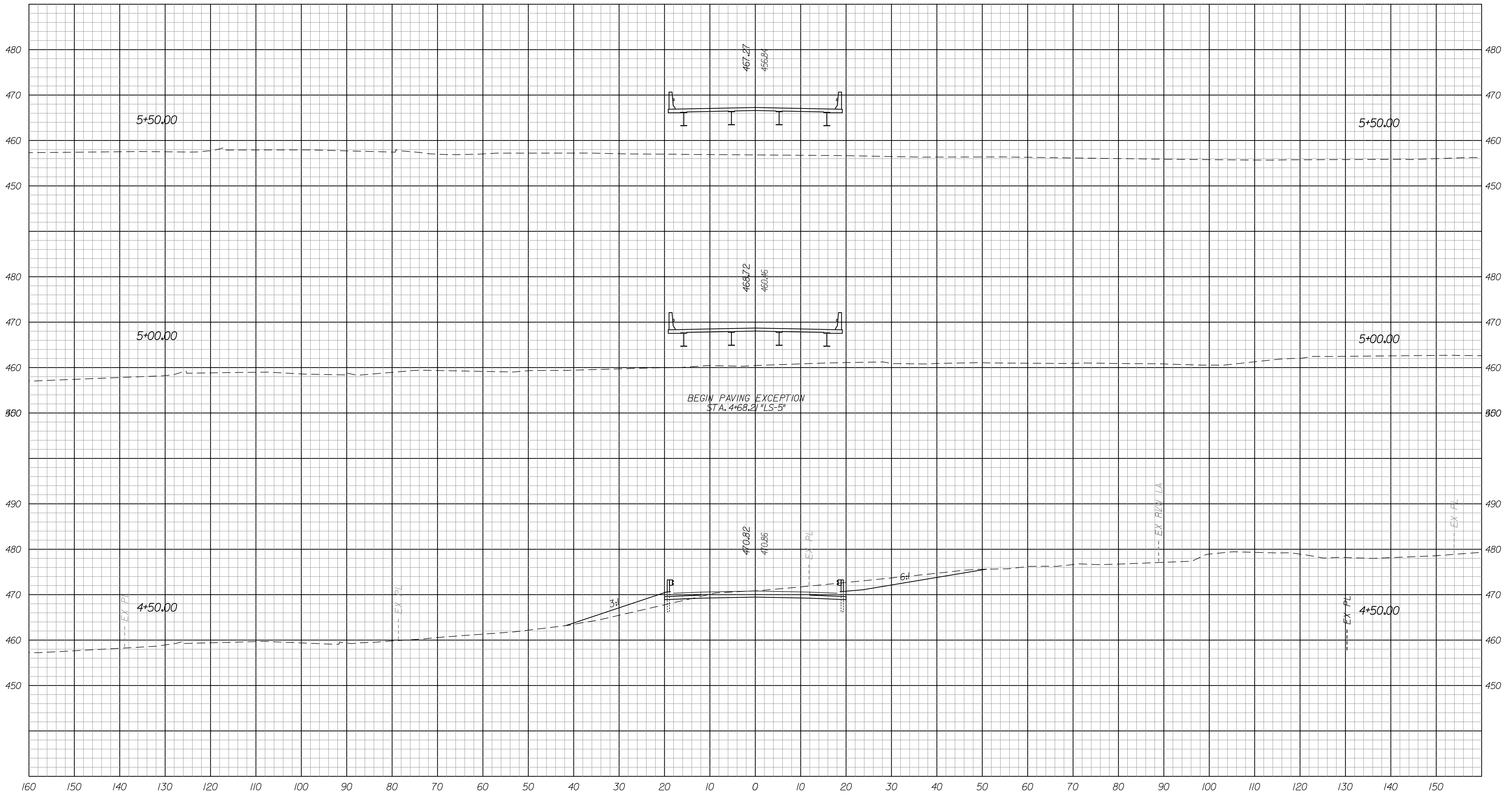
RECOMMENDED FOR APPROVAL _____
DESIGN ENGINEER DATE

DESIGNED: SJA DRAWN: JLF

CHECKED: ELS CHECKED: ELS

INDIANA
DEPARTMENT OF TRANSPORTATION
BROOKHOLLOW WAY OVER LENTZIER CR.
LAYOUT

HORIZONTAL SCALE 1" = 30' U.S.	BRIDGE FILE TBD
VERTICAL SCALE 1" = 10'	DESIGNATION TBD
SURVEY BOOK	DWG. NO. LY-01
	SHEET NO. 6 of 10
CONTRACT TBD	PROJECT TBD



FOR INFORMATION ONLY

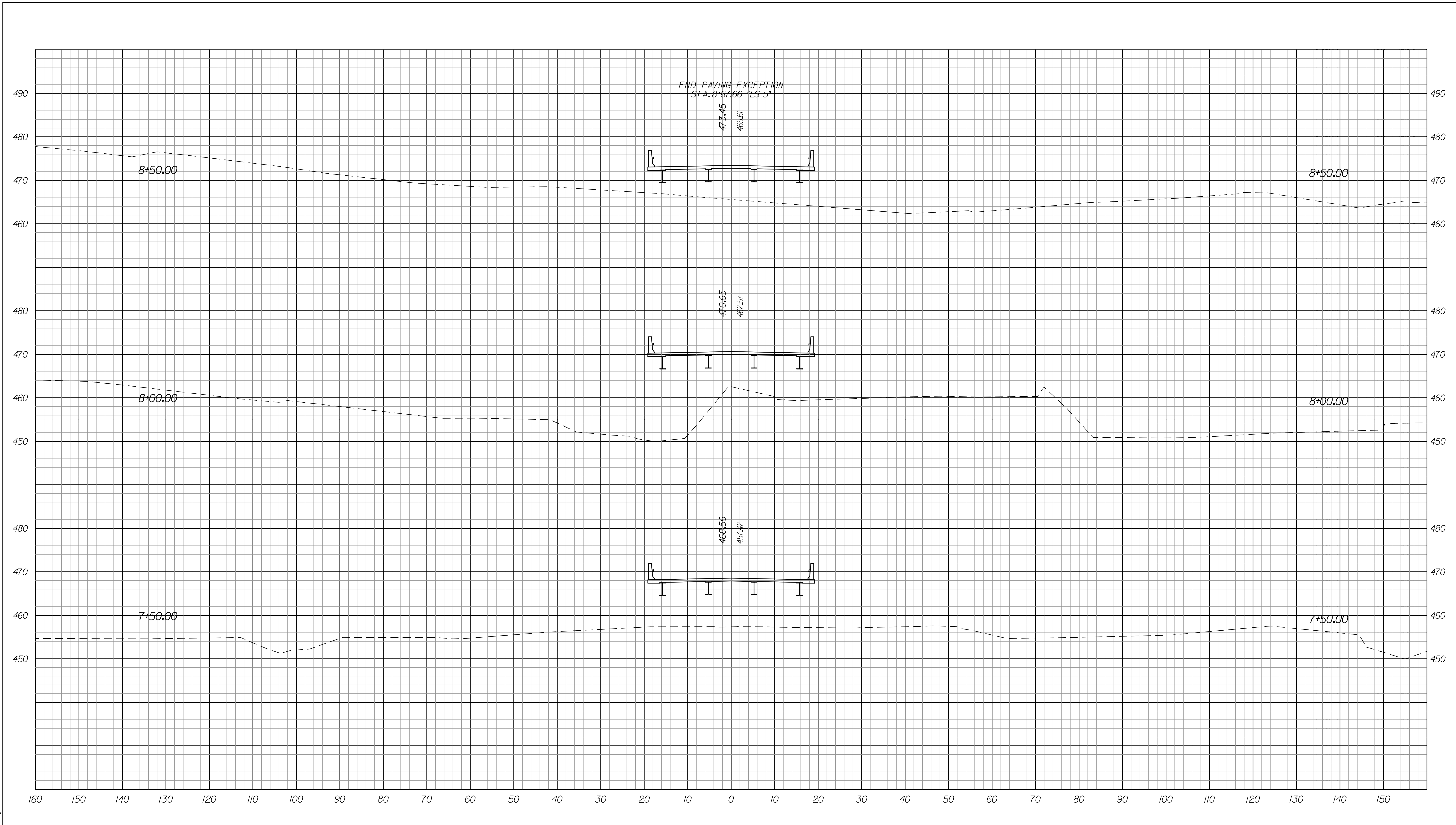
RECOMMENDED FOR APPROVAL _____
DESIGN ENGINEER DATE

DESIGNED: AMH DRAWN: AMH
CHECKED: JLC CHECKED: JMM

INDIANA
DEPARTMENT OF TRANSPORTATION

CROSS SECTIONS
LINE "LS-5"
STA. 4+50.00 TO 5+50.00

HORIZONTAL SCALE 1"=10'	BRIDGE FILE TBD	
VERTICAL SCALE 1"=10'	DESIGNATION TBD	
SURVEY BOOK	DWG. NO. XS-01	SHEET NO. 8 of 10
CONTRACT TBD	PROJECT TBD	



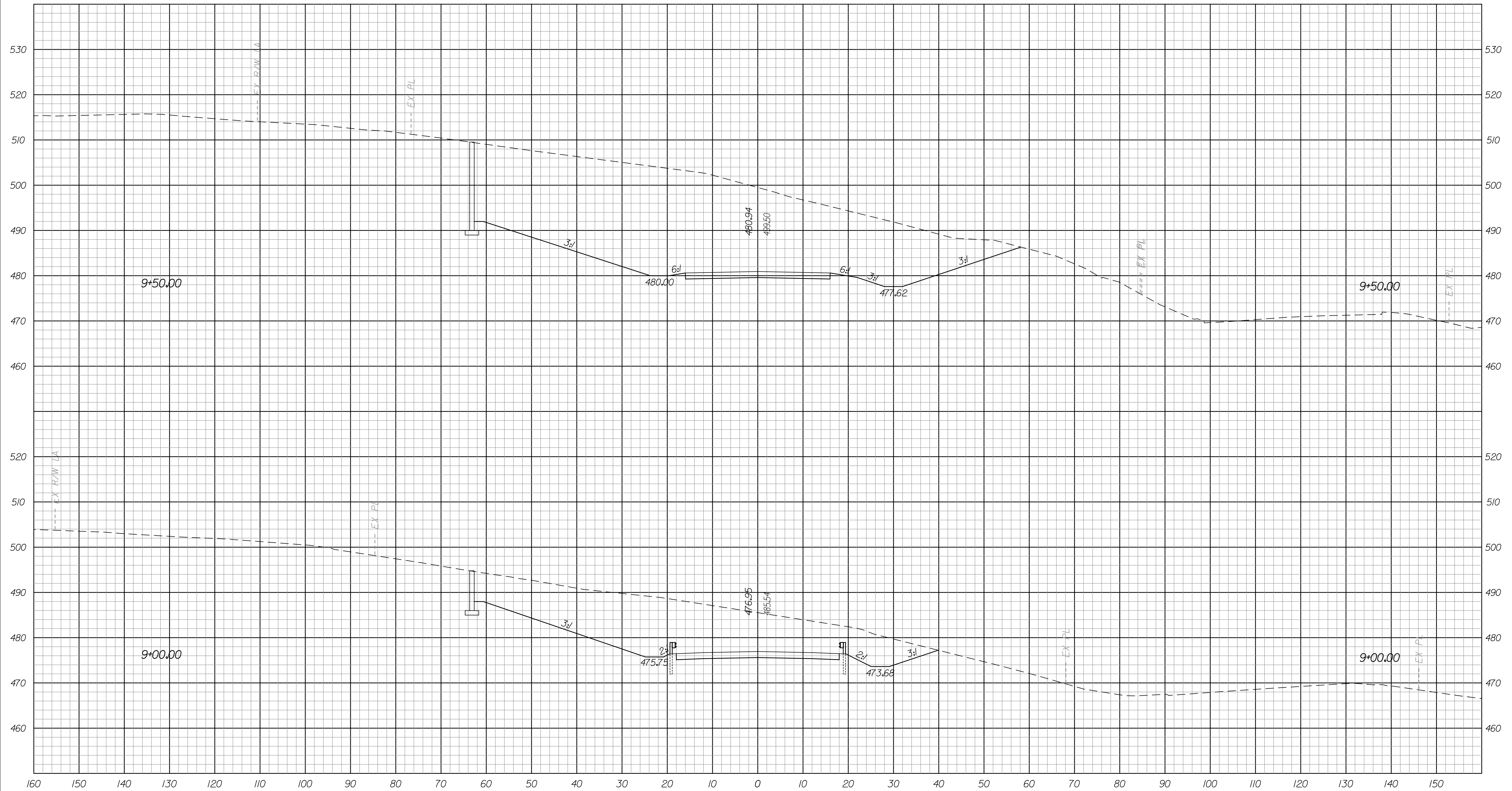
FOR INFORMATION ONLY

RECOMMENDED FOR APPROVAL _____		DESIGN ENGINEER _____ DATE _____	
DESIGNED: AMH	DRAWN: AMH	CHECKED: JLC	CHECKED: JMM

INDIANA
DEPARTMENT OF TRANSPORTATION
CROSS SECTIONS
LINE "LS-5"
STA. 7+50.00 TO 8+50.00

HORIZONTAL SCALE 1"=10'	BRIDGE FILE TBD	
VERTICAL SCALE 1"=10'	DESIGNATION TBD	
SURVEY BOOK	DWG. NO. XS-02	SHEET NO. 9 of 10
CONTRACT	PROJECT TBD	

12/19/2011 3:00:27 PM
 C:\pro\cvt\lsc\lms\lms2\64\4\BHYSD001.dgn



FOR INFORMATION ONLY

RECOMMENDED FOR APPROVAL _____
DESIGN ENGINEER DATE

DESIGNED: AMH DRAWN: AMH
CHECKED: JLC CHECKED: JMM

INDIANA
DEPARTMENT OF TRANSPORTATION

CROSS SECTIONS
LINE "LS-5"
STA. 9+00.00 TO 9+50.00

HORIZONTAL SCALE 1"=10'	BRIDGE FILE TBD	
VERTICAL SCALE 1"=10'	DESIGNATION TBD	
SURVEY BOOK	DWG. NO. XS-03	SHEET NO. 10 of 10
CONTRACT TBD	PROJECT TBD	