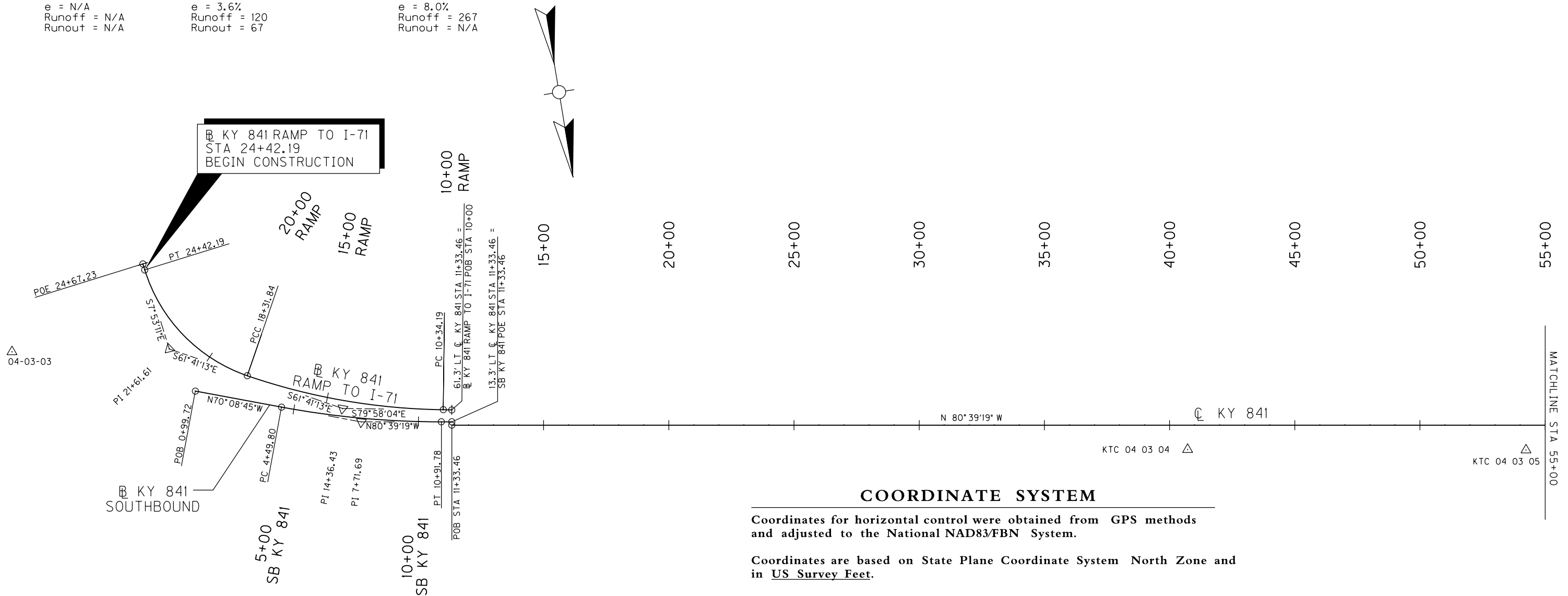


SEE ROW B COORDINATE CONTROL SHEETS FOR ROW INFORMATION

PROPOSED KY 841 SB PI STA 7+71.69 Δ = 10°30'34" LT T = 321.89 L = 641.98 R = 3500.00 E = 14.77 e = N/A Runoff = N/A Runout = N/A	PROPOSED KY 841 RAMP TO I-71 PI STA 14+36.43 Δ = 18°16'51" RT T = 402.25 L = 797.66 R = 2500.00 E = 32.15 e = 3.6% Runoff = 120 Runout = 67	PROPOSED KY 841 RAMP TO I-71 PI STA 21+61.61 Δ = 53°48'02" RT T = 329.77 L = 610.35 R = 650.00 E = 78.87 e = 8.0% Runoff = 267 Runout = N/A
---	--	--

FILE NAME: T:\B65-DESIGN\CONTRACT PLAN SET\ROADWAY\PLAN SET\PLAN & PROFILE\AR300000CC.DGN
 USER: dwt\light DATE PLOTTED: January 27, 2012
 E-SHEET NAME: MicroStation v8.11.7.180



COORDINATE SYSTEM

Coordinates for horizontal control were obtained from GPS methods and adjusted to the National NAD83/FBN System.

Coordinates are based on State Plane Coordinate System North Zone and in US Survey Feet.

The project Grid Factor is 1.000057632 and was obtained by using the average Grid Factors from the Primary Survey Control over the project area.

BASIS OF ELEVATIONS

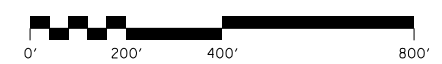
Elevations were derived from NGS/USGS Vertical Control Mark "V 49". The Elevation used for this mark is 470.38 and is the basis of elevation for this project. The location of the Benchmark is as follows:

Monument "V 49" is about 3.2 miles north of Clarksville, IN on the LNI railroad line. From S.R. 131 and I-65 (Exit 4), go 0.2 mile east on S.R. 131 to Charlestown/New Albany Pike. Then, southeast on Charlestown/New Albany Pike. Then 0.1 mile to Industrial Boulevard. Then south on Industrial Boulevard. Across first set of RR tracks then turn southwest onto gravel road to old brick tower and station on right. Station is set flush in concrete switch guide base on LNI railroad. Centerline of LNI railroad tracks are west 35.07', Centerline of Industrial Boulevard at mag az 60 degrees 172.41', centerline of intersection of tracks at mag az 345 degrees 62.89', northeast corner of brick tower at mag az 251 degrees 43.60', southeast corner brick tower at mag az 235 degrees 45.08', metal signal post at mag az 311 degrees 35.07', 5/8 inch rebar with plastic cap marked "LEIGH LS1776" at mag az 69 degrees 46.49'. Note--Disc is set in concrete of unknown depth. Stability uncertain.

**PRELIMINARY
SUBJECT TO CHANGE**

COORDINATE CONTROL POINTS

POINT	DESCRIPTION	Project Coordinates = State Plane Coordinates			STATION and OFFSET
		NORTH (Y)	EAST (X)	ELEV. (Z)	
KTC 04 03 03	KDOH MONUMENT	299726.5000	1257894.8400	679.73	23+62.27, 612.47 Left Ramp
KTC 04 03 04	KDOH MONUMENT	300873.6700	1253325.7500	633.83	40+71.85, 97.22 Right
KTC 04 03 05	KDOH MONUMENT	301095.1500	1251992.3900	631.30	54+23.48, 99.25 Right
POB	KY 841 RAMP TO I-71	300240.1155	1256199.4020		10+00.00
PC	KY 841 RAMP TO I-71	300234.1604	1256233.0646		10+34.19
PI	KY 841 RAMP TO I-71	300164.0889	1256629.1601		14+36.43
PCC	KY 841 RAMP TO I-71	299973.3082	1256983.2849		18+31.84
PT	KY 841 RAMP TO I-71	299816.9035	1257273.6016		21+61.61
PT	KY 841 RAMP TO I-71	299490.2555	1257318.8494		24+42.19
POE	KY 841 RAMP TO I-71	299465.4460	1257322.2860		24+67.23
POB	KY 841 SOUTHBOUND	300000.2240	1257197.9740		0+99.72
PC	KY 841 SOUTHBOUND	300119.1204	1256868.7027		4+49.80
PI	KY 841 SOUTHBOUND	300228.4440	1256565.9419		7+71.69
PT	KY 841 SOUTHBOUND	300280.7113	1256248.3197		10+91.78
POE	KY 841 SOUTHBOUND	300287.4785	1256207.1960		11+33.46
POB	KY 841	300300.6315	1256209.3608		11+33.46



KY 841 COORDINATE CONTROL SHEET
BEGINNING TO STA 55+00

COUNTY OF	ITEM NO.	SHEET NO.
JEFFERSON	5-731.00	R301

PROP SPRINGDALE RD
 PI STA 10+73.76
 $\Delta = 30^{\circ}33'48''$ LT
 T = 54.64
 L = 106.69
 R = 200.00
 E = 7.33
 e = NC
 Runoff = N/A
 Runout = N/A

WOLF PEN BRANCH ROAD
 PI STA 42+50.00
 $\Delta = 1^{\circ}13'47''$ LT

PROP KY 841
 PI STA 80+18.45
 $\Delta = 26^{\circ}07'43''$ RT
 T = 2366.91
 L = 4651.49
 R = 10200.00
 E = 271.02
 e = 2.1%
 Runoff = 127
 Runout = 121

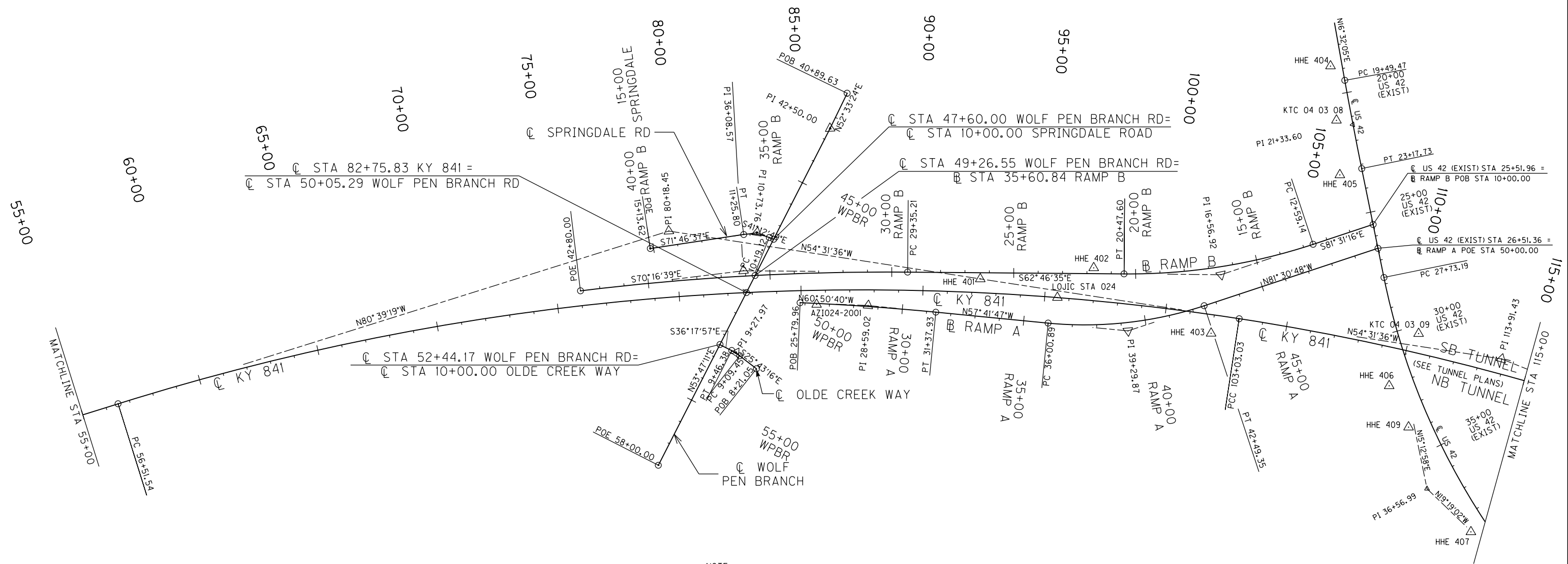
PROP KY 841
 PI STA 113+91.43
 $\Delta = 12^{\circ}48'15''$ RT
 T = 1088.39
 L = 2167.72
 R = 9700.00
 E = 60.87
 e = 2.19%
 Runoff = 132
 Runout = 121

RAMP B
 PI STA 36+08.57
 $\Delta = 7^{\circ}30'04''$ LT
 T = 673.36
 L = 1344.79
 R = 10271.90
 E = 22.05
 e = 2.1%
 Runoff = 63
 Runout = 60

RAMP B
 PI STA 16+56.92
 $\Delta = 18^{\circ}44'41''$ RT
 T = 397.78
 L = 788.45
 R = 2410.00
 E = 32.61
 e = 4.4%
 Runoff = 158
 Runout = 72

SEE ROW @ COORDINATE CONTROL SHEETS FOR ROW INFORMATION

FILE NAME: T:\1865-DESIGN\CONTRACT PLAN SET\ROADWAY\PLAN SET\PLAN & PROFILE\1865\1865.DGN
 USER: dwwright
 DATE PLOTTED: January 27, 2012
 E-SHEET NAME:
 MicroStation v8.11.7.180

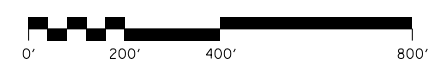


NOTE:
 SEE SHEET R301A FOR COORDINATE INFORMATION

PROP OLDE CREEK WAY
 PI STA 9+27.97
 $\Delta = 10^{\circ}34'41''$ LT
 T = 18.51
 L = 36.92
 R = 200.00
 E = 0.86
 e = NC
 Runoff = N/A
 Runout = N/A

PROP RAMP A
 PI STA 28+59.02
 $\Delta = 3^{\circ}08'53''$ RT
 T = 279.06
 L = 557.97
 R = 10155.45
 E = 3.83
 e = 2.1%
 Runoff = 63
 Runout = 60

PROP RAMP A
 PI STA 39+29.87
 $\Delta = 23^{\circ}49'01''$ LT
 T = 328.98
 L = 648.47
 R = 1560.00
 E = 34.31
 e = 6.0%
 Runoff = 180
 Runout = 60



PRELIMINARY
SUBJECT TO CHANGE

KY 841 COORDINATE CONTROL SHEET
 STA 55+00 TO STA 115+00

COORDINATE CONTROL POINTS

POINT	DESCRIPTION	Project Coordinates = State Plane Coordinates			STATION and OFFSET
		NORTH (Y)	EAST (X)	ELEV. (Z)	
HHE 401	I.P. W/STAMPED ALUM. CAP	302168.7353	1248363.0942	604.50	92+32.66, 56.37 Left
HHE 402	I.P. W/STAMPED ALUM. CAP	302337.5394	1247927.2409	606.87	96+89.33, 134.12 Left
HHE 403	I.P. W/STAMPED ALUM. CAP	302793.7001	1247618.0661	600.17	101+97.35, 76.11 Right
HHE 404	I.P. W/STAMPED ALUM. CAP	302036.0991	1246687.5826	594.31	18+81.56, 47.16 Right
HHE 405	US 42 - I.P. W/STAMPED ALUM. CAP	302451.4405	1246854.3552	566.50	23+25.08, 93.26 Right
HHE 406	US 42 - I.P. W/STAMPED ALUM. CAP	303314.8300	1247062.4337	590.40	31+99.40, 100.45 Right
HHE 407	US 42 - I.P. W/STAMPED ALUM. CAP	303999.9939	1247032.6954	572.63	38+66.02, 71.57 Right
HHE 409	US 42 - I.P. W/STAMPED ALUM. CAP	303501.8048	1247067.6312	598.80	33+80.14, 89.95 Right
AZI024-2001	KY 841	301960.0400	1249009.6000	631.53	85+62.82, 58.02 Right
STA 024	KY 841 - LOJIC MON	302379.2600	1248115.0700	604.04	95+52.21, 0.06 Left
KTC 04 03 08	US 42 - KDOH MON	302245.6300	1246765.9000	587.40	21+04.10, 63.35 Right
KTC 04 03 09	US 42 - KDOH MON	303177.7800	1246858.4900	575.14	30+34.92, 81.69 Left
PC	KY 841	301058.7014	1251602.6084		58+02.17
PI	KY 841	301255.6531	1250405.7429		70+15.13
PCC	KY 841	301756.5068	1249301.0154		82+14.14
PI	KY 841	302679.3109	1247265.5970		104+48.98
POB	KY 841 SB	302133.8487	1248498.2811		90+93.20
PC	KY 841 SB	302372.6160	1248070.9306		95+82.73
PI	KY 841 SB	302612.5352	1247641.5183		100+74.62
PCC	KY 841 SB	302909.5136	1247249.3961		105+64.93
PI	KY 841 SB	302920.1012	1247235.4166		105+82.47
PT	KY 841 SB	302930.7348	1247221.4721		106+00.00
POB	RAMP B	302694.4143	1246823.7946		10+00.00
PC	RAMP B	302656.2054	1247080.1040		12+59.14
PI	RAMP B	302597.5550	1247473.5375		16+56.92
PT	RAMP B	302415.5838	1247827.2556		20+47.60
PC	RAMP B	302009.5304	1248616.5477		29+35.21
PI	RAMP B	301701.4940	1249215.3132		36+08.57
POE	RAMP B	301474.2596	1249849.1673		42+80.00
POB	WOLF PEN BR	301243.2342	1248508.0582		40+89.63
PI	WOLF PEN BR	301340.7372	1248635.3870		42+50.00
POE	WOLF PEN BR	302256.4739	1249885.9577		58+00.00
POB	SPRINGDALE RD	301642.0441	1249046.8650		10+00.00
PC	SPRINGDALE RD	301627.6618	1249059.4618		10+19.12
PI	SPRINGDALE RD	301586.5547	1249095.4657		10+73.76
PT	SPRINGDALE RD	301569.4663	1249147.3700		11+25.80
POE	SPRINGDALE RD	301448.1883	1249515.7396		15+13.63
POB	OLDE CREEK WAY	302083.0392	1249349.0682		8+21.05
PC	OLDE CREEK WAY	302003.4012	1249387.4317		9+09.45
PI	OLDE CREEK WAY	301986.7209	1249395.4670		9+27.97
PT	OLDE CREEK WAY	301971.7991	1249406.4278		9+46.38
POE	OLDE CREEK WAY	301928.5816	1249438.1734		10+00.00
POB	RAMP A	301923.1401	1249066.7469		25+79.96
PI	RAMP A	302059.0908	1248823.0479		28+59.02
PT	RAMP A	302208.2191	1248587.1824		31+37.93
PC	RAMP A	302455.6251	1248195.8782		36+00.89
PI	RAMP A	302631.4361	1247917.8107		39+29.87
PT	RAMP A	302679.9868	1247592.4282		42+49.35
POE	RAMP A	302790.7653	1246850.0017		50+00.00

**PRELIMINARY
SUBJECT TO CHANGE**

SEE ROW @ COORDINATE CONTROL SHEETS FOR ROW INFORMATION

KY 841 COORDINATE CONTROL SHEET
STA 55+00 TO STA 115+00

FILE NAME: T:\B65-DESIGN\CONTRACT PLAN SET\ROADWAY\PLAN SET\PLAN & PROFILE\AR3010ACC.DGN

USER: dwt\light DATE PLOTTED: January 27, 2012

E-SHEET NAME:

MicroStation v8.11.7.180

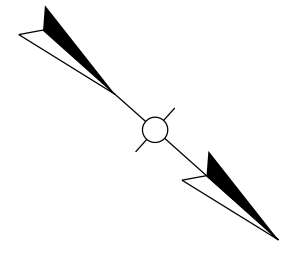
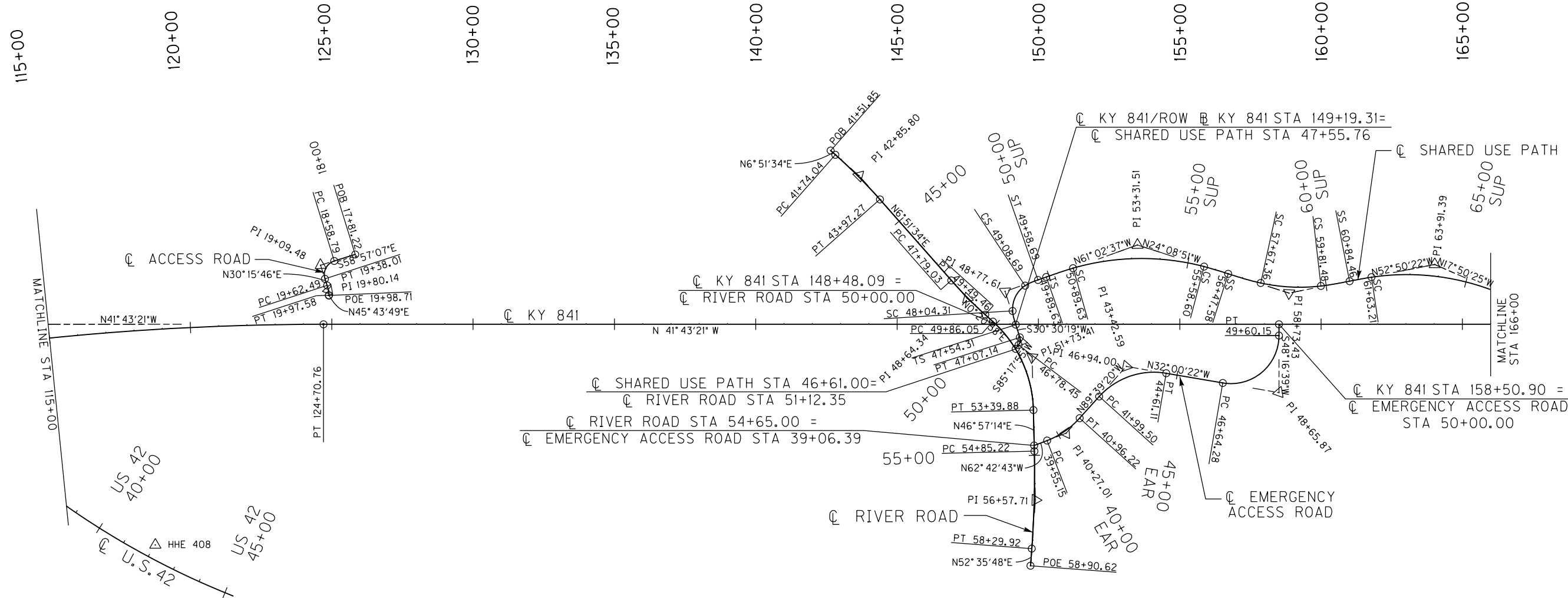
COUNTY OF	ITEM NO.	SHEET NO.
JEFFERSON	5-731.00	R302

SEE ROW @ COORDINATE CONTROL SHEETS FOR ROW INFORMATION

ACCESS ROAD	
PI STA 19+09.48	PI STA 19+80.14
$\Delta = 90^{\circ}47'06"$ LT	$\Delta = 15^{\circ}28'03"$ RT
T = 50.69	T = 17.65
L = 79.22	L = 35.09
R = 50.00	R = 130.00
E = 21.20	E = 1.19
e = 2.00%	e = 2.00%
Runoff = N/A	Runoff = N/A
Runout = N/A	Runout = N/A

SHARED USE PATH				
PI STA 46+94.00	PI STA 48+77.61	PI STA 53+31.51	PI STA 58+73.43	PI STA 63+91.39
$\Delta = 54^{\circ}47'36"$ LT	$\Delta = 88^{\circ}27'04"$ RT	$\Delta = 36^{\circ}53'46"$ RT	$\Delta = 28^{\circ}41'31"$ LT	$\Delta = 34^{\circ}59'56"$ RT
T = 15.55	Ts = 123.29	Ts = 341.88	Ts = 225.85	Ts = 306.93
L = 28.69	Ls = 50.00	Ls = 100.00	Ls = 119.78	Ls = 78.75
R = 30.00	Lc = 104.38	Lc = 468.97	Lc = 214.12	Lc = 479.85
E = 3.79	$\theta s = 14^{\circ}19'26"$	$\theta s = 3^{\circ}16'27"$	$\theta s = 5^{\circ}16'45"$	$\theta s = 2^{\circ}39'14"$
e = 0.44%	LT = 33.44	LT = 66.68	LT = 79.89	LT = 52.50
Runoff = 5	ST = 16.77	ST = 33.34	ST = 39.96	ST = 26.25
Runout = N/A	R = 100.00	R = 875.00	R = 650.00	R = 850.00
	E = 41.00	E = 47.85	E = 21.75	E = 41.41
	e = 2.00%	e = 2.00%	e = 2.00%	e = 2.00%
	Runoff = 50	Runoff = 100.00	Runoff = 119.78	Runoff = 78.75
	Runout = N/A	Runout = N/A	Runout = N/A	Runout = N/A

FILE NAME: T:\1865-DESIGN\CONTRACT PLAN SET\ROADWAY\PLAN SET\PLAN & PROFILE\AR30200CC.DGN
 USER: Interonymus
 DATE PLOTTED: January 27, 2012
 E-SHEET NAME:
 MicroStation v8.11.7.180



PROP KY 841	
PI STA 113+91.43	
$\Delta = 12^{\circ}48'15"$ RT	
T = 1088.39	
L = 2167.72	
R = 9700.00	
E = 60.87	
e = 2.19%	
Runoff = 132	
Runout = 121	

KTC 04 03 10

EXIST RIVER ROAD		
PI 48+64.34	PI 51+73.41	PI 56+57.71
$\Delta = 6^{\circ}30'37"$ LT	$\Delta = 46^{\circ}36'16"$ RT	$\Delta = 5^{\circ}38'34"$ LT
T = 85.31	T = 187.36	T = 172.49
L = 170.44	L = 353.83	L = 344.70
R = 1500.00	R = 435.00	R = 3500.00
E = 2.42	E = 38.63	E = 4.25

EMERGENCY ACCESS ROAD		
PI STA 40+27.01	PI STA 43+42.59	PI STA 48+65.87
$\Delta = 26^{\circ}56'37"$ LT	$\Delta = 57^{\circ}38'58"$ RT	$\Delta = 99^{\circ}42'59"$ LT
T = 71.87	T = 143.08	T = 201.58
L = 141.08	L = 261.60	L = 295.86
R = 300.00	R = 260.00	R = 170.00
E = 8.49	E = 36.77	E = 93.70
e = 2.00%	e = 2.00%	e = 2.00%
Runoff = 23	Runoff = 23	Runoff = 23
Runout = 23	Runout = 23	Runout = 23

KTC 04 03 13

NOTE:
SEE SHEET R302A FOR COORDINATE INFORMATION

**PRELIMINARY
SUBJECT TO CHANGE**

KY 841 COORDINATE CONTROL SHEET
STA 115+00 TO STA 166+00

COORDINATE CONTROL POINTS

POINT	DESCRIPTION	Project Coordinates = State Plane Coordinates			STATION and OFFSET
		NORTH (Y)	EAST (X)	ELEV. (Z)	
KTC 04 03 10	KY 841 - KDOH MON	306518.4100	1246786.1100	447.61	135 + 68.56, 2197.13 Right
KTC 04 03 12	KY 841 - KDOH MON	306752.4400	1244977.3900	460.98	149 + 46.98, 1002.90 Right
KTC 04 03 13	KY 841 - KDOH MON	307604.0022	1245365.3944	459.69	153 + 24.34, 1859.23 Right
HHE 408	US 42 - I.P. W/STAMPED ALUM. CAP	304311.1005	1246855.7511	534.72	42 + 02.32, 47.73 Left
PT	KY 841	304236.1180	1245877.4353		124 + 70.76
POB	ACCESS ROAD	304155.5937	1245618.5770		17 + 81.22
PC	ACCESS ROAD	304115.5866	1245685.0339		18 + 58.79
PI	ACCESS ROAD	304089.4430	1245728.4618		19 + 09.48
PT	ACCESS ROAD	304133.2250	1245754.0078		19 + 38.01
PC	ACCESS ROAD	304154.3623	1245766.3410		19 + 62.49
PI	ACCESS ROAD	304169.6109	1245775.2384		19 + 80.14
PT	ACCESS ROAD	304181.9344	1245787.8801		19 + 97.58
POE	ACCESS ROAD	304182.7243	1245788.6904		19 + 98.71
POB	RIVER ROAD	305166.7072	1244225.0563		41 + 51.85
PC	RIVER ROAD	305188.8946	1244224.9610		41 + 74.04
PI	RIVER ROAD	305300.6518	1244224.4810		42 + 85.80
PT	RIVER ROAD	305411.6101	1244237.8289		43 + 97.27
PC	RIVER ROAD	305790.6364	1244283.4246		47 + 79.03
PI	RIVER ROAD	305875.3362	1244293.6138		48 + 64.34
PT	RIVER ROAD	305960.6451	1244294.1339		49 + 49.46
PC	RIVER ROAD	305997.2284	1244294.3569		49 + 86.05
PI	RIVER ROAD	306184.5861	1244295.4992		51 + 73.41
PT	RIVER ROAD	306312.4763	1244432.4235		53 + 39.88
PC	RIVER ROAD	306411.6843	1244538.6396		54 + 85.22
PI	RIVER ROAD	306529.4234	1244664.6957		56 + 57.71
PT	RIVER ROAD	306634.1973	1244801.7179		58 + 29.92
POE	RIVER ROAD	306671.0656	1244849.9339		58 + 90.62
POB	SHARED USE PATH	306121.6518	1244313.3238		46 + 61.00
PC	SHARED USE PATH	306120.2213	1244295.9293		46 + 78.45
PI	SHARED USE PATH	306118.9469	1244280.4332		46 + 94.00
PT	SHARED USE PATH	306105.5507	1244272.5406		47 + 07.14
TS	SHARED USE PATH	306064.9102	1244248.5964		47 + 54.31
SC	SHARED USE PATH	306024.2051	1244219.7998		48 + 04.31
PI	SHARED USE PATH	305983.6838	1244186.0112		48 + 77.61
CS	SHARED USE PATH	305997.9481	1244123.6170		49 + 08.69
ST	SHARED USE PATH	306018.3748	1244078.1319		49 + 58.69
TS	SHARED USE PATH	306033.3540	1244051.0602		49 + 89.63
SC	SHARED USE PATH	306083.4188	1243964.5119		50 + 89.63
PI	SHARED USE PATH	306198.8718	1243751.9212		53 + 31.51
CS	SHARED USE PATH	306425.5229	1243651.9620		55 + 58.60
SS	SHARED USE PATH	306506.0778	1243614.1956		56 + 47.58
SC	SHARED USE PATH	306613.7789	1243561.8823		57 + 67.36
PI	SHARED USE PATH	306712.1613	1243521.8049		58 + 73.43
CS	SHARED USE PATH	306779.7495	1243428.1345		59 + 81.48
SS	SHARED USE PATH	306844.0792	1243347.7615		60 + 84.46
SC	SHARED USE PATH	306892.6048	1243285.7528		61 + 63.21
PI	SHARED USE PATH	307029.4820	1243103.1539		63 + 91.39
POB	EMERG ACCESS RD	306397.7305	1244524.1627		39 + 06.05
PC	EMERG ACCESS RD	306420.2387	1244480.5313		39 + 55.15
PI	EMERG ACCESS RD	306453.1873	1244416.6618		40 + 27.01
PT	EMERG ACCESS RD	306453.6192	1244344.7957		40 + 96.22
PC	EMERG ACCESS RD	306454.2401	1244241.5155		41 + 99.50
PI	EMERG ACCESS RD	306455.1001	1244098.4360		43 + 42.59
PT	EMERG ACCESS RD	306576.4324	1244022.6008		44 + 61.11
PC	EMERG ACCESS RD	306748.7236	1243914.9153		46 + 64.28
PI	EMERG ACCESS RD	306919.6635	1243808.0744		48 + 65.87
PT	EMERG ACCESS RD	306785.5057	1243657.6180		49 + 60.15
POE	EMERG ACCESS RD	306758.9798	1243627.8695		50 + 00.00

**PRELIMINARY
SUBJECT TO CHANGE**

SEE ROW @ COORDINATE CONTROL SHEETS FOR ROW INFORMATION

KY 841 COORDINATE CONTROL SHEET
STA 115+00 TO STA 166+00

FILE NAME: T:\B65-DESIGN\CONTRACT PLAN SET\ROADWAY\PLAN SET\PLAN & PROFILE\AR3020ACC.DGN

USER: dwt\right
DATE PLOTTED: January 27, 2012

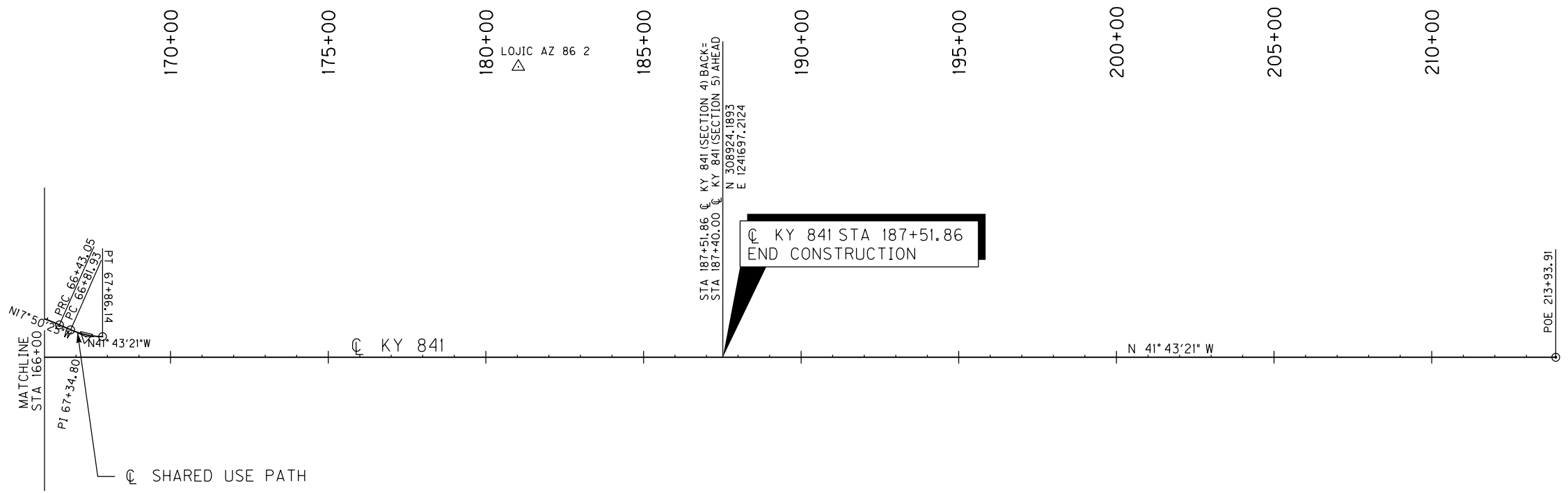
E-SHEET NAME:

MicroStation v8.11.7.180

SEE ROW & COORDINATE CONTROL SHEETS FOR ROW INFORMATION

SHARED USE PATH
 PI STA 67+34.80
 $\Delta = 23^\circ 52' 56''$ LT
 T = 52.87
 L = 104.21
 R = 250.00
 E = 5.53
 e = 1.50%
 Runoff = 21
 Runout = N/A

PREPARED BY _____ DATE _____
 CHECKED BY _____ DATE _____
 APPROVED BY _____ DATE _____



KY 841 STA 187+51.86
 END CONSTRUCTION

COORDINATE CONTROL POINTS

POINT	DESCRIPTION	Project Coordinates = State Plane Coordinates			STATION and OFFSET
		NORTH (Y)	EAST (X)	ELEV. (Z)	
PRC	SHARED USE PATH	307285.0948	1243020.8868		66 + 43.05
PI	SHARED USE PATH	307322.1057	1243008.9752		66 + 81.93
PT	SHARED USE PATH	307372.4337	1242992.7775		67 + 34.80
POE	SHARED USE PATH	307411.8949	1242957.5910		67 + 86.14
POT	KY 841	308924.1893	1241697.2124		187 + 51.86
POE	KY 841	304236.1180	1239939.2670		213 + 93.31

**PRELIMINARY
 SUBJECT TO CHANGE**

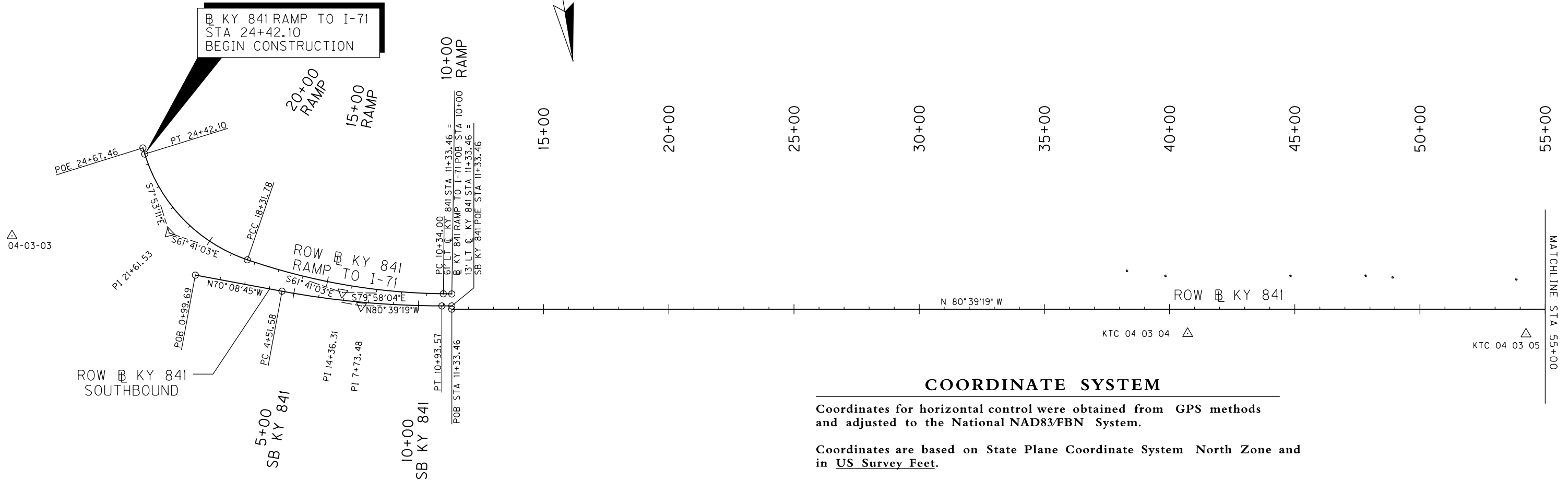
USER: \$\$\$USER\$\$\$
 DATE: \$\$\$DATE\$\$\$
 FILE NAME: \$\$\$design\$file\$specification\$\$\$
 E-SHEET NAME:

ROW B KY 841 SB PI STA 7+73.48 Δ = 10°30'34" LT T = 321.90 L = 641.99 R = 3500.00 E = 14.77 e = N/A Runoff = N/A Runout = N/A	ROW B KY 841 RAMP TO I-71 PI STA 14+36.31 Δ = 18°17'02" RT T = 402.31 L = 797.78 R = 2500.00 E = 32.16 e = N/A Runoff = N/A Runout = N/A	ROW B KY 841 RAMP TO I-71 PI STA 21+61.53 Δ = 53°47'51" RT T = 329.75 L = 610.31 R = 650.00 E = 78.86 e = N/A Runoff = N/A Runout = N/A
--	---	--

RIGHT OF WAY MONUMENT POINTS

STATION and OFFSET	ALIGNMENT	TYPE	DESCRIPTION	Project Coordinates = State Plane Coordinates	
				NORTH (Y)	EAST (X)
38+30.10, 153.44 Left	ROW B KY 841	1	R/W MONUMENT	300587.0918	1253523.5923
39+83.94, 133.26 Left	ROW B KY 841	1	R/W MONUMENT	300631.9788	1253375.0676
44+83.30, 133.44 Left	ROW B KY 841	1	R/W MONUMENT	300712.8880	1252882.3101
47+83.44, 133.94 Left	ROW B KY 841	1	R/W MONUMENT	300761.1253	1252586.0672
48+91.00, 127.26 Left	ROW B KY 841	1	R/W MONUMENT	300785.1858	1252481.0219
53+85.00, 119.00 Left	ROW B KY 841	1	R/W MONUMENT	300873.5440	1251994.9180

FILE NAME: T:\B65-DESIGN\CONTRACT PLAN SET\ROADWAY\PLAN SET\PLAN & PROFILE\AR30400CC.DGN
 USER: dwt\light
 DATE PLOTTED: January 27, 2012
 E-SHEET NAME:
 MicroStation v8.11.7.180



COORDINATE SYSTEM

Coordinates for horizontal control were obtained from GPS methods and adjusted to the National NAD83/FBN System.

Coordinates are based on State Plane Coordinate System North Zone and in US Survey Feet.

The project Grid Factor is 1.000057632 and was obtained by using the average Grid Factors from the Primary Survey Control over the project area.

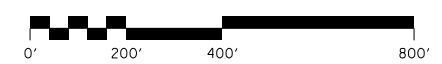
BASIS OF ELEVATIONS

Elevations were derived from NGS/USGS Vertical Control Mark "V 49". The Elevation used for this mark is 470.38 and is the basis of elevation for this project. The location of the Benchmark is as follows:

Monument "V 49" is about 3.2 miles north of Clarksville, IN on the LNI railroad line. From S.R. 131 and I-65 (Exit 4), go 0.2 mile east on S.R. 131 to Charlestown/New Albany Pike. Then, southeast on Charlestown/New Albany Pike. Then 0.1 mile to Industrial Boulevard. Then south on Industrial Boulevard. Across first set of RR tracks then turn southwest onto gravel road to old brick tower and station on right. Station is set flush in concrete switch guide base on LNI railroad. Centerline of LNI railroad tracks are west 35.07', Centerline of Industrial Boulevard at mag az 60 degrees 172.41', centerline of intersection of tracks at mag az 345 degrees 62.89', northeast corner of brick tower at mag az 251 degrees 43.60', southeast corner brick tower at mag az 235 degrees 45.08', metal signal post at mag az 311 degrees 35.07', 5/8 inch rebar with plastic cap marked "LEIGH LS1776" at mag az 69 degrees 46.49'. Note--Disc is set in concrete of unknown depth. Stability uncertain.

FOR ROW INFORMATION ONLY

SEE ROW STRIP MAPS AND DETAIL SHEETS FOR ROW INFORMATION



KY 841 ROW COORDINATE CONTROL SHEET
BEGINNING TO STA 55+00

RIGHT OF WAY COORDINATE CONTROL POINTS

POINT	DESCRIPTION	Project Coordinates = State Plane Coordinates			STATION and OFFSET
		NORTH (Y)	EAST (X)	ELEV. (Z)	
KTC 04 03 03	KDOH MONUMENT	299726.5000	1257894.8400	679.73	23+62.27, 612.47 Left Ramp
KTC 04 03 04	KDOH MONUMENT	300873.6700	1253325.7500	633.83	40+71.85, 97.22 Right
KTC 04 03 05	KDOH MONUMENT	301095.1500	1251992.3900	631.30	54+23.48, 99.25 Right
POB	ROW B KY 841 RAMP TO I-71	300240.4411	1256199.4557		10+00.00
PC	ROW B KY 841 RAMP TO I-71	300234.5177	1256232.9390		10+34.00
PI	ROW B KY 841 RAMP TO I-71	300164.4350	1256629.0983		14+36.31
PCC	ROW B KY 841 RAMP TO I-71	299973.6057	1256983.2705		18+31.78
PT	ROW B KY 841 RAMP TO I-71	299817.1960	1257273.5611		21+61.53
POE	ROW B KY 841 RAMP TO I-71	299490.5685	1257318.8060		24+42.10
POB	ROW B KY 841 SOUTHBOUND	299465.4460	1257322.2860		24+67.46
PC	ROW B KY 841 SOUTHBOUND	300000.2240	1257197.9740		0+99.69
PI	ROW B KY 841 SOUTHBOUND	300119.7349	1256867.0007		4+51.58
PT	ROW B KY 841 SOUTHBOUND	300229.0596	1256564.2373		7+73.48
POE	ROW B KY 841 SOUTHBOUND	300281.3268	1256246.6122		10+93.57
POB	ROW B KY 841 SOUTHBOUND	300287.8041	1256207.2496		11+33.46
POB	ROW B KY 841	300300.6315	1256209.3608		11+33.46

COUNTY OF	ITEM NO.	SHEET NO.
JEFFERSON	5-731.00	R305

SPRINGDALE RD
 PI STA 10+73.76
 $\Delta = 30^{\circ}33'48''$ LT
 T = 54.64
 L = 106.69
 R = 200.00
 E = 7.33
 e = N/A
 Runoff = N/A
 Runout = N/A

WOLF PEN BRANCH ROAD
 PI STA 42+50.00
 $\Delta = 1^{\circ}13'47''$ LT

ROW B KY 841
 PI STA 70+15.13
 $\Delta = 15^{\circ}02'37''$ RT
 T = 1212.96
 L = 2411.97
 R = 9186.33
 E = 79.73
 e = N/A
 Runoff = N/A
 Runout = N/A

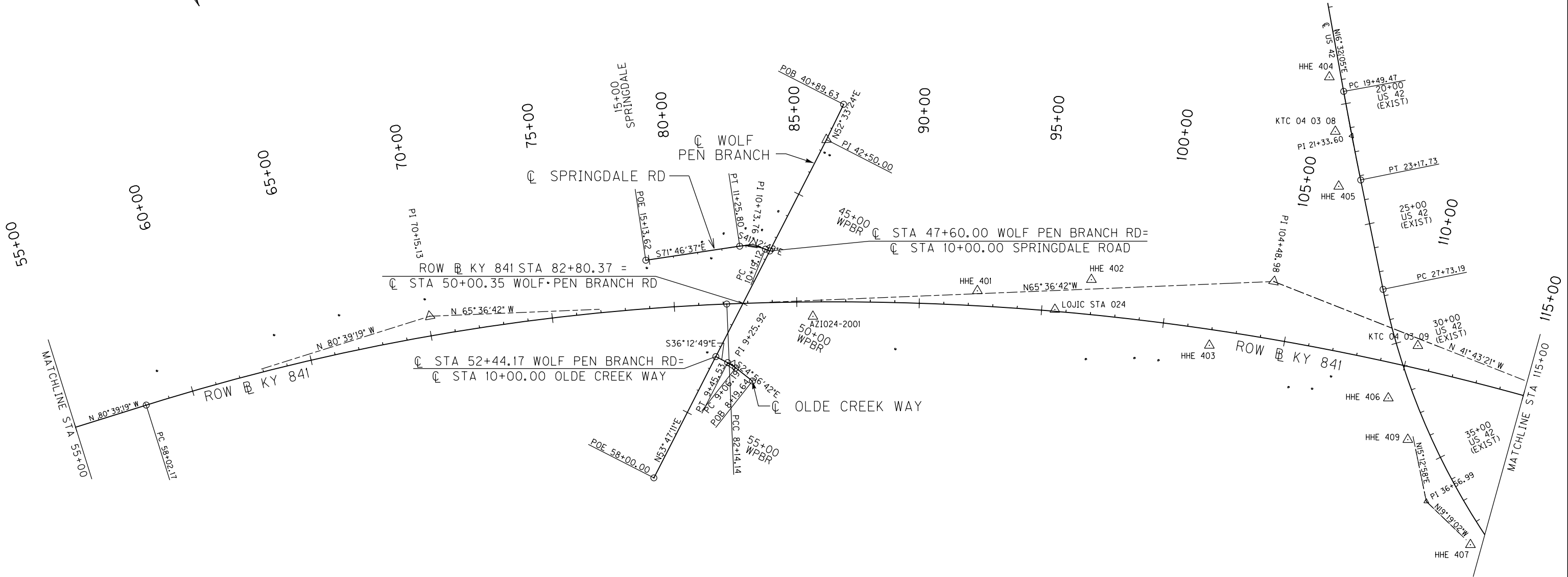
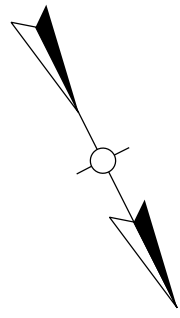
ROW B KY 841
 PI STA 104+48.98
 $\Delta = 23^{\circ}53'21''$ RT
 T = 2234.84
 L = 4404.73
 R = 10564.28
 E = 233.80
 e = N/A
 Runoff = N/A
 Runout = N/A

FILE NAME: T:\1865-DESIGN\CONTRACT PLAN SET\ROADWAY\PLAN SET\PLAN & PROFILE\18650000.DGN

USER: dwright
 DATE PLOTTED: January 27, 2012

E-SHEET NAME:

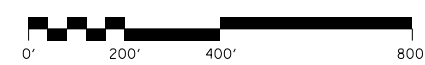
MicroStation v8.11.7.180



OLDE CREEK WAY
 PI STA 9+25.92
 $\Delta = 11^{\circ}16'08''$ LT
 T = 19.73
 L = 39.34
 R = 200.00
 E = 0.86
 e = N/A
 Runoff = N/A
 Runout = N/A

FOR ROW INFORMATION ONLY

SEE ROW STRIP MAPS AND DETAIL SHEETS FOR ROW INFORMATION



NOTE:
 SEE SHEET R301A FOR COORDINATE INFORMATION

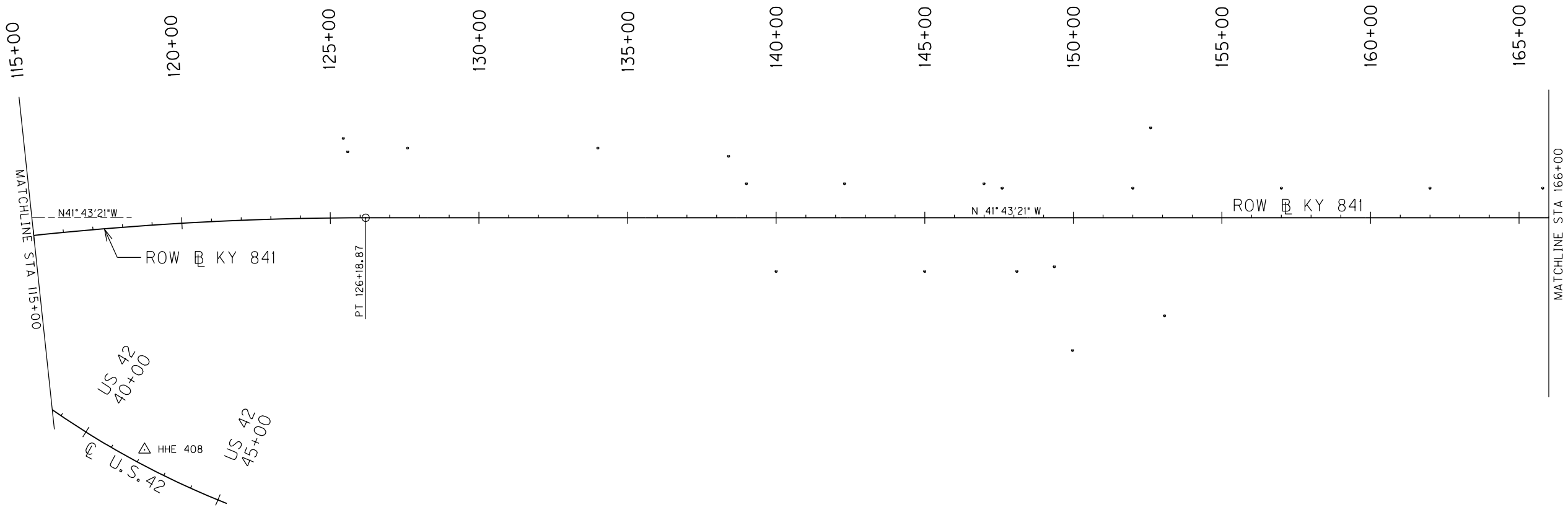
KY 841 ROW COORDINATE CONTROL SHEET
 STA 55+00 TO STA 115+00

RIGHT OF WAY MONUMENT POINTS

STATION and OFFSET	ALIGN	TYPE	DESCRIPTION	Project Coordinates = State Plane Coordinates	
				NORTH (Y)	EAST (X)
125+45.45, 267.85 Left	ROW B KY 841	1	R/W MONUMENT	304113.0674	1245628.6376
125+59.51, 222.53 Left	ROW B KY 841	1	R/W MONUMENT	304154.1158	1245652.6343
127+60.00, 235.00 Left	ROW B KY 841	1	R/W MONUMENT	304296.2773	1245508.9386
134+00.00, 235.00 Left	ROW B KY 841	1	R/W MONUMENT	304773.9585	1245083.0036
138+40.00, 207.50 Left	ROW B KY 841	1	R/W MONUMENT	305120.6662	1244810.6986
139+00.00, 115.00 Left	ROW B KY 841	1	R/W MONUMENT	305227.0097	1244839.8070
139+00.00, 114.00 Left	ROW B KY 841	2	R/W WITNESS MON	305227.6752	1244840.5534
140+00.00, 180.00 Right	ROW B KY 841	1	R/W MONUMENT	305497.9770	1244993.4360
142+30.00, 115.00 Left	ROW B KY 841	1	R/W MONUMENT	305473.3141	1244620.1843
142+30.00, 114.00 Left	ROW B KY 841	2	R/W WITNESS MON	305473.9796	1244620.9306
145+00.00, 180.00 Right	ROW B KY 841	1	R/W MONUMENT	305871.1653	1244660.6741
145+00.00, 179.00 Right	ROW B KY 841	2	R/W WITNESS MON	305870.4998	1244659.9277
146+99.45, 115.00 Left	ROW B KY 841	1	R/W MONUMENT	305823.6990	1244307.7557

RIGHT OF WAY COORDINATE CONTROL POINTS

POINT	DESCRIPTION	Project Coordinates = State Plane Coordinates			STATION and OFFSET
		NORTH (Y)	EAST (X)	ELEV. (Z)	
KTC 04 03 10	KY 841 - KDOH MON	306518.4100	1246786.1100	447.61	135+68.56, 2197.13 Right
KTC 04 03 12	KY 841 - KDOH MON	306752.4400	1244977.3900	460.98	149+46.98, 1002.90 Right
KTC 04 03 13	KY 841 - KDOH MON	307604.0022	1245365.3944	459.69	153+24.34, 1859.23 Right
HHE 408	US 42 - I.P. W/STAMPED ALUM. CAP	304311.1005	1246855.7511	534.72	42+02.32, 47.73 Left
PT	ROW B KY 841	304347.3417	1245778.2602		126+18.87



RIGHT OF WAY MONUMENT POINTS

STATION and OFFSET	ALIGN	TYPE	DESCRIPTION	Project Coordinates = State Plane Coordinates	
				NORTH (Y)	EAST (X)
147+60.57, 100.00 Left	ROW B KY 841	1	R/W MONUMENT	305879.3014	1244278.2737
148+10.00, 180.00 Right	ROW B KY 841	1	R/W MONUMENT	306102.5421	1244454.3618
148+10.00, 179.00 Right	ROW B KY 841	2	R/W WITNESS MON	306101.8766	1244453.6154
149+35.87, 164.11 Right	ROW B KY 841	1	R/W MONUMENT	306185.9074	1244358.7316
149+97.21, 445.67 Right	ROW B KY 841	1	R/W MONUMENT	306419.0795	1244528.0589
152+00.00, 100.00 Left	ROW B KY 841	1	R/W MONUMENT	306207.2825	1243985.8221
152+60.00, 302.89 Left	ROW B KY 841	1	R/W MONUMENT	306117.0393	1243794.4608
153+06.82, 329.14 Right	ROW B KY 841	1	R/W MONUMENT	306572.6134	1244235.0365
157+00.00, 100.00 Left	ROW B KY 841	1	R/W MONUMENT	306580.4709	1243653.0603
162+00.00, 100.00 Left	ROW B KY 841	1	R/W MONUMENT	306953.6594	1243320.2986
165+79.48, 100.00 Left	ROW B KY 841	1	R/W MONUMENT	307236.8958	1243067.7445

ROW B KY 841
 PI STA 104+48.98
 $\Delta = 23^{\circ}53'21''$ RT
 T = 2234.84
 L = 4404.73
 R = 10564.28
 E = 233.80
 e = N/A
 Runoff = N/A
 Runout = N/A

FOR ROW INFORMATION ONLY

SEE ROW STRIP MAPS AND DETAIL SHEETS FOR ROW INFORMATION

NOTE:
 SEE SHEET R302A FOR COORDINATE INFORMATION

KY 841 ROW COORDINATE CONTROL SHEET
 STA 115+00 TO STA 166+00

FILE NAME: T:\B65-DESIGN\CONTRACT PLAN SET\ROADWAY\PLAN SET\PLAN & PROFILE\AR30600CC.DGN
 USER: dwwright
 DATE PLOTTED: January 27, 2012
 E-SHEET NAME:
 MicroStation v8.11.7.180

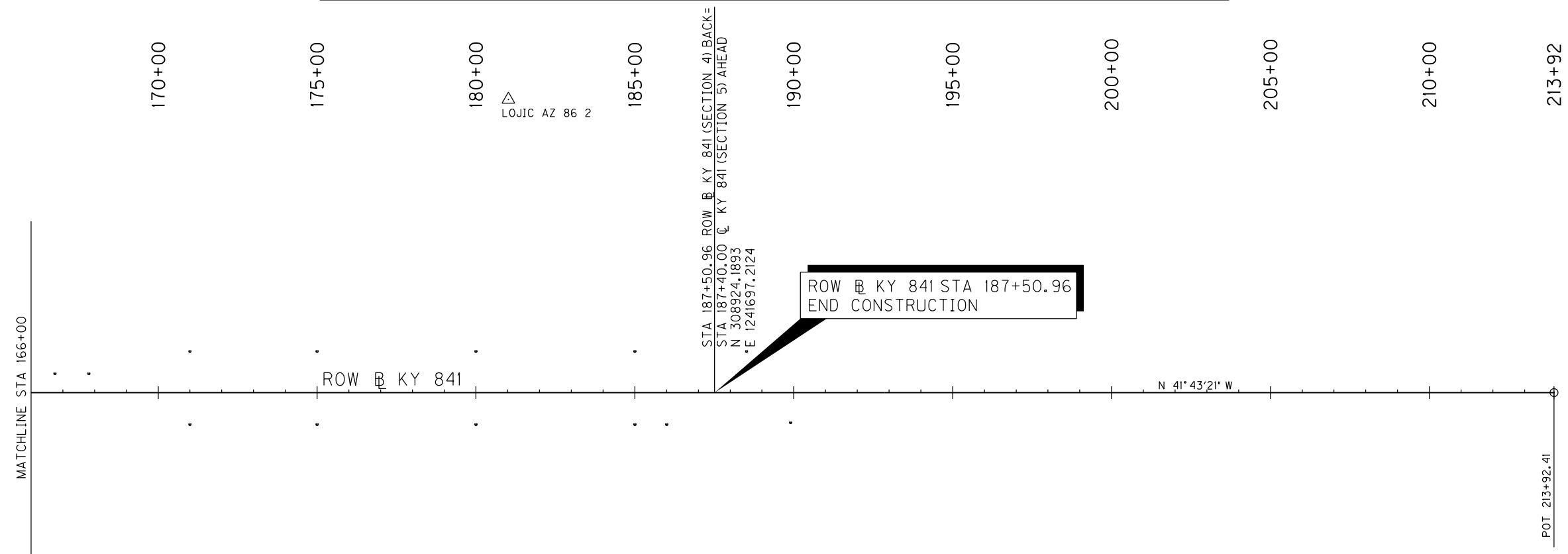
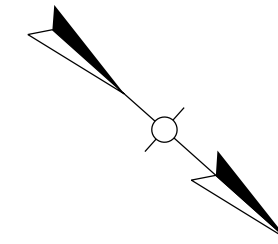
Δ
 KTC 04 03 10

Δ KTC 04 03 12

KTC 04 03 13 Δ

RIGHT OF WAY MONUMENT POINTS

STATION and OFFSET	ALIGNMENT	TYPE	DESCRIPTION	Project Coordinates = State Plane Coordinates	
				NORTH (Y)	EAST (X)
166+75.00, 60.00 Left	ROW R KY 841	1A	R/W MONUMENT	307334.8093	1243034.0300
167+82.04, 60.00 Left	ROW R KY 841	1A	R/W MONUMENT	307414.7015	1242962.7923
171+00.00, 130.00 Left	ROW R KY 841	1	R/W MONUMENT	307605.4329	1242698.9361
171+00.00, 100.00 Right	ROW R KY 841	1	R/W MONUMENT	307758.5033	1242870.6028
175+00.00, 130.00 Left	ROW R KY 841	1	R/W MONUMENT	307903.9836	1242432.7267
175+00.00, 100.00 Right	ROW R KY 841	1	R/W MONUMENT	308057.0540	1242604.3934
180+00.00, 130.00 Left	ROW R KY 841	1	R/W MONUMENT	308277.1720	1242099.9649
180+00.00, 100.00 Right	ROW R KY 841	1	R/W MONUMENT	308430.2424	1242271.6316
185+00.00, 130.00 Left	ROW R KY 841	1	R/W MONUMENT	308650.3605	1241767.2031
185+00.00, 100.00 Right	ROW R KY 841	1	R/W MONUMENT	308803.4309	1241938.8698
186+00.00, 100.00 Right	ROW R KY 841	1	R/W MONUMENT	308878.0686	1241872.3175
188+51.57, 130.00 Left	ROW R KY 841	1	R/W MONUMENT	308912.7619	1241533.2271
189+90.00, 94.33 Right	ROW R KY 841	1	R/W MONUMENT	309165.3833	1241608.5327



RIGHT OF WAY COORDINATE CONTROL POINTS

POINT	DESCRIPTION	Project Coordinates = State Plane Coordinates			STATION and OFFSET
		NORTH (Y)	EAST (X)	ELEV. (Z)	
LOJIC AZ 86 2	ROW R KY 841	307826.3000	1241440.6400	431.47	181+02.28, 922.17 Left
KTC 04 03 14	ROW R KY 841 - KDOH MON	311745.3300	1240548.2500	440.53	216+21.26, 1019.98 Right
POT	ROW R KY 841	308924.1893	1241697.2124		187+50.96
POE	ROW R KY 841	310895.7045	1239939.2670		213+92.41

FOR ROW INFORMATION ONLY

SEE ROW STRIP MAPS AND DETAIL SHEETS FOR ROW INFORMATION

KY 841 ROW COORDINATE CONTROL SHEET
STA 166+00 TO END

SCALE: 1"=200'

E-SHEET NAME:

CHECKED BY
APPROVED BY

DATE
DATE