

## What are the Effects of Lead?

### Health Effects

The Indiana Department of Environmental Management's fact sheet "Lead in Drinking Water Information for Consumers" states:

*"High levels of lead in tap water can cause health effects if the lead in the water enters the bloodstream and causes an elevated blood lead level. Short-term health effects include interference with red blood cell chemistry; delays in normal physical and mental development in babies and young children; slight deficits in attention span, hearing, and learning abilities of children; and slight increases in the blood pressure of some adults. Long-term health effects can include stroke, kidney disease, and cancer. Risk will vary, depending on the individual, the circumstances, and the amount of water consumed."*

*"Pregnant women and children six years old and under are most at risk because this is when a child's brain is developing."*

### Sources of Lead

- Contamination of lead in drinking water comes primarily from corrosion of internal plumbing materials.
- A school/child care can still have elevated levels even if their utility meets federal and state lead standards.
- The issue is typically not system-wide but specific to the fixture.
- Sampling locations may include: drinking water fountains, food prep sinks and other fixtures that children use for drinking water.

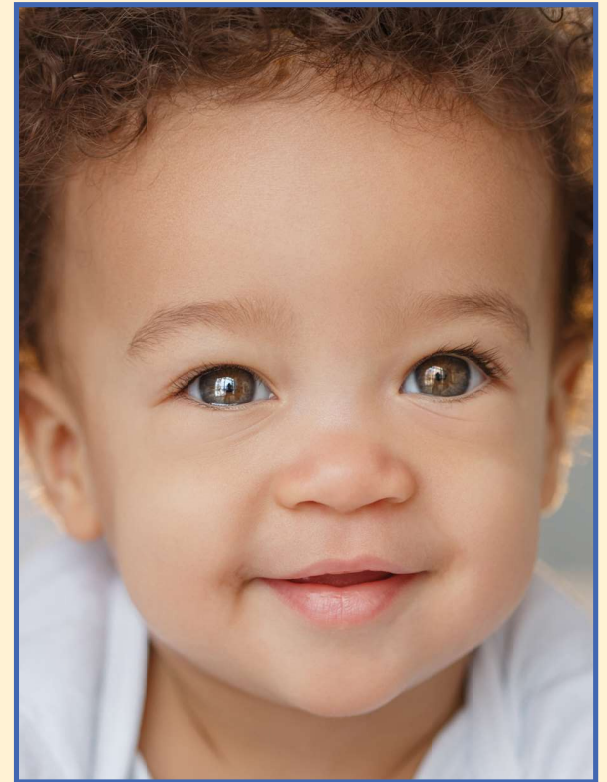


**Email:**  
IFALead@ifa.in.gov

**Phone:**  
(317) 232-3195

**Website:**  
[bit.ly/IFALead](http://bit.ly/IFALead)

## Resources for Testing Your Facility's Drinking Water



### Lead Sampling Program for Schools and Child Care Facilities

by  
the Indiana Finance Authority



*A free program to test your drinking water for lead.*

## What is the Indiana Finance Authority?

The IFA is a quasi-state agency that is tasked to oversee State-related debt issuance and provide efficient and effective financing solutions to facilitate state, local government and business investment in Indiana.

This program is funded in part by the U.S. EPA's Lead Testing in School and Child Care Program Drinking Water Grant authorized under the Water Infrastructure Improvements for the Nation Act.

### Who Can Apply?

All Indiana public K-12 schools recognized by the Indiana Department of Education and all child care facilities recognized by the Indiana Family and Social Services Administration are eligible to apply for the program.

### How to Apply?

- 1.) Go to [bit.ly/IFALeas](https://bit.ly/IFALeas) to complete the application:
- 2.) Scan this QR code using the camera app on a smart phone by pointing it at the QR code.
- 3.) Complete the enclosed application and return it in the mail.



\*62% of schools had at least one fixture with a lead exceedance (>15 ppb).

## The Program Steps



*"It was very helpful to be able to test our water and have reassurance that our water is safe for our children to be drinking."*

— Stacy E.,  
Child Care Provider

### Follow these steps for peace of mind.

**1**

Apply online using the link [bit.ly/IFALeas](https://bit.ly/IFALeas) or complete the paper application and mail it.

**2**

Once accepted into the program, attend the virtual webinar, or watch the recordings, to learn how to complete steps 3 thru 5.

**3**

Create a sample plan using our online platform and a map of your facility.

**4**

Collect water samples.

**5**

If needed, remediate fixtures that show an exceedance of lead with the personalized guidance provided to each facility.

*Financial assistance is available to [select facilities](#).*

\*2017-2018 Indiana Lead Sampling Program Final Report.

## South Perry Head Start A Case Study

South Perry Head Start is a center-based childcare facility located in Tell City, Indiana, which serves approximately 54 children, ages 3-5. They applied for the IFA Lead Sampling for School and Child Care Facilities Program in the fall of 2021 and was accepted.

After a short webinar on how to use the IFA lead sampling online platform, South Perry Head Start representatives took samples from all fixtures (six) in their center. The cost to mail the samples to the lab and to analyze the samples were provided by IFA. A few weeks later, the results of their samples revealed that one of their drinking water fountains had an exceedance for lead. Due to COVID-19, the water fountains were already offline, and South Perry Head Start immediately took steps to ensure a permanent fix could be implemented.

After discussing the results and possible solutions with the IFA, South Perry Head Start decided to replace the drinking water fountain to address the exceedance. The new fountain was tested at the start of 2022 and the results showed that the problem had been fixed and the fixture was returned to normal use.



**\*95%** of samples, on average were under 15 ppb per school.

### Questions? Let Us Know!

Email: [IFALeas@ifa.in.gov](mailto:IFALeas@ifa.in.gov)  
Phone: (317) 232-3195  
Website: [bit.ly/IFALeas](https://bit.ly/IFALeas)