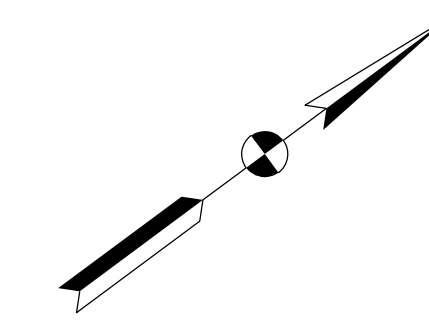


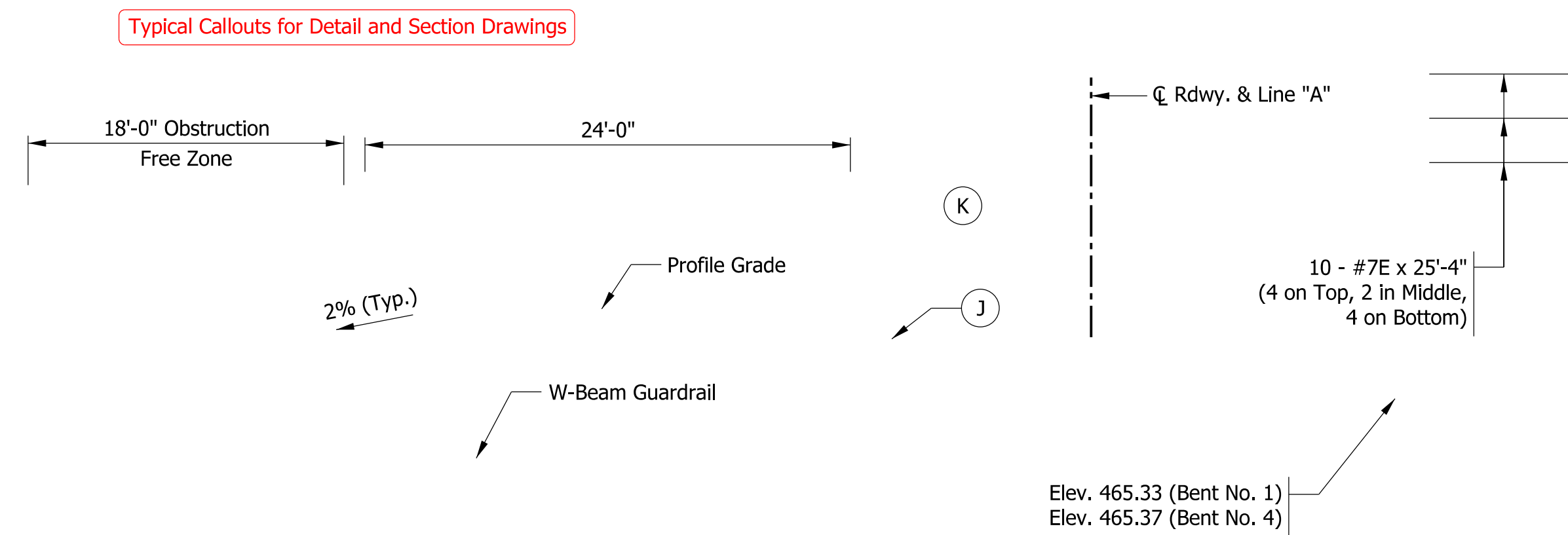
TEXT STYLE	SIZE	GUIDELINES FOR USE
30 Point Text	0.30"	Use for selected text on title sheet of plans.
18 Point Text	0.18"	Use for detail and section titles, and table titles on detail sheets.
14 Point Text	0.14"	Use for selected text on title block, view subtitles, and column headings in tables.
12 Point Text	0.12"	Use for text callouts, dimensions, and notes. Minimum size for text placed on D-size plans other than text specified under 10 Point Text.
10 Point Text	0.10"	May be used for table data.

General Notes typically found on Index Sheet. Notes shown here are for style illustration purposes only.

GENERAL NOTES
All earth shoulder, median areas, and cut and fill slopes shall be plain or mulch seeded except where sodding is specified.
The final cross sections of the grading contract will be the original cross sections of the paving contract. However, partial or complete cross sections shall be taken if necessary to determine the actual excavation quantities.
The paper relocation will be cross sectioned by the engineer before construction.
Existing asphalt pavement located outside the construction limits, between Sta. 46+14 and 49+42 shall be removed as directed.
The quantity of peat excavation shown on the plans has been estimated on the basis of theoretical cross sections by using treatment of existing fills, treatment by removal, or treatment by displacement, where each treatment applies.



NORTH ARROW
Typical length = ±2.5"
Must appear on each plan view



Text callouts, dimensions, labels:
Tahoma font
Height = 0.12" (minimum, preferred)
Use Title Case or Sentence Case as appropriate (not all caps)
No slant/italics or bold font
Dimension lines, leaders:
Arrowhead terminators
Inline leaders
Lineweight is lighter than object lines

Sentence Case Examples:
In Sentence Case, the sentence begins with a capital letter and ends with a period. Begin proper nouns with a capital letter. All other words are shown in lower case text.

Title Case Examples:
Profile Grade
Construction Limits

LEGEND:

- J Paved Shoulder
330 lbs/yd² HMA Surface, Type B on 7 in. of Compacted Aggregate, No. 53, Base
- K Mainline Full-Depth Pavement
165 lbs/yd² QC/QA HMA 2, 64 Surface 9.5 mm on 275 lbs/yd² QC/QA HMA 2, 64 Intermediate 19.0 mm on 660 lbs/yd² QC/QA HMA 2, 64 Base 25.0 mm on Subgrade Treatment Type IA

Legend symbols should match size and format of those used on the drawing.

TYPICAL FULL-DEPTH SECTION

Sta. 1441+00.00 to Sta. 1445+60.28
Sta. 1447+39.72 to Sta. 1452+00.00

Detail, section titles:
Tahoma font
Height = 0.18"
All capital letters
Underlined

Detail, section subtitles:
Tahoma font
Height = 0.14"
Title case
Not underlined

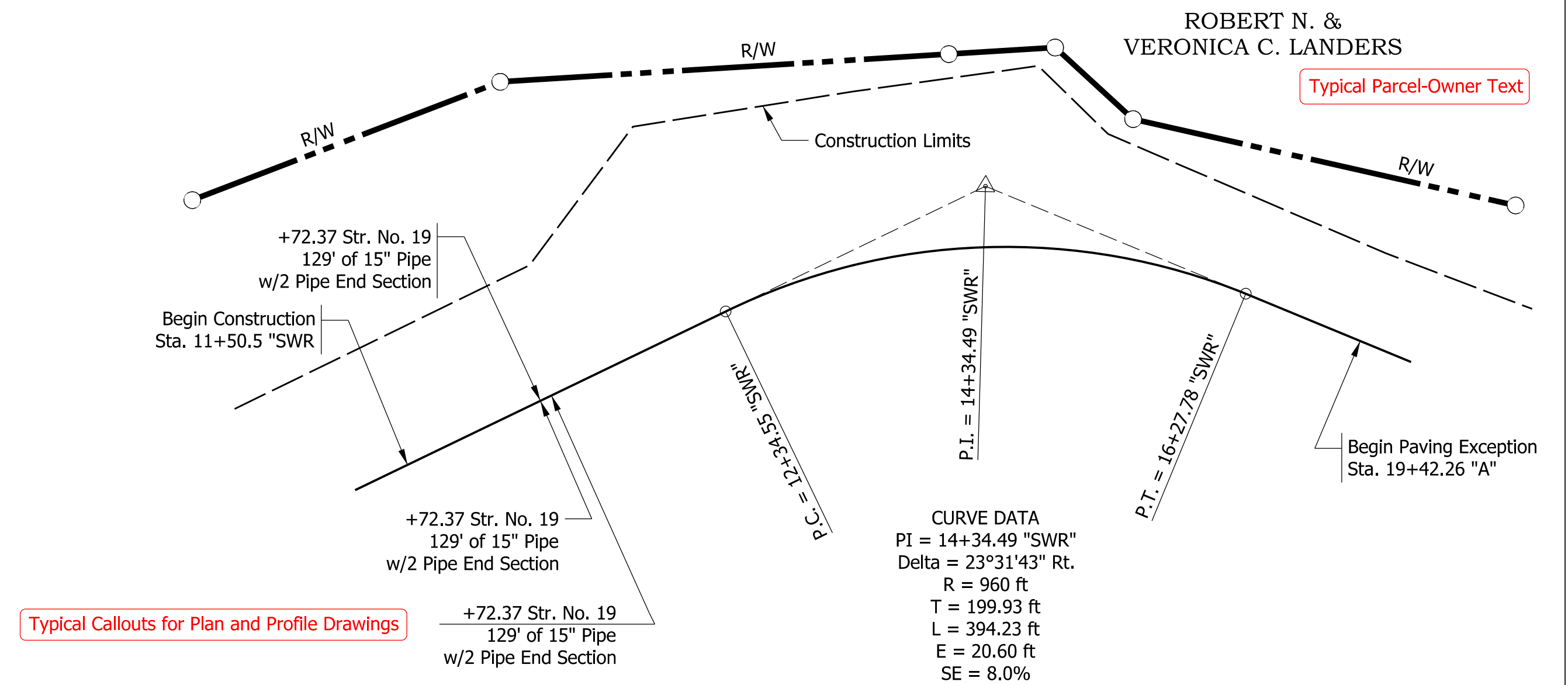
GUARDRAIL END TREATMENT DETAIL

Scale: 1/16" = 1'-0"

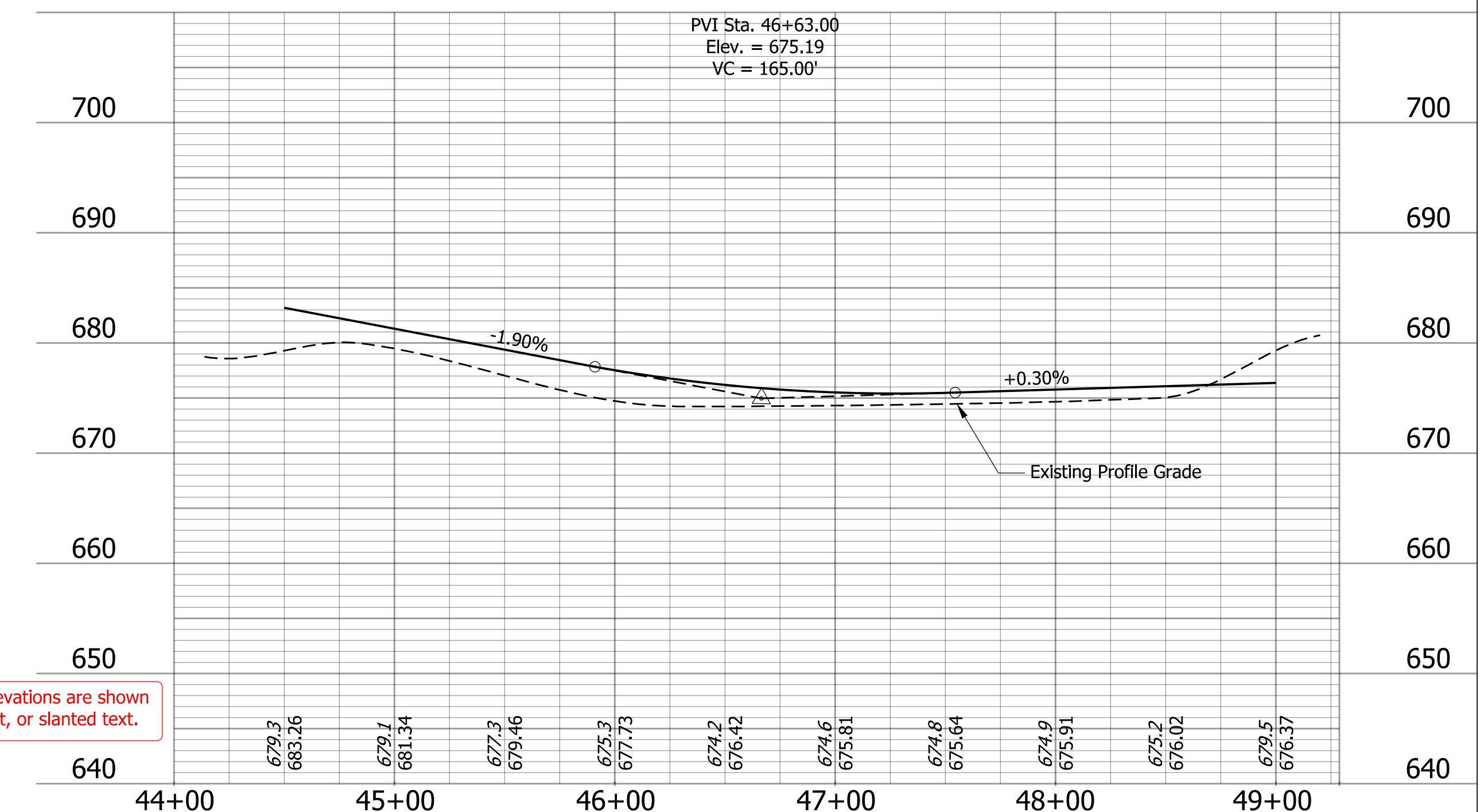
Drawing scales must be standard scales listed in Table 4.5-1 of INDOT CAD Standards Manual.

Typical Table

STRUCTURE NUMBER	LOCATION				PIPE TYPE	MANHOLE, INLET, CATCH BASIN, OR SPECIALTY STRUCTURE AND TYPE	FLOW LINE				SERVICE LIFE	SITE DESIGNATION	PH	BACKFILL METHOD	STRUCTURE BACKFILL		REVETMENT RIPRAP								
	STATION	LEFT CROSS	RIGHT	SIZE			LENGTH	SKEW	COVER	UP STREAM					DOWN STREAM	YR		TYPE	CYS	TONS					
																					IN.	LFT	FT	ELEV.	ELEV.
																					FT	FT	FT	ELEV.	ELEV.
01	18+00.0		X	15	3	Inlet E-7	260.0	0.5	1013.410	1012.910	75	n/a	7	2	18.0										
02	40+61.3		X	15	3	Pipe	40.0	0.5	1024.600	1024.380	75	n/a	7	2	2.4										
03	41+83.7		X	15	3	Pipe	84.0	1.0	1026.063	1025.180	75	n/a	7	2	5.0										
04	62+00.0		X	21	2	Manhole, C-4	175.0	4.8	1029.000	1028.450	75	n/a	7	1	175.4										



Typical Callouts for Plan and Profile Drawings



Existing elevations are shown in italic text, or slanted text.

All R/W described from Line "C". Line "C" to be constructed.

RECOMMENDED FOR APPROVAL _____ DESIGN ENGINEER DATE _____	INDIANA DEPARTMENT OF TRANSPORTATION	HORIZONTAL SCALE 1" = 50'	BRIDGE FILE
DESIGNED: _____ DRAWN: _____		VERTICAL SCALE 1" = 10'	DESIGNATION
CHECKED: _____ CHECKED: _____	CAD STANDARDS STYLE SHEET	SURVEY BOOK	SHEETS
		CONTRACT	# of ## PROJECT