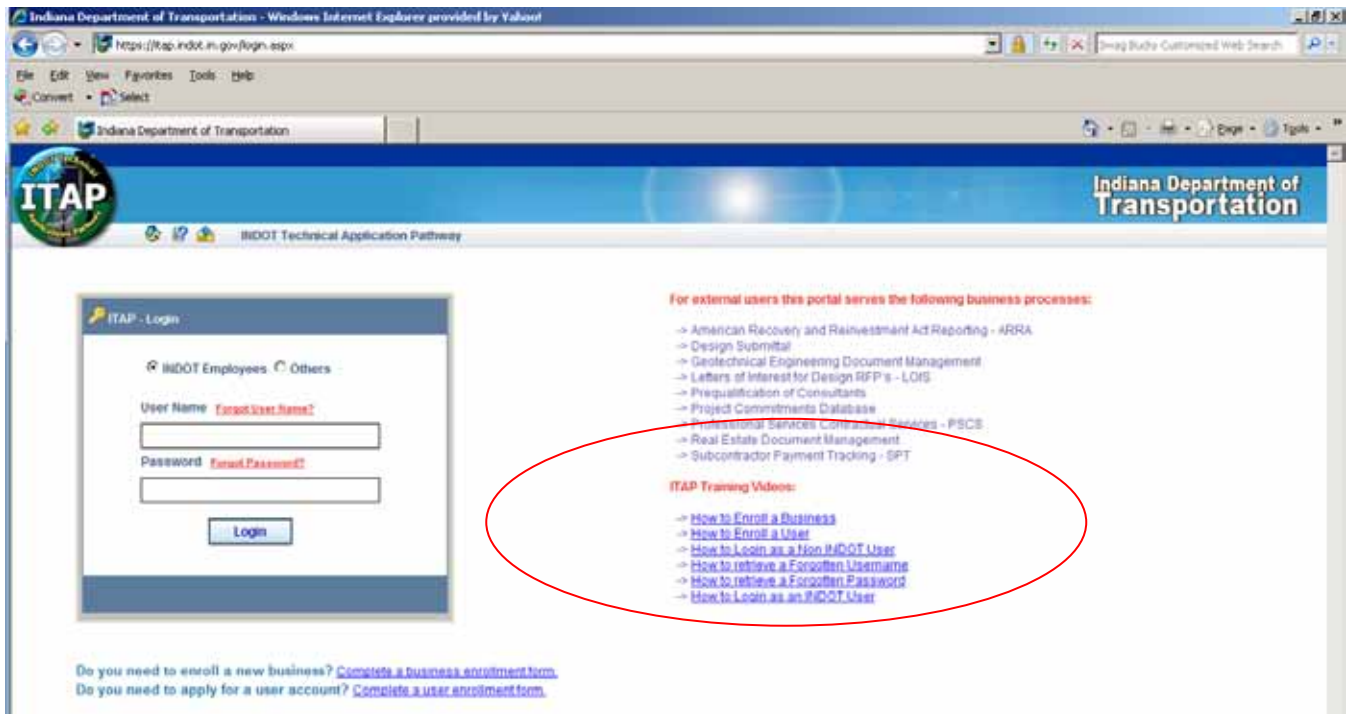


Project Commitments Database

Getting Started

The database accessed through the IWP has been taken offline.
STATE EMPLOYEES will be directed to use the INDOT Technical Applications Pathway (ITAP).
<http://itap.indot.in.gov/>

CONSULTANT USERS should use <https://itap.indot.in.gov/login.aspx>



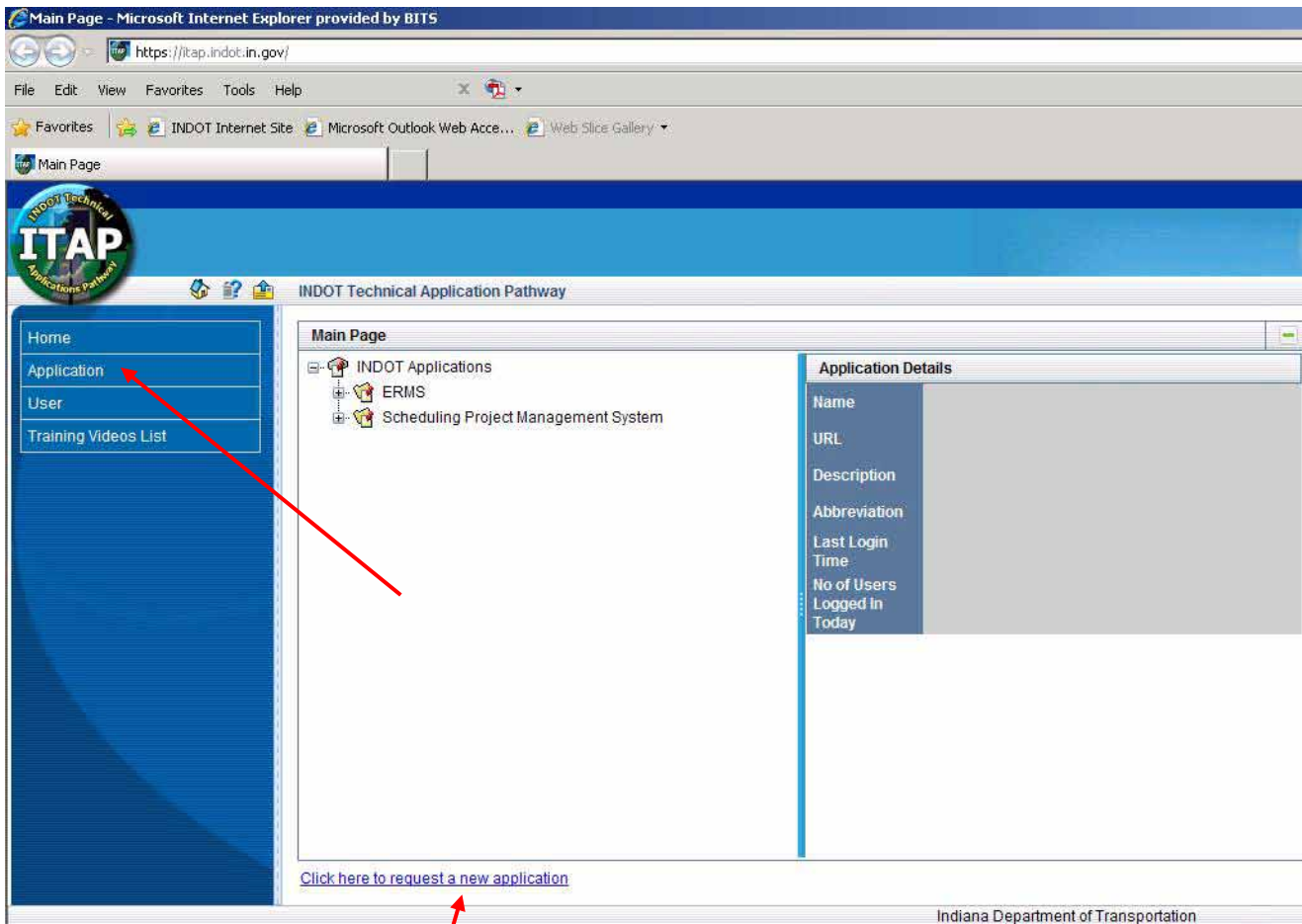
Videos for how to enroll a business, user, login, etc are all available.

- If an organization has never used ITAP before, the organization will need to enroll.
- **INDOT is already an enrolled organization**
- If the user has never used ITAP before, he/she will need to enroll.

Project Commitments Database

Getting Started

Once enrolled & logged in you will see the ITAP Menu. Hover over Application & select Request New Application from the menu.

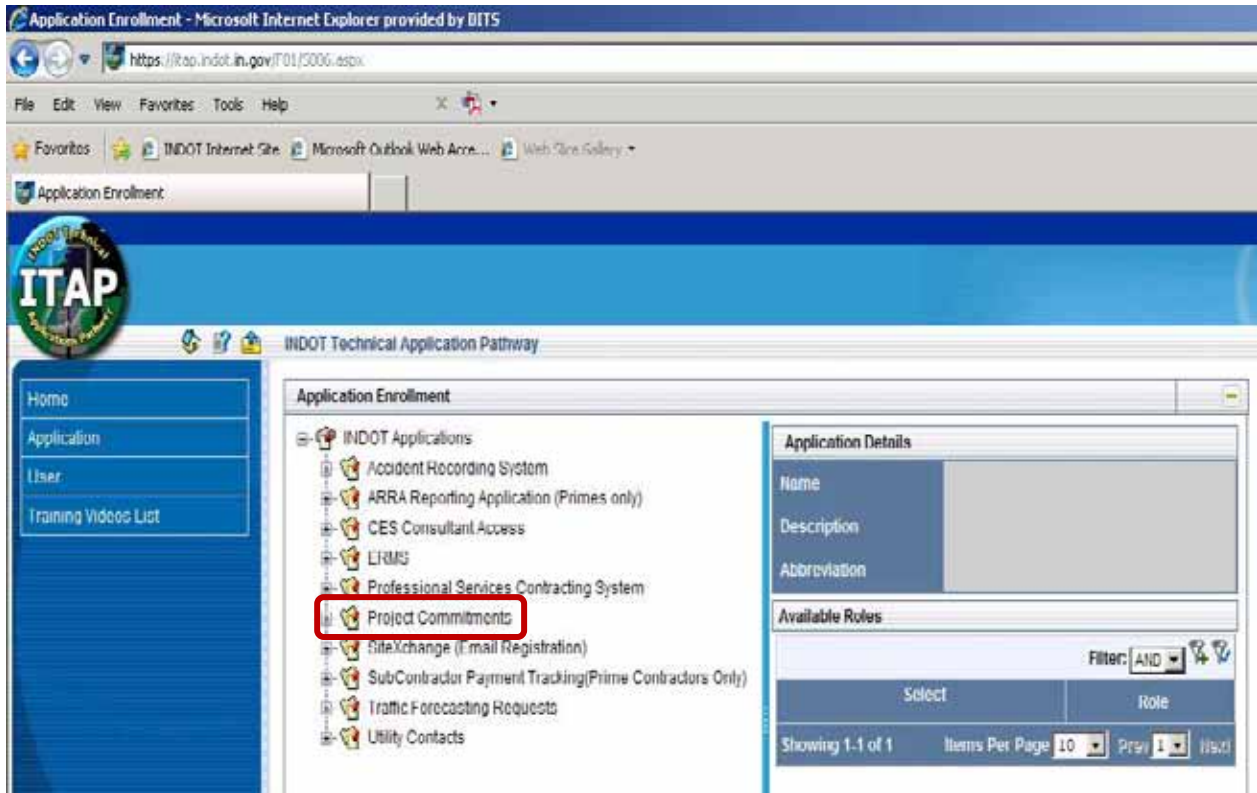


OR click here to request a new application

Project Commitments Database

Getting Started

Select Project Commitments to request access to the Project Commitments Database.



Project Commitments Database

Getting Started

Consultants may request VIEWERS (to see the database & what has been entered) and UPDATE (to make changes/corrections to what has been uploaded). INDOT employees may request all four roles.

Application Enrollment - Microsoft Internet Explorer provided by BITS

https://itap.indot.in.gov/F01/5006.aspx

File Edit View Favorites Tools Help

Application Enrollment

INDOT Technical Application Pathway

Home
Application
User
Training Videos List

Application Enrollment

- INDOT Applications
 - Accident Recording System
 - ARRA Reporting Application (Primes only)
 - CES Consultant Access
 - ERMS
 - Professional Services Contracting System
 - Project Commitments**
 - SiteXchange (Email Registration)
 - SubContractor Registration (Prime Contractors Only)
 - Traffic Forecasting Requests
 - Utility Contacts

Application Details

Name: Project Commitments

Description: The commitment database serves as a repository for agreements by an INDOT Department with an outside party, that...

Abbreviation:

Available Roles

Select	Role
<input type="checkbox"/>	Commitments_ADD
<input type="checkbox"/>	Commitments_UPDATE
<input type="checkbox"/>	Commitments_IMPORT
<input type="checkbox"/>	Commitments_VIEWERS

Showing 1-4 of 4 Items Per Page: 10 Prev 1 Next

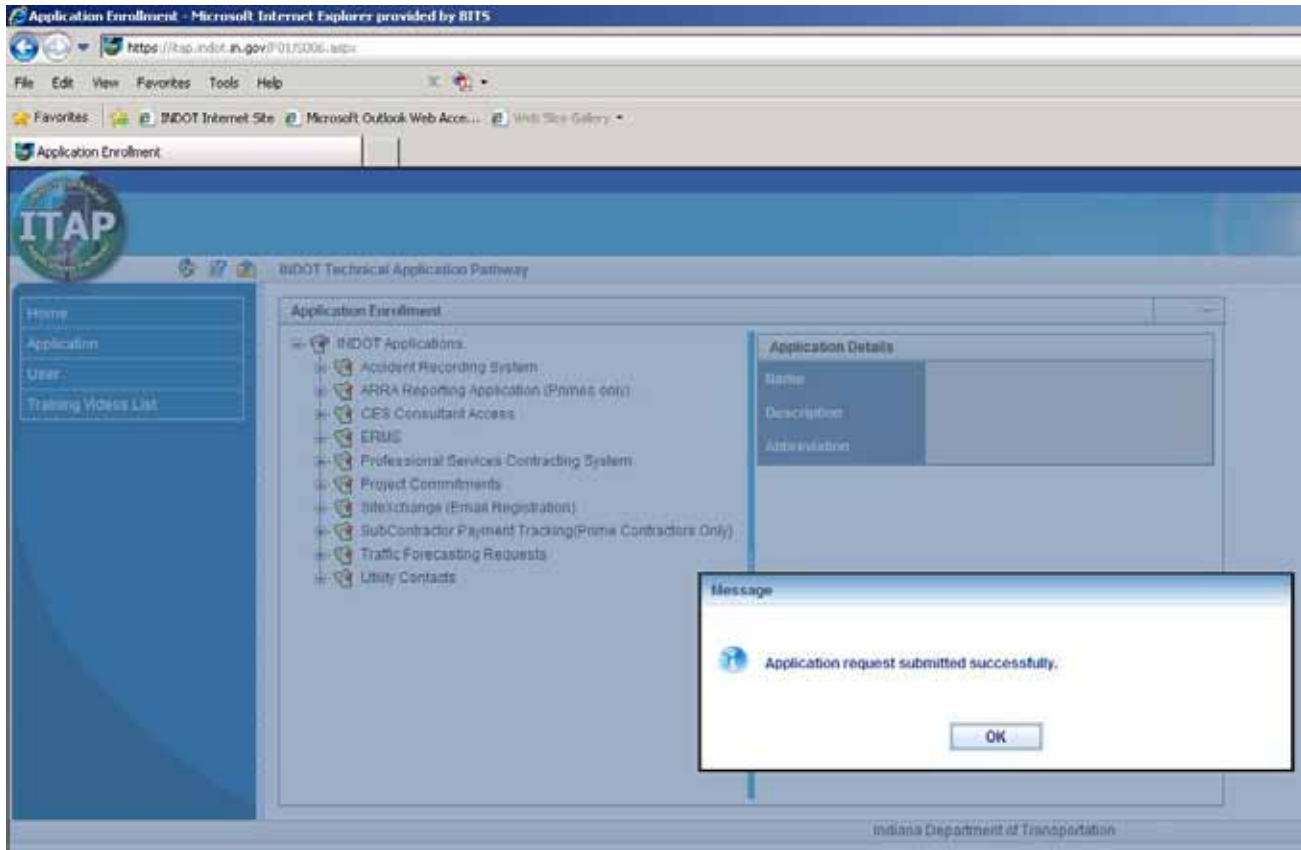
Submit

Indiana Department of Transportation

After selecting the requested roles, click "Submit"

Project Commitments Database Getting Started

- An email will be sent to supervising personnel advising them that a request has been made to access the commitments database.
- **After** supervisor approval, the request is sent to the database administrator for approval/correction.
 - If the supervisor is out for an extended period of time, this process will be delayed accordingly.



PLEASE NOTE: After the application/approval process, should a data entry error be made within the database, it may be deleted by an administrator. See contact information below.

The import/upload spreadsheet for the database and other documents are available on the INDOT Consultant web page under the heading “Project Commitments Database”

<http://www.in.gov/indot/2731.htm>

Questions? Call or e-mail Susan Hines

shines@indot.IN.gov

317-233-2050