



# Indiana Department of Transportation

---

## 2011 Self-Evaluation and Updated ADA Transition Plan

Prepared by: Latosha N. Higgins, Title VI/ADA Program Manager

1/6/2012

A quantitative and qualitative analysis of all the programs and services offered by the Indiana Department of Transportation in accordance with the Americans with Disabilities Act of 1990, as amended (ADA).



## Contents

|       |  |    |
|-------|--|----|
| I.    | Introduction.....  | 5  |
| II.   | Purpose.....   | 6  |
| III.  | INDOT’s Mission Statement .....                                      | 7  |
| IV.   | INDOT’s Responsibilities.....  | 8  |
| V.    | ADA Compliance Responsibilities .....                                | 9  |
|       | A. Commissioner .....  | 9  |
|       | B. INDOT Deputy Commissioner and Chief Legal Counsel .....           | 9  |
|       | C. Economic Opportunity and Prequalifications Division Director..... | 9  |
|       | D. Title VI/ADA Program Manager .....                                | 9  |
| VI.   | INDOT TITLE VI/ADA Interdisciplinary Team .....                      | 11 |
|       | A. History.....  | 11 |
|       | B. Mission.....  | 11 |
|       | C. Methodology and Implementation.....                               | 11 |
|       | D. Title VI Liaison Responsibilities .....                           | 11 |
|       | E. Interdisciplinary Team Members .....                              | 12 |
|       | F. Title VI/ADA Liaison Working Groups .....                         | 13 |
|       | G. District ADA Field Evaluation Team Members .....                  | 13 |
|       | H. ADA Technical Advisory Group.....                                 | 14 |
|       | I. ADA Community Advisory Council .....                              | 14 |
|       | 1. Membership .....  | 14 |
|       | 2. Purpose.....  | 15 |
|       | 3. Responsibilities .....  | 15 |
|       | 4. Meetings.....   | 15 |
| VII.  | Standards/Methodology for Evaluations.....                           | 16 |
|       | A. Overview.....   | 16 |
|       | 1. Applicable Reference Codes, Standards and Guidance.....           | 16 |
|       | 2. Self-Evaluation .....   | 17 |
|       | B. Field Evaluations .....   | 18 |
|       | 1. Inventory Methodology .....                                       | 18 |
|       | 2. Summary of Areas Surveyed and Priorities.....                     | 18 |
|       | 3. Survey .....  | 19 |
|       | 4. ADA Data Collection Items.....                                    | 20 |
|       | 5. Self Evaluation Database .....                                    | 22 |
|       | 6. Field Evaluator Duties .....                                      | 22 |
| VIII. | Summary of INDOT Self Evaluation Findings .....                      | 23 |
|       | A. ADA/504 Coordinator .....   | 23 |
|       | B. Assurances .....  | 23 |
|       | C. Public Notice of Nondiscrimination .....                          | 23 |
|       | D. Complaint Process .....   | 24 |
|       | 1. Complaint Investigation Procedures .....                          | 24 |
|       | 2. Who May File a Complaint.....                                     | 25 |
|       | 3. Timeliness of Complaints .....                                    | 25 |
|       | 4. Location/Availability of Complaint Forms.....                     | 25 |
|       | 5. How to File a Complaint? .....                                    | 26 |

|      |   |    |
|------|---|----|
| 6.   | Elements of a Complete Complaint .....                            | 26 |
| 7.   | Processing Complaints .....                                       | 27 |
| 8.   | Corrective Action .....   | 29 |
| 9.   | Pre-Investigative/Administrative Closures .....                   | 29 |
| 10.  | Appeals Procedures .....  | 30 |
| 11.  | Confidentiality .....   | 31 |
| 12.  | Records .....   | 31 |
| 13.  | Additional Filing Options .....                                   | 31 |
| E.   | Employee Relations/Human Resources .....                          | 32 |
| 1.   | Overview .....  | 32 |
| 2.   | Policies and Procedures .....                                     | 32 |
| F.   | Public Involvement .....  | 32 |
| 1.   | Overview .....  | 32 |
| 2.   | Policies and Procedures .....                                     | 32 |
| 3.   | ADA Community Advisory Council .....                              | 33 |
| 4.   | Website .....   | 33 |
| G.   | Effective Communication and/Auxiliary Aids .....                  | 33 |
| 1.   | Interpreters .....  | 33 |
| 2.   | Website Communications .....                                      | 33 |
| 3.   | Telecommunications .....  | 34 |
| H.   | Buildings and Related Site Elements .....                         | 34 |
| 1.   | Overview .....  | 34 |
| 2.   | Rest Areas .....  | 34 |
| 3.   | Policies and Procedures .....                                     | 35 |
| 4.   | Funding .....   | 35 |
| I.   | Accessibility of Pedestrian Rights-of Way-Facilities (PROW) ..... | 35 |
| IX.  | Plan and Schedule for Improvements .....                          | 39 |
| A.   | Notice of Nondiscrimination .....                                 | 39 |
| B.   | Public Rights of Way .....  | 39 |
| C.   | Buildings and Related Site Elements .....                         | 40 |
| D.   | Employment .....  | 40 |
| E.   | Public Outreach .....   | 40 |
| F.   | Communications .....  | 40 |
| X.   | Training .....  | 41 |
| XI.  | Monitoring and Status Reporting .....                             | 42 |
| A.   | Introduction .....  | 42 |
| B.   | Field Inspections and Monitoring .....                            | 42 |
| C.   | Computerized Tracking and Status Reporting .....                  | 42 |
| XII. | Appendix .....  | 43 |
| A.   | List of Acronyms .....  | 43 |
| B.   | Glossary of Terms .....   | 43 |
| C.   | Notice of Nondiscrimination .....                                 | 46 |
| D.   | Planned Urban Linear Projects (2012-2016) .....                   | 47 |
| E.   | Rest Area Map .....   | 48 |
| F.   | External Complaint of Discrimination .....                        | 49 |
| G.   | Public Involvement Survey .....                                   | 53 |

H. Location Plan for Sidewalk Curb Ramps (September 2009)..... 54  
I. Design Memorandum No. 09-33 ..... 55  
J. 2011 ADA Self Evaluation Pilot Project ..... 56

## **I. Introduction**

In August of 1992, the Indiana Department of Transportation (INDOT) completed its initial ADA Transition Plan of its facilities. The evaluation included a review of INDOT's equal employment opportunity statement and its employment practices and buildings. The 1992 transition plan did not include an evaluation of the State of Indiana's public rights of way.

In 2009, INDOT commenced a self-evaluation of its public rights of way. INDOT did not complete its self-evaluation or baseline assessment as planned because of staffing changes, which left the position of ADA Coordinator vacant for several months.

This transition plan reflects INDOT's intent to meet and exceed the minimum requirements established under the ADA and its implementation regulations.

INDOT prepared this self-evaluation and plan in accordance with Title II of the Americans with Disabilities Act of 1990, as amended (ADA) and its implementing regulations. The purpose of this self-evaluation is to examine INDOT's current facilities, policies and practices to identify and correct those items that create artificial access barriers for persons with disabilities. This transition plan outlines the recommended procedures for implementing and scheduling remedial work needed to comply with the ADA.

This plan details the methods and procedures INDOT will use to monitor its activities and facilities for compliance with the ADA. INDOT will use this plan to determine under the ADA what changes it needs to make to its programs and/or the design and construction of its facilities to ensure persons with disabilities are not excluded from programs, services and activities because the programs or facilities are inaccessible.

INDOT will periodically review and update its self-evaluation inventory and transition plan. The Title VI/ADA Program Manager and Title VI/ADA Liaisons will coordinate ADA reviews of INDOT's core program areas, districts and buildings on an annual basis. If it is determined that items need to be added or removed from INDOT's self-evaluation inventory of buildings and related elements or public rights of way, INDOT will update this transition plan as needed within the discretion of the Title VI/ADA Program Manager.

## **II. Purpose**

The purpose of this plan shall be to:

1. Comply with the administrative requirements of the ADA and Section 504 of the Rehabilitation Act of 1973; and
2. Serve as an informational document for any persons interested in INDOT's ADA compliance efforts.

### **III. INDOT's Mission Statement**

INDOT will plan, build, maintain and operate a superior transportation system enhancing safety, mobility and economic growth.

#### **IV. INDOT's Responsibilities**

INDOT has many responsibilities. Chief among these is the maintenance of all interstates, U.S. routes and state roads that are in or cross through the state, including overpasses and ramps on these roadways. INDOT is not responsible for the maintenance of county, city or town roads except in special circumstances.<sup>1</sup> Local cities, counties and towns are responsible for all other roadways that are not a state road, interstate or U.S. route.

INDOT maintains 11,300 centerline and 28,500 total lane miles. The Indiana Toll Road is 157 miles in length. Indiana currently has 14 interstate highways; they are: I-64, I-65, I-69, I-70, I-74, I-80, I-90, I-94, I-164, I-265, I-275, I-465, I-469 and I-865. INDOT is responsible for maintaining nearly 6,000 bridges across the state. Additionally, INDOT also regulates approximately 4,500 rail miles. Furthermore, INDOT regulates more than 110 public access airports and more than 560 private access airports across the state.

INDOT's responsibilities also include the implementation of construction projects that include overseeing of the building of new roadways, resurfacing of others and the preservation of existing highways. Additionally, INDOT's responsibilities include construction and maintenance of traffic control devices along these roadways, including signs and traffic signals.

INDOT has six district offices across the state that handle day-to-day operations such as construction and detours, traffic signal operations, permits and maintenance operations (for example, filling potholes and plowing snow) along with various other responsibilities.

INDOT employs approximately 3,800 employees across the state, making it one of the state's largest agencies.

---

<sup>1</sup> See Indiana code 8-23-1-16 and Indiana Code 8-23-1-17.



## V. ADA Compliance Responsibilities

### A. Commissioner

The Indiana Governor appoints INDOT's Commissioner. The Commissioner is responsible for organizing and administering INDOT.<sup>2</sup>

### B. INDOT Deputy Commissioner and Chief Legal Counsel

The Deputy Commissioner manages the Economic Opportunity and Prequalifications, Internal Affairs, Contract Administration and Legal Divisions of INDOT. As Chief Legal Counsel for the department, the Deputy Commissioner's responsibilities include: providing legal advice and assistance to the divisions and districts within the agency, investigating the legality of agency actions and validity of public complaints, drafting proposed legislation and administrative rules, researching and interpreting the law, preparing legal opinions, and attending and testifying at legislative committee hearings.

### C. Economic Opportunity and Prequalifications Division Director

The Economic Opportunity and Prequalifications Director is responsible for overseeing all aspects of INDOT's Disadvantaged Business Enterprise (DBE) certification services, contract compliance efforts and its Title VI/ADA program. The Director works toward maximizing contracting opportunities for disadvantaged businesses on INDOT contracts and ensures compliance with the Equal Employment Opportunity (EEO) provisions as required by INDOT contract and federal law. The Director's responsibilities include ensuring INDOT's compliance with the ADA and Section 504. The Director ensures that appropriate managerial and technical assistance is provided to DBE firms. The Director also oversees the prequalification of contractors and consultants. The Director is also the chair and a non-voting member of the Prequalifications Committee.

### D. Title VI/ADA Program Manager

The Title VI/ADA Program Manager is responsible for the oversight and coordination of INDOT's compliance with Title VI of the Civil Rights Act of 1964 (Title VI), the ADA and Section 504 and all related statutes, regulations, and directives. The Title VI/ADA Program Manager reports directly to the Economic Opportunity and Prequalifications Division Director and has independent access to INDOT's Chief Legal Counsel and Deputy Commissioner and Commissioner. General responsibilities of the Title VI/ADA Program Manager include:

1. Implementing INDOT's Title VI Implementation Plan and ADA Transition Plan;
2. Developing processes and procedures for the investigation of complaints filed under Title VI and the ADA;

---

<sup>2</sup> See Indiana Code 8-23-2-2.

3. Developing and implementing INDOT's Limited English Proficiency (LEP) Plan;
4. Preparing required reports;
5. Participating in the design, development and dissemination of ADA information to the public; and
6. Periodically updating INDOT's self-evaluation and transition plan.

## **VI. INDOT TITLE VI/ADA Interdisciplinary Team**

### **A. History**

In March 2011, INDOT formed its Title VI/ADA Interdisciplinary Team. The Title VI/ADA Program Manager selected members of the team based on their individual ability to solicit, collect and report on current activities within their respective divisions, districts and program areas. The selected team members also possess the authority to implement changes, if needed, to ensure INDOT's compliance with the nondiscrimination laws. INDOT held its first meeting for the team on March 3, 2011.

### **B. Mission**

The interdisciplinary team has a four-part mission, which includes the following:

- To use an interdisciplinary team approach to ensure compliance with Title VI and related nondiscrimination laws in the implementation of INDOT's programs and activities;
- To remove programmatic and architectural barriers from INDOT's programs and activities in accordance with the above-listed nondiscrimination laws;
- To ensure meaningful access to INDOT's services and programs to minorities, persons with limited English proficiencies and low-income persons; and
- To develop, continually review and update effective Title VI, ADA and LEP implementation plans for INDOT.

### **C. Methodology and Implementation**

The Title VI/ADA Program Manager shall actively solicit input and participation from INDOT division program area contacts who shall serve as Title VI/ADA Liaisons on an interdisciplinary team focused on ensuring nondiscrimination in all of INDOT's programs and activities.

### **D. Title VI Liaison Responsibilities**

The Title VI Liaisons shall:

- Foster awareness of INDOT's responsibilities under the ADA;
- Assist with conducting ADA evaluations of division program areas;
- Develop and maintain division procedures for the collection of data of participants in, and beneficiaries of INDOT programs, i.e. relocates, impacted citizens and affected communities;

- Participate in the development, revision and implementation of the self-evaluations and transition plan;
- Complete an annual division risk assessment for their respective division that identifies and prioritizes risk areas and the need to formulate mitigation strategies; and
- Prepare a yearly report of accomplishments within the division for the past year and state goals for the next year. The report shall be submitted to the Title VI/ADA Program Manager by August 30 for each federal fiscal year.

E. Interdisciplinary Team Members

| <b>Name</b>                 | <b>Program Area</b>                           | <b>Phone</b>            | <b>Email</b>   |
|-----------------------------|---|-------------------------|--|
| Adams, Scott                | Real Estate Director                          | 317-232-5000            | <a href="mailto:scadams@indot.in.gov">scadams@indot.in.gov</a>             |
| Albers, Mark                | Crawfordsville District                       | 765-361-5224            | <a href="mailto:malbers@indot.in.gov">malbers@indot.in.gov</a>             |
| Behling, K-Todd             | LaPorte District                              | 219-325-7539            | <a href="mailto:kbehling@indot.in.gov">kbehling@indot.in.gov</a>           |
| Blasdel, Audra              | Director/LPA/MPO & Grant Administration       | 317-234-5142            | <a href="mailto:ablasdel@indot.in.gov">ablasdel@indot.in.gov</a>           |
| Buckel, Larry               | Multi-Modal Planning & Policy/Transit         | 317-232-5292            | <a href="mailto:lbuckel@indot.in.gov">lbuckel@indot.in.gov</a>             |
| Cales, Robert               | Legal/Contract Administration Director        | 317-233-4794            | <a href="mailto:rcales@indot.in.gov">rcales@indot.in.gov</a>               |
| Clark, Jr., Rickie          | Public Hearings Manager                       | 317-232-6601            | <a href="mailto:Rclark@indot.in.gov">Rclark@indot.in.gov</a>               |
| Giller, Teresa              | Legal/Attorney                                | 317-232-6734            | <a href="mailto:tgiller@indot.in.gov">tgiller@indot.in.gov</a>             |
| Jittjumnongk, Brandi        | Recruitment Consultant                        | 812-895-7305            | <a href="mailto:bjittjumnongk@indot.in.gov">bjittjumnongk@indot.in.gov</a> |
| Lawrence, Ben               | Environmental Services                        | 317-233-2093            | <a href="mailto:blawrence@indot.in.gov">blawrence@indot.in.gov</a>         |
| McGrannahan-Roberson, Linda | Communications Director                       | 317-234-7175            | <a href="mailto:lmcgrannahan@indot.in.gov">lmcgrannahan@indot.in.gov</a>   |
| Miller, Mark                | Operations/Construction Mgmt & Distr. Support | 317-232-5456            | <a href="mailto:mmiller@indot.in.gov">mmiller@indot.in.gov</a>             |
| Myers, Dwane                | Greenfield District                           | 317-467-3465            | <a href="mailto:dmyers@indot.in.gov">dmyers@indot.in.gov</a>               |
| Orcutt, Wayne               | Fort Wayne District                           | 260-969-8204            | <a href="mailto:worcutt@indot.in.gov">worcutt@indot.in.gov</a>             |
| Partridge, Barry            | Research & Development/JTRP                   | 765-463-1521<br>ext 251 | <a href="mailto:bpartridge@indot.in.gov">bpartridge@indot.in.gov</a>       |
| Stoops, Ernie               | Vincennes District                            | 812-895-7390            | <a href="mailto:estoops@indot.in.gov">estoops@indot.in.gov</a>             |
| Ude, Jim                    | Seymour District                              | 812-524-3729            | <a href="mailto:jude@indot.in.gov">jude@indot.in.gov</a>                   |
| Wright, John                | Highway Design & Technical Support            | 317-232-5147            | <a href="mailto:jwright@indot.in.gov">jwright@indot.in.gov</a>             |

F. Title VI/ADA Liaison Working Groups

The working groups are subcommittees created as needed by the members of the Title VI/ADA interdisciplinary group to assist with the actual implementation of INDOT’s Title VI/ADA Program goals within their respective districts, divisions and departments.

The working group members may also participate in resolving Title VI, ADA and Section 504 issues. Additionally, they may occasionally complete Title VI and ADA surveys for their respective program areas and projects.

G. District ADA Field Evaluation Team Members

| <b>District</b> | <b>Title VI/ADA Liaison</b> | <b>Field Evaluation Team Members</b>  |
|-----------------|-----------------------------|---|
| Crawfordsville  | Albers, Mark                | Baker, Jill<br>Edwards, Jessica<br>Krout, Justin<br>Libka, Lisa<br>Morris, Jeff<br>Thompson, Steve  |
| Greenfield      | Myers, Dwane                | Beeler, Steve<br>Browder, Rick<br>Gill, Rob<br>Reese, Jim<br>Wagoner, Carol<br>Wilmot, Mike   |
| Fort Wayne      | Orcutt, Wayne               | Ballge, Duane<br>Burchett, Bobby<br>Caldwell, Bill<br>Chilcutt, Roger<br>Collins, Tom<br>Denton, Mike<br>Elliot, Brian<br>Firestone, Jim<br>Goodrich, Gary<br>Gillum, Kevin<br>Hamilton, Robert<br>Heirs, Justin<br>McCann, Jerry<br>Neidbalski, Veronica<br>Simpson, Tim<br>Till, Jim<br>Williams, Pat<br>Wright, Frank<br>Zan, Rashidah |

| <b>District</b> | <b>Title VI/ADA Liaison</b> | <b>Field Evaluation Team Members</b>   |
|-----------------|-----------------------------|--|
| LaPorte         | Behling, K-Todd             | Behling, K-Todd<br>Meserve, Kristie<br>Mooney, Kristie   |
| Seymour         | Ude, Jim                    | Allman, Craig<br>Culbertson, James<br>Lowther, James<br>Rayl, Mike<br>Rhoads, Matthew<br>Schneider, Chase<br>Unger, Ed<br>White, Steve |
| Vincennes       | Stoops, Ernie               | Cummings, Kelly<br>Smith, Brittney   |

#### H. ADA Technical Advisory Group

The Title VI/ADA Program Manager developed INDOT’s self-evaluation with the assistance of an internal ADA Technical Advisory Group and INDOT’s Title VI/ADA Liaisons. The technical advisory group consists of the following members: John Wright, Director of Highway and Technical Support; Russ Brittain, Supervisor Roadway Engineer Review; and Richard Vancleave, Supervisor Roadway Standards and Policy. The technical advisory group also meets as needed to review and address technical questions regarding the ADA issues that arise on INDOT projects.

#### I. ADA Community Advisory Council

Effective 2012, INDOT shall form a statewide ADA Community Advisory Council composed of the Title VI/ADA Program Manager, as well as key INDOT staff, individuals with disabilities, disability advocates and those who provide services to persons with disabilities.

##### 1. Membership

Membership shall be representative of different disability groups including: groups representing physical, sensory, developmental and cognitive disabilities. The Title VI/ADA Program Manager shall be responsible for soliciting members throughout the state. The ADA Community Advisory Council shall consist of 12-15 members.

Members shall serve no more than two consecutive two-year terms.

## 2. Purpose

It shall be the mission of the ADA Community Advisory Council to:

- Provide public input to INDOT to help ensure INDOT's compliance with the ADA;
- Increase awareness of the challenges faced by persons with disabilities; and
- Brainstorm and discuss possible solutions to problems of accessibility in the community.

## 3. Responsibilities

The ADA Community Advisory Council shall assist INDOT by providing input regarding the development and implementation of INDOT's transition plan. Furthermore, the ADA Community Advisory Council shall provide information to INDOT regarding specific concerns of the disability community regarding the State of Indiana's roadways and facilities that are within INDOT's jurisdiction.

## 4. Meetings

This shall be an on-going group that shall hold meetings at least four times a year. The Title VI/ADA Program Manager shall schedule all meetings and keep the minutes or notes.

## VII. Standards/Methodology for Evaluations

### A. Overview

#### 1. Applicable Reference Codes, Standards and Guidance

##### a) Public Rights of Way

- Indiana Code
- INDOT Design Manual
- INDOT Standard Specifications (2012)
- General Instructions for Field Employees (2009 Interim Edition)

##### b) Buildings and Related Site Elements

- INDOT's Facility Management Guidelines

##### c) Communications (includes public involvement)

- Indiana's Section 508 Web Accessibility Coding Solutions and Requirements<sup>3</sup>
- Section 508 of the Rehabilitation Act of 1973 as amended by 1998 the Work Force Investment Act (section 1194.22 and its subsequent amendments) as minimum requirements for web accessibility
- INDOT Public Involvement Procedures Manual (2009)
- Environmental Services Procedural Manual for preparing environmental documents (2008)
- INDOT Traffic Noise Policy Manual (2007)
- Federal Highway Administration (FHWA) Public Involvement Techniques for Transportation Decision-Making Document (1996)
- FHWA Environmental Justice Guidance Document

---

<sup>3</sup> See [http://www.in.gov/webmasters/accessibility/coding\\_solutions\\_2-3-03.html](http://www.in.gov/webmasters/accessibility/coding_solutions_2-3-03.html).



## 2. Self-Evaluation

INDOT's completed self-evaluation shall include an analysis of all its programs and services, including communications, employment and its facilities.

INDOT plans to complete its ADA self-evaluation in five phases.

- Phase I Internal Program Evaluations

In March 2011, INDOT held a kick-off meeting with several key members of its senior management staff and their representatives to discuss the importance of completing its self-evaluation baseline assessment and transition plan by December 2011. In April 2011, INDOT distributed a baseline assessment to its major program areas regarding their current activities to assess current compliance activities. The Title VI/ADA Program Manager reviewed each program area assessment and met with each respective program area to discuss options for improving INDOT's compliance efforts.

- Phase II Field Evaluations

In August 2011, INDOT offered two training sessions to its district ADA liaisons regarding the proper method to conduct a field evaluation. Each of INDOT's six districts participated in the training to ensure INDOT maintains a sufficient number of people properly trained to conduct ADA field evaluations.

INDOT initiated its field evaluations with a pilot project with a limited scope. The scope of the pilot project included first identifying the total number of INDOT new construction, reconstruction and spot improvements let from January 1, 2000 through December 31, 2010. INDOT did not include resurfacing projects in the scope because ADA issues seldom arise during resurfacing projects<sup>4</sup>.

With the support of INDOT's Executive Office, INDOT's Districts began the field sampling in September 2011. The Title VI/ADA Manager asked each district to complete field evaluations of at least 30 intersections by October 30, 2011. During the pilot project, INDOT's six districts completed 309 evaluations of US and State routes.

---

<sup>4</sup> Pursuant to an agreement between INDOT and the Indiana Division of the FHWA dated December 14, 2009, the Indiana Division of the FHWA has not required INDOT to implement ADA upgrades to projects where surface treatments thickness is  $\frac{3}{4}$  inch or less. The agreement revised Indiana Design Manual section 51-1.08 and became effective March 3, 2010. See INDOT Design Memorandum No. 09-33 available at: <http://www.in.gov/dot/div/contracts/standards/memos/2009/0933-pc.pdf>.

During the pilot project, the Title VI/ADA Program Manager provided ongoing training and technical assistance with the aid of the ADA Technical Advisory Group on as needed basis to the district field evaluators.

- Phase III Review of Subrecipients for ADA Compliance via Annual Pre-Award Certification

Effective January 1, 2012, INDOT will require LPAs to complete the INDOT Pre-Award Annual Certification and Assurance (Pre-Award Certification) by June 30 for the following federal fiscal year (FFY) (October 1 –September 30).

- Phase IV Review and Map Upcoming Urban Projects Through 2016
- Phase V Summary of Baseline Compliance

## B. Field Evaluations

### 1. Inventory Methodology

The purpose of the field evaluation of INDOT's facilities is to create a baseline of existing pedestrian facilities within the state.

### 2. Summary of Areas Surveyed and Priorities

#### a) Roadway Segments

##### Level 1 (High Priority)

- Major roadways and intersections along arterials and thoroughfares with a minimum 80-foot wide right of way; and
- Intersections and roadway segments serving Level 1 buildings such as:
  - State owned buildings
  - Schools (approximately ¼ mile radius for the main streets)
  - Hospitals, health clinics and health centers
  - Public housing and homeless shelters, including senior facilities and rehabilitation facilities
  - Law enforcement facilities
  - Transportation hubs (bus lines and transit stations)

- State parks
- Prisons

#### Level 2 (Intermediate Priority)

- Streets with a minimum 60-foot wide right of way and other roadways and intersections along these highways; and
- Intersections and roadway segments serving Level 2 buildings such as:
  - Shopping malls, supermarket and strip retail centers
  - Major employments sites
  - Housing complexes, including apartments

#### Level 3 (Low Priority)

- Single family residential areas;
- Industrial areas; and
- Any area not classified as Priority Level 1 or 2

#### b) Buildings and Related Site Elements

INDOT conducts ongoing building assessments; however, this report shall not include buildings that do not provide programs, services or activities to the public and are restricted to authorized personnel.

### 3. Survey

A completed field survey shall consist of: (1) a detailed review of the project plan and design; (2) an onsite visit to the location; and (3) a team of trained ADA field evaluators using a detailed survey questionnaire to capture the measurements of specific elements to evaluate ADA compliance in accordance with the applicable design standards.

Currently, the surveys are manually completed and the information and findings entered into INDOT's computerized Work Management System (WMS). WMS is INDOT's official inventory system used to record and monitor all of INDOT's assets exclusive of its fleet vehicles. INDOT is in the process of developing an application that will allow field evaluators to enter data directly into WMS.

The surveys and the database document barriers identified during the pilot project form a random sampling of projects. As INDOT remedies the ADA deficiencies identified during the self-evaluation, INDOT will update WMS. Additionally, INDOT's Title VI/ADA Program Manager will periodically update INDOT's transition plan to include information showing INDOT's compliance efforts.

During the pilot project, the ADA field evaluation team members in each district evaluated each facility under the requirements of the 2010 ADA standards and where the 2010 ADA standards were silent, as a best practice, they used the Proposed Accessibility Guidelines for pedestrian facilities in the Public Right of Way (PROWAG).<sup>5</sup> INDOT plans to use the same standard of review for the remainder of its field evaluations unless the standards or law changes.

#### 4. ADA Data Collection Items

The ADA field evaluation teams collected and analyzed the following data during the pilot project:

##### a) Roadway Segments

###### Crosswalks

- Whether crosswalks are present at any or all crossings
- If present, the width, type, islands and access for persons with disabilities

###### Curb Ramps

- Whether curb ramps are present at any of the corners within the intersection
- Whether truncated domes are present
- If truncated domes are present, the dome location, size, type and color
- Slopes (Running, Cross, Side, Transition)
- Whether or not the surface is slip resistant
- Width

---

<sup>5</sup> Currently, the PROWAG is in the rulemaking stage; however, FHWA has indicated that that the PROWAG may be used as a best practice for areas not fully addressed by the ADAAG. The PROWAG is not the standard. It cannot become the standard until it is adopted by the U.S. Department of Justice and the U.S. Department of Transportation. The PROWAG is consistent with the ADA's requirement that all new facilities (and altered facilities to the maximum extent feasible) be designed and constructed to be accessible to and useable by people with disabilities

### Directional Corner of Intersection

- NE, SE, SW, NW (assigned within the nearest 45 degrees)

### Intersection Geometry

- Whether the intersection is a standard right angle, T-shaped, Y-shaped, skewed or any other irregular geometry
- Whether there are pedestrian islands and right turn lanes

### Islands

- If present, whether there are curb ramps and push buttons

### Obstructions and Obstacles

- Whether there are abrupt changes in sidewalk level of greater than ½ inch, paving obstructions or accessibility obstacles immediately adjacent to the corner. Evaluators will record information regarding any obstacles near a corner (e.g. utility pole, traffic light pole, drain inlet, fire hydrant, street furniture and newsstands.)

### Pedestrian Signals

- Whether visual and accessible pedestrian signals are present
- If present, the type, size, height and location of the actuator buttons
- The location parameters
- Whether the pedestrian push button is parallel to the crosswalk alignment

### Sidewalks

- Whether a sidewalk leading to and from the curb is present
- If present, the paved sidewalk width at the intersection

### b) Buildings and Related Site Elements

### Accessible Approach and Entrance

- Whether the route of travel (exterior path that a person with a disability must take to access the good and services) is accessible

- Whether the parking and drop off areas are accessible

#### 5. Self Evaluation Database

INDOT self-evaluation data shall be maintained using INDOT's official inventory.

#### 6. Field Evaluator Duties

The basic duties:

- For Sidewalks and Intersections
  - Travel to the assigned project area
  - Visually inspect, measure and record observations using a calibrated level (digital or electronic), a 25-50 foot tape measure and standard data collection form
  - Report to the Title VI/ADA Program Manager at regular intervals or when the assigned locations were completed, input collected data into database, return completed data forms and obtain new assignments
  - Exercise sound discretion and judgment consistent with the ADA and INDOT's policies when encountering unusual circumstances

## VIII. Summary of INDOT Self Evaluation Findings

In 2011, INDOT developed an assessment tool to monitor its core program areas and assist the Title VI/ADA Program Manager and Directors in reporting their respective division compliance efforts.

As part of the assessment process, all core division and program areas submit an annual report to the Title VI/ADA Program Manager to be used as an assessment tool to determine whether the division/program area is in compliance with the ADA and to ascertain instances where the Title VI/ADA Program Manager may provide training and technical assistance to help the division/program area achieve its goals and maintain compliance. Furthermore, the Title VI/ADA Program Manager periodically reviews the data collection procedures for each division/program area to ensure compliance with the ADA. Title VI/ADA Liaisons prepare and submit their respective reports annually by August 30.

A summary of INDOT's findings appears below. The Plan and Schedule for Improvements are outline in Section IX of this plan.

### A. ADA/504 Coordinator

The ADA/504 Coordinator is Latosha N. Higgins, Title VI/ADA Program Manager. The ADA/504 Coordinator office is located at 100 N. Senate Avenue, N750, Indianapolis, IN 46204.

### B. Assurances

INDOT's ADA assurances are included in its Title VI Assurances. Under its Title VI Assurances, INDOT guarantees that it will comply with Title VI of the Civil Rights Act of 1964 and all related laws such that no person in the United States shall on the grounds of race, color, sex, age, national origin, disability, or income status be excluded from participation in, be denied the benefits of, or be otherwise subjected to discrimination under any program or activity for which INDOT receives federal financial assistance from the United States Department of Transportation (DOT) including the FHWA. Additionally, INDOT's contracts and agreements with subrecipients include a statement of written assurance by the subrecipient that it will comply with the law and not discriminate based on disability in any of its programs, services, activities, or benefits extended to participants.

To ensure subrecipients are aware of their duty to comply with Section 504, INDOT offers training and workshops throughout the state, includes relevant information on its website and conducts periodic reviews of its subrecipients.

### C. Public Notice of Nondiscrimination

In 2011, INDOT updated its Notice of Nondiscrimination under the ADA and Section 504 to reflect a change in the Commissioner and Title VI/ADA Coordinator. It is INDOT's policy to update its notice of nondiscrimination if there is a change in the Commissioner, Title

VI/ADA Program Manager or ADA/504 Coordinator. INDOT's notice of nondiscrimination is available on its website at: <http://www.in.gov/indot/files/NondiscriminationNotice.pdf>.

Furthermore, INDOT provides a copy of its notice of nondiscrimination to all new hires. INDOT also distributes copies of the nondiscrimination notice at recruitment fairs, to scholarship applicants and to anyone who requests a copy. INDOT is constantly exploring new and varied ways to disseminate its notice of nondiscrimination.

#### D. Complaint Process

INDOT adopted and implemented a revised complaint process in 2011. The complaint form and a brief description of the complaint procedures are available online and in print. INDOT's complaint process includes due process protections for the complainant and the respondent and provides for prompt and equitable resolution of complaints.

Under its complaint policy, INDOT will promptly investigate all properly submitted complaints of alleged discrimination. INDOT will also attempt to resolve such complaints and take corrective action upon a finding of a substantiated complaint. INDOT will submit its final investigative report to FHWA within 60 days of receiving a complaint. INDOT's complaint process provides a procedure for appeal of all unsubstantiated claims of discrimination.

##### 1. Complaint Investigation Procedures

The Title VI/ADA Program Manager will make a determination to accept, reject or refer to the appropriate federal/state agency a complaint within seven calendar days of its receipt. INDOT will determine whether the person or entity purportedly engaged in the alleged discriminatory act is an INDOT subrecipient (the legal entity to which a subaward is made and which is accountable to INDOT for the use of the funds provided). If the complaint does not specifically mention that the alleged discriminatory actor is an INDOT subrecipient, INDOT may presume so in deciding whether to accept the complaint for further processing.

These procedures apply to all complaints filed under Title VI of the Civil Rights Act of 1964 and its related statutes, regulations and directives, the ADA and Section 504. These procedures do not affect the right of the Complainant to file formal complaints with other state or federal agencies or to seek private counsel for complaints alleging discrimination. These procedures are part of an administrative process that does not provide for remedies that include punitive damages or compensatory remuneration for the Complainant.

INDOT will make every effort to facilitate a voluntary early resolution of complaints at the lowest level possible. The option of informal resolution may be used at any stage of the process. The Title VI/ADA Program Manager will make every effort to pursue a resolution of the complaint.



The Title VI/ADA Program Manager will refer all complaints against INDOT to the FHWA or the appropriate Federal agency.

## 2. Who May File a Complaint

Any person who believes that he or she has been excluded from participation in, denied the benefits of or otherwise subjected to discrimination under any INDOT service, program or activity whether federally funded or not, based on their race, color, national origin, gender, age, disability, religion, ancestry, income status or Limited English Proficiency may file a complaint. A complaint may also be filed by a representative on behalf of such a person.

## 3. Timeliness of Complaints

For a complaint against INDOT or a subrecipient to be considered timely, it must be filed within 180 calendar days after the alleged incident has occurred. INDOT may waive the 180-day time limit for good cause at its discretion.

The file date of a complaint is the earlier of the postmark or date received by INDOT.

INDOT will determine on a case-by-case basis whether to waive the time limit for good cause. Good cause for a waiver shall include the following instances:

- Lack of Knowledge
  - INDOT may waive the time limit in situations where the person on whose behalf the complaint was filed did not know of and could not have reasonably known of the violation during the 180-day time limit. The complaint must be filed within 60 days of complainant becoming knowledgeable of the violation.
- Incapacitation
  - INDOT may also waive the time limit in situations where the person on whose behalf the complaint was filed was incapacitated because of illness or other incapacitating circumstances. The Complainant must provide independent documentation of the purported incapacitation. The complaint must be filed within 60 days after the period of incapacity ends.

## 4. Location/Availability of Complaint Forms

INDOT will make complaint forms available online via the INDOT website, in all district offices and at all rest parks. Additionally, persons may contact the Title VI/ADA Program Manager to request a copy of the complaint form via email, facsimile or United States mail. INDOT's Title VI/ADA Program Manager shall provide copies of its complaint form in alternative formats upon request.

## 5. How to File a Complaint?

A complainant may file his or her complaint by mail, facsimile, or email. Any person with a disability may request to file his or her complaint using an alternative format. INDOT will acknowledge complaints received by fax or email and will process them once INDOT establishes the identity of the Complainant. Complainants must mail a signed, original copy of the fax or email transmittal to INDOT to begin the complaint process. INDOT does not require a Complainant to use the INDOT complaint form for submitting his or her complaint.

Title VI complaints should be directed to:

Latosha N. Higgins  
Title VI/ADA Program Manager  
Economic Opportunity Division  
Indiana Department of Transportation  
100 N. Senate, Room N750  
Indianapolis, IN 46204  
[Lhiggins@indot.in.gov](mailto:Lhiggins@indot.in.gov)  
(317) 234-6142 (Phone)  
(317) 233-0891 (Facsimile)

## 6. Elements of a Complete Complaint

A complete complaint is written and signed. INDOT must reduce verbal complaints to writing and provide them to the Complainant for confirmation, review and signature before processing. The complaint form is available for download from the INDOT website at: <http://www.in.gov/indot/2750.htm>.

Additionally, a complete complaint is filed within 180 calendar days of the alleged discriminatory act(s) and includes at minimum the following information:

- The full name and address of the Complainant;
- The full name and address of the Respondent (the individual, agency, department or program that allegedly discriminated against Complainant); and
- A description of the alleged discriminatory act(s) that violated Title VI (i.e., an act of intentional discrimination or one that has the effect of discriminating on the basis of race, color, national origin, sex, age or disability) and the date of occurrence.

The following items are not acceptable as a complete complaint unless accompanied by a signed cover letter that specifically requests INDOT take action concerning the allegations:

- Anonymous complaints
- Inquiries seeking advice or information
- Newspaper articles
- Courtesy copies of court pleadings
- Courtesy copies of complaints addressed to other agencies
- Courtesy copies of internal grievances
- Oral complaints

The Title VI/ADA Program Manager shall notify the Complainant in writing if his or her complaint is incomplete and allot 15 calendar days for the Complainant to respond and provide the supplemental information needed to complete the complaint.

#### 7. Processing Complaints

The Title VI/ADA Program Manager will process all complaints. The Title VI/ADA Program Manager is responsible for:

1. Maintaining a log of all complaints. The Title VI/ADA Program Manager will note the complaint in the log by sequential case number based on the year, month and order in which INDOT received the complaint. For example, if INDOT received its first complaint on March 4, 2011, the case number would be 2011-03-01.
2. Acknowledging receipt of the complaint and informing the Complainant of the action taken or proposed action to be taken to process the complaint in the form of an acknowledgement letter. The acknowledgement letter shall include a restatement of the complaint, brief statement of INDOT's jurisdiction over the subrecipient, and contact information for the investigator assigned to conduct the investigation.
3. Providing written notice of the complaint to the FHWA within 10 working days of receipt of the complaint.
4. Forwarding a notice via certified mail to the Respondent informing them of the allegations, requesting a position statement and providing the name and telephone number of the Title VI Program staff person assigned to investigate the complaint.
5. Informing the Complainant that he or she has a right: (1) to have a witness or representative present during any interviews and (2) to submit any documentation he or she perceives as relevant to proving the allegations contained in the complaint.

6. Providing the Respondent an opportunity to respond to all aspects of the Complainant's allegations.
7. Determining which witnesses will be contacted and interviewed.
8. Contacting the Complainant at the conclusion of the investigation to provide the Complainant an opportunity to provide additional information before INDOT prepares its final report to be forwarded to FHWA.
9. Writing a confidential investigative report (IR) and forwarding a copy of the same to the FHWA. The IR shall not be disclosed to the Complainant or Respondent. The IR shall include the following:
  - A summary of the written complaint;
  - A brief description of the standard of review/methodology used to investigate the complaint;
  - Summarized statements taken from witnesses;
  - Findings of fact and an analysis of the evidence gathered. The analysis should address each allegation in the complaint and Respondent's position;
  - A determination, based on the preponderance of evidence presented, of whether the complaint is substantiated or unsubstantiated; and
  - Proposed corrective action for substantiated cases.
10. Drafting a Letter of Findings (LOF) and mailing the LOF to the FHWA, Respondent and Complainant (by certified mail) within 60 calendar days of the date INDOT received the complaint. The LOF will include the following:

- A summary of the written complaint;
- A brief description of the standard of review/methodology used to investigate the complaint;
- Findings of fact and an analysis of the evidence gathered. The analysis should address each allegation in the complaint and Respondent's position;
- A determination, based on the preponderance of evidence presented, of whether the complaint is substantiated or unsubstantiated;
- Proposed corrective action for substantiated cases; and
- A notice of the right to appeal to the FHWA with an outline of the procedures for appeal.

#### 8. Corrective Action

If INDOT recommends corrective action, INDOT will give the Respondent 30 calendar days to inform INDOT of the actions taken for compliance. The Title VI/ADA Program Manager shall monitor Respondent's corrective action compliance.

Corrective action may include actions that the Respondent will complete at a future date after the initial 30 days and must include the projected time in which the Respondent will complete the action.

If the Respondent has not taken the recommended corrective action within the 30-day period allowed, INDOT will find the Respondent to be in noncompliance with Title VI and its implementing regulations. Noncompliance not corrected by informal means as described above may be subject to sanctions as per 49 CFR § 21.13.

#### 9. Pre-Investigative/Administrative Closures

It is the general practice of INDOT to investigate all complaints that are complete; however, INDOT may administratively close a complaint at its discretion. The types of complaints that may be administratively closed and will not be investigated include the following:

- Complaints that fail to state a claim or provide any substantial or coherent claim;
- Complaints that are outside the scope of INDOT's Title VI jurisdiction;
- Untimely complaints filed more than 180 days after the alleged discriminatory acts;
- Complaints voluntarily withdrawn by the Complainant;

- Complaints in which the investigation has been impaired by INDOT’s inability to locate the Complainant;
- Complaints that are a continuation of a pattern of previously filed complaints involving the same or similar allegations against the same recipient or other recipients that repeatedly have been found factually or legally unsubstantiated by INDOT;
- Complaints containing the same allegations and issues that have been addressed in a recently closed complaint or compliance review conducted by INDOT;
- Complaints containing allegations that are foreclosed by previous decisions by the Federal courts, Department of Justice or INDOT policy determinations;
- Complaints filed for complainants or parties who refuse to cooperate with the investigation and whose lack of cooperation substantially impairs the completion of the investigation. In such circumstances, the Complainant should be contacted and advised that their lack of cooperation has hindered the investigation. Furthermore, the Complainant must be advised that continued failure to cooperate may result in an administrative closure of the complaint without further investigation;
- Complaints transferred to another agency for investigation; and
- Complaints where the death of a Complainant makes it impossible to investigate the allegations fully or the death of the Complainant forecloses the possibility of relief because the complaint involved potential relief solely for the Complainant or injured party.

INDOT shall notify Complainants in writing via certified mail when a determination is made to administratively close a case without further investigation. The notification shall include an explanation of the basis for the administrative closure.

## 10. Appeals Procedures

The Complainant has the right to appeal to the FHWA any determination that results in an unsubstantiated claim. INDOT will convey to the Complainant the procedures for filing the appeal to the FHWA along with the Letter of Findings. The procedure for filing an appeal with FHWA is:

- a. Complainant must submit the appeal in writing to the Title VI/ADA Program Manager within 14 calendar days of receipt of INDOT’s Letter of Findings.
- b. Complainant must cite in the appeal the specific portion(s) of the finding with which the Complainant disagrees and the reason(s) for the disagreement.

- c. INDOT will forward the appeal and the record within seven calendar days to FHWA for review.
- d. FHWA has 30 calendar days after the receipt of the appeal to complete its review.
- e. Written findings of FHWA are then sent to the Complainant and the INDOT Commissioner.

#### 11. Confidentiality

In accordance with DOT Order 1000.12, the Complainant's identity shall be kept confidential except to the extent necessary for carrying out an investigation. If an investigator determines that it is necessary to disclose the Complainant's identity to the Respondent or a third party, the investigator must first obtain Complainant's written permission. Furthermore, Complainant's written consent must be obtained before a copy of the complaint may be provided to Respondent or a third party.

#### 12. Records

INDOT's Economic Opportunity Division shall maintain all records of an investigation in a confidential area for three years.

#### 13. Additional Filing Options

A complaint may also be filed with one of the following offices:

Indianapolis District EEOC Office  
101 West Ohio Street, Ste 1900  
Indianapolis, IN 46204  
Phone: (800) 669-4000  
Fax: (317) 226-7953  
TTY: 1 (800) 669-6820

Indiana Civil Rights Commission  
100 N. Senate Ave., Room N103  
Indianapolis, IN 46204  
Toll Free: 1 (800) 628-2909  
Phone: (317) 232-2600  
Fax: (317) 232-6560  
Hearing Impaired: 1 (800) 743-3336

Federal Highway Administration  
Indiana Division  
575 N. Pennsylvania St., Room 254  
Indianapolis, IN 46204

## E. Employee Relations/Human Resources

### 1. Overview

The Human Resources Department, which is part of the Indiana State Personnel Department with staff embedded in INDOT, is responsible for recruiting a diverse pool of qualified candidates to fill INDOT vacancies. INDOT also provides ongoing staff training to ensure that all staff understands INDOT's policy of nondiscrimination based on disability. Additionally, during the application, interviewing, hiring and employment process INDOT provides reasonable accommodation to applicants and employees with disabilities.

### 2. Policies and Procedures

A review of the Human Resources Department practices and policies revealed that the department has a policy that dictates information collected pursuant to a request for Family Medical Leave (FML) must be kept separate from personnel records or shared only in limited situations as authorized by the ADA and/or Section 504; however, there is not a written policy to require that all medical information, including pre and post employment medical examinations and drug tests be kept separate. As a practice, the Human Resources Department keeps all medical information separate from personnel.

The Human Resources Department does collect affirmative action data; however, the department's data collection efforts do not currently include collecting affirmative action data regarding disabilities as it is not a requirement under the law.

## F. Public Involvement

### 1. Overview

The Communications Division manages INDOT's internal and external communications. Additionally, the Communications Division is a clearinghouse for all information supplied to the various media outlets and provides uniformity and control over all content. The Customer Service Center, which is part of the Communications Division, responds to, coordinates and manages all outside customer inquiries relating to Indiana transportation.

### 2. Policies and Procedures

INDOT's policies and procedures for providing reasonable accommodations for persons with disabilities are contained in its April 1, 2009 Public Involvement Procedures Policy Manual, which is available online at <http://www.in.gov/indot/files/ApprovedINDOTPIManual.pdf>. To accommodate individuals with hearing, speech, vision or mobility impairments, INDOT's requirements include:



- (1) Holding public meetings and hearings in places accessible to individuals in wheelchairs;
- (2) Upon advance request, assisting people with physical disabilities who wish to participate and give testimony in public meetings and hearings. Such assistance shall include: the use of sign language interpreters, listening assistance mechanisms, a telecommunications device for the deaf, recording devices, or providing documents in an alternative (e.g. large print, tape recordings, Braille or electronic formats, or individuals to explain the content of visual displays); and
- (3) Providing a contact person's telephone number in all meeting and hearing notices and advertisements for individuals to contact regarding any requests for assistance or reasonable accommodation.

### 3. ADA Community Advisory Council

INDOT does not currently have a dedicated ADA community advisory group to provide input from the public regarding the accessibility of its programs and facilities, act as a sounding board for proposed projects or provide feedback on INDOT's transition plan.

### 4. Website

The Title VI/ADA Program Manager periodically updates the INDOT website as needed with information and resources concerning INDOT's ADA compliance. The website includes a link to the complaint form, relevant laws, INDOT's nondiscrimination statement, training schedules and a subrecipient toolbox.<sup>6</sup>

## G. Effective Communication and/Auxiliary Aids

### 1. Interpreters

The Communications Division addresses the needs of persons on a project specific basis. The Office of Communications coordinates with other agencies to identify people in the community who are able to provide translation and interpretation services.

### 2. Website Communications

INDOT's website, which follows the standards set by the State of Indiana website [IN.gov](http://IN.gov), includes a free screen reader and translation tool that requires a simple and secure download. Browsealoud by textHELP allows visually impaired users and foreign language speakers to use the [IN.gov](http://IN.gov) website without difficulty by reading aloud the users' page content, including HTML, PDF and Word files. Users can choose the language, pronunciations and voice that will read the website.

---

<sup>6</sup> The subrecipient toolbox includes sample forms and answers to frequently asked questions for organizations, agencies, contractors, consultants, etc. who receive federal funds from INDOT.

### 3. Telecommunications

INDOT does not currently provide TDD/TTY phone services for its public services that use telephones; however, INDOT does provide TDD/TTY phone service for its employees who request a reasonable accommodation during their employment.

Public pay phones are available at rest stops along the interstate; however, the phones are not equipped with TDD/TTY services.

## H. Buildings and Related Site Elements

### 1. Overview

INDOT has 2,457 structures. Of those structures, 257 are public active buildings such as rest areas, weigh stations, district offices, sub-district offices, units, area labs, trailers and other out buildings. INDOT does not consider its salt and storage buildings public access structures.

According to the data collected by INDOT's Office of Facilities Management, many of the older facilities that were compliant at the time of construction are not compliant with the current ADA requirements; however, it is INDOT's practice to bring its facilities into compliance when we renovate buildings or hire a person with a disability who requires reasonable accommodation.

Recent building assessments during the reporting period indicate that the following deficiencies currently exist:

- Noncompliant water closets and corridor widths
- Upstairs conference rooms without elevator access
- Lack of accessible entrances
- Absence of ramps
- Sinks and drinking fountains that do not meet ADA height requirements

### 2. Rest Areas

INDOT adapted most of its rest area water closets to remove access barriers, including rest areas that have not undergone a renovation.

### 3. Policies and Procedures

Building assessment data is stored in the facilities module of WMS. INDOT does not use the ADA Accessibility Guidelines (ADAAG) in their entirety; however, INDOT does include the ADAAG in its assessments. INDOT developed its building assessment standards from facility management guidelines specific to INDOT facilities. The facilities department reviews INDOT's building assessment criteria annually to ensure compliance with the current ADA requirements.

INDOT Facilities Long Range Plan (Long Range Plan) includes building upgrades. INDOT's central office administers and implements the Long Range Plan with input from its districts. The Long Range Plan uses specific criteria based on structure type to prioritize facilities with the greatest need for replacement to become ADA compliant. The schedule for building replacements is included in the Long Range Plan. INDOT's building replacement schedule is a 30-year plan. INDOT is in the twentieth year of its Long Range Plan.

### 4. Funding

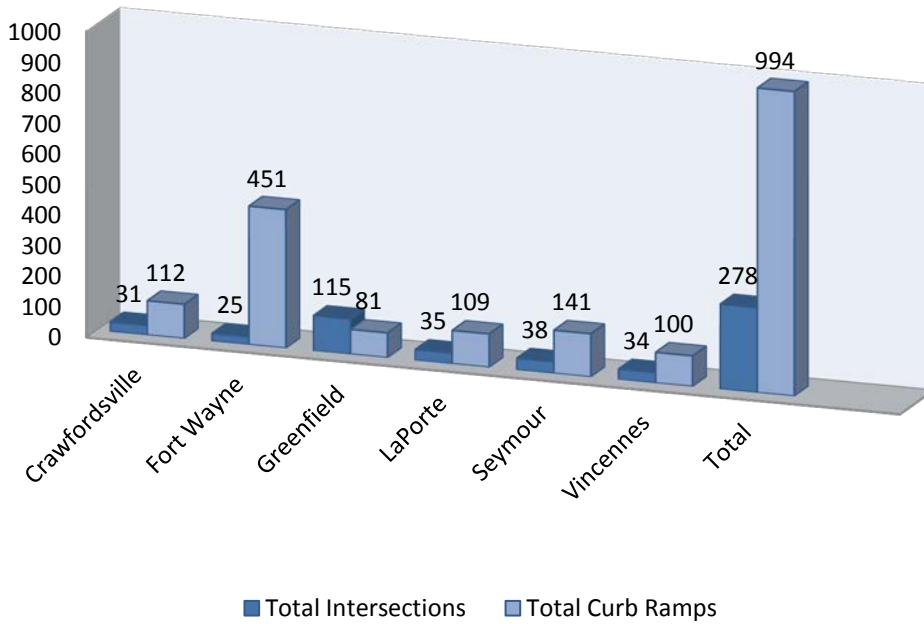
Ninety percent of INDOT's funding for weigh stations and rest areas comes from the FHWA. All other building improvements are 100% state funded, except weigh stations and rest areas.

#### I. Accessibility of Pedestrian Rights-of Way-Facilities (PROW)

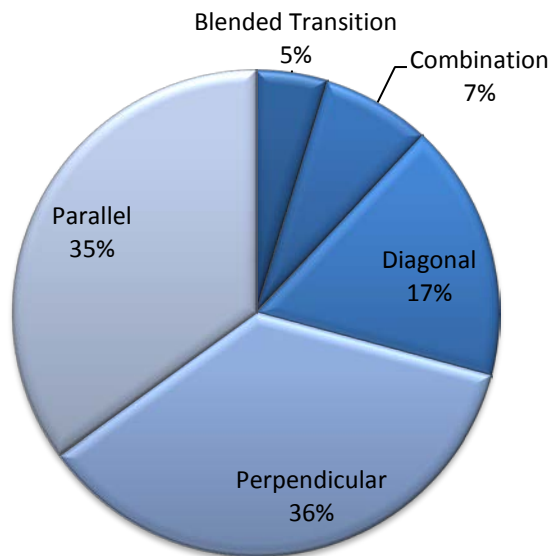
During the inventory pilot project, each district surveyed a minimum of 30 projects let from January 1, 2000 through December 31, 2010 in urban areas. The pilot project goals included: (1) inventorying a minimum of 720 curb ramps and related elements; (2) determining a baseline figure of ADA compliance in existing urban areas for sidewalks and curb ramps; (3) evaluating the various evaluation and data collection tools available; and (4) training staff to conduct field evaluations and specific quality control standards.

Overall, the pilot project revealed that the majority of INDOT's projects are compliant with the current ADA standards.

## Pilot Project Inventory

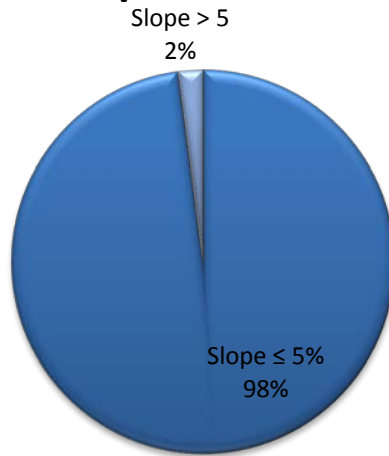


## Types of Curb Ramps Inventoried



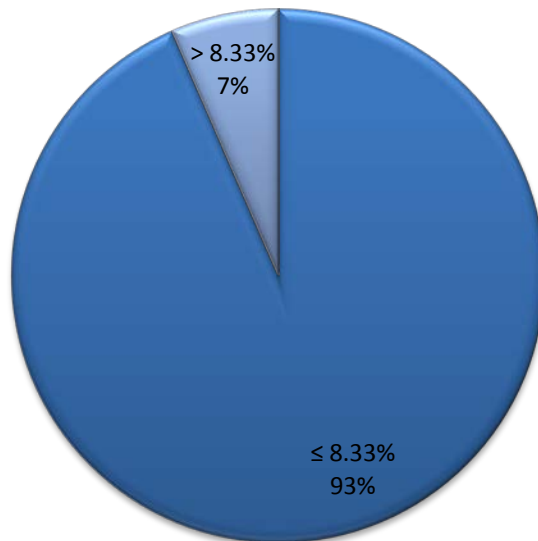
INDOT sought to survey a variety of curb ramp types for its pilot project.

### Gutter Slopes at Curb Ramps



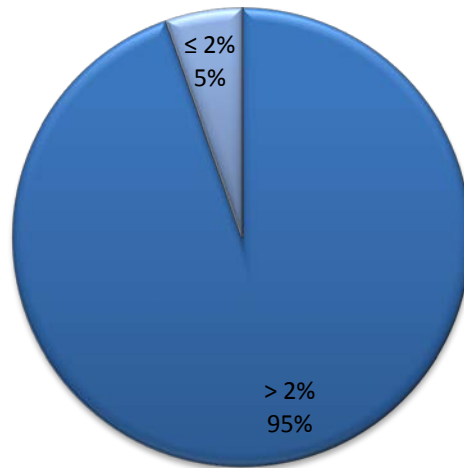
The maximum allowable gutter slope is 5%.

### Slopes on Curb Ramps



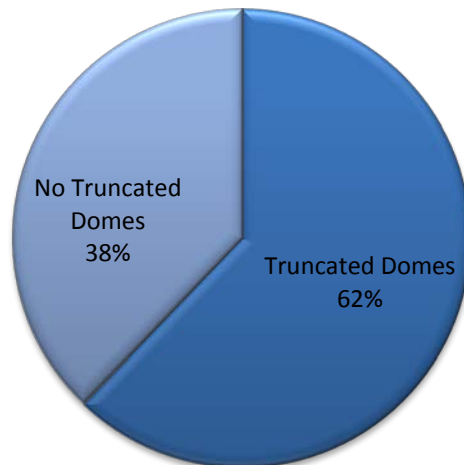
The maximum allowable slope on a curb ramp is 8.33%.

## Curb Ramp Cross Slopes



The maximum allowable cross slope on a curb ramp is 2.0%

## Detectable Warning Elements Present



Truncated domes are required wherever walkways cross a vehicular path.

## IX. Plan and Schedule for Improvements

Upon careful review of the ADA self-evaluation findings outlined above, INDOT proposes to make the following changes to its practices to improve the accessibility of its programs and facilities to persons with disabilities. INDOT will continue to review and evaluate its practices and facilities to identify other methods, means and resources for improving overall accessibility to ensure compliance with the ADA.

### A. Notice of Nondiscrimination

In 2012, the Title VI/ADA Program Manager will commence publishing INDOT's notice of nondiscrimination in the following newspapers:

The Evansville Courier- Evansville, Indiana

The Journal Gazette – Fort Wayne, Indiana

The Frost Illustrated\* – Fort Wayne, Indiana

The Post Tribune – Gary, Indiana

The Gary Crusader\* - Gary, Indiana

\* Minority Newspaper

The Indianapolis Recorder\* – Indianapolis, Indiana

The Indiana Herald\* – Indianapolis, Indiana

The Indianapolis Star – Indianapolis, Indiana

The Kokomo Tribune – Kokomo, Indiana

Terre Haute Tribune Star – Terre Haute, Indiana

South Bend Tribune – South Bend, Indiana

INDOT will make the notice of nondiscrimination available in alternative formats upon request.

The Title VI/ADA Program Manager shall coordinate having the notice of nondiscrimination published at least once a year and retain a copy of the publications in which the notice appears.

### B. Public Rights of Way

INDOT shall implement a curb ramp schedule to provide for the installation of accessible curb ramps along its public rights of way.

Priority for the implementation of improvements may be determined based on the same priority system used in conducting the inventory. Furthermore, INDOT will use the data collected during the inventory of curb ramps and intersection crossings to commit available resources to the reconstruction of existing curb ramps and crossings not currently in compliance with the ADA.

INDOT will determine actual ADA improvements by the condition of the facility at the time of the project. The absence of the facility from the inventory will not prohibit ADA work from being completed.

Additionally, a person with a disability or his or her representative may make a complaint or request concerning the accessibility features of INDOT public rights of way (e.g. curb ramps). If INDOT receives a valid and meritorious request or complaint from a person about a substandard access ramp, then INDOT may at its discretion move that ramp up in priority on the improvement schedule or document if it is structurally impracticable to make the curb ramp fully compliant with the ADA.<sup>7</sup> If structurally impracticable to achieve full compliance, INDOT will make ADA improvements to the maximum extent possible.

#### C. Buildings and Related Site Elements

INDOT Office of Facilities Management will continue to conduct building assessments and based on the Long Range Plan and data collected and will make physical modifications as necessary to ensure that parking, entrances, pedestrian access routes, customer service areas, public telephones, restrooms and drinking fountains are accessible.

#### D. Employment

INDOT will continue to monitor its employment policies and practices annually through Title VI/ADA assessment and implement changes as necessary to comply with the ADA.

#### E. Public Outreach

Effective federal fiscal year 2011-2012, INDOT began collecting data regarding requests for reasonable accommodation to monitor its ADA compliance activities using a public outreach matrix. Furthermore, INDOT will make its transition plan available to the public online and in alternative formats upon request. Additionally, INDOT will form and commence holding meetings with its ADA community advisory team.

#### F. Communications

INDOT will continue to make improvements to the website as part of the regular website development and maintenance cycle. Furthermore, INDOT will make information on the website that is not in an accessible format available upon request within a reasonable time in an alternative format accessible to the requesting party or by an alternative means that allows the individual to use the data or information.

---

<sup>7</sup> See 28 CFR 35.151(a)(2).



## **X. Training**

INDOT's goal is to have a sufficient number of trained persons with technical knowledge and expertise performing field evaluations and monitoring new construction and alteration inspections to collect complete and accurate information. Therefore, INDOT plans to seek assistance from the FHWA, advocacy groups and educational institutions to identify needed training opportunities and to develop a curriculum for a regular and comprehensive training program to include modules, which may include the following:

- Title II ADA overview
- Inventory collection
- Technical training regarding the PROWAG, curb ramps, Accessible Pedestrian Signals (APS) and intersection geometrics
- Project development
- Accessible communication including documents and website development and public meetings
- Pedestrian design and planning
- Maintenance (e.g. snow and ice removal and maintenance agreements)
- Policies and procedures (e.g. public involvement, employment contracting and licensing, and complaint procedures)

## **XI. Monitoring and Status Reporting**

### **A. Introduction**

INDOT will review and update its transition plan at least every three years and include an update of the status of its ongoing self-evaluation if needed. If INDOT determines that it should add or remove items from the self-evaluation inventory, INDOT will update or correct the transition plan as needed and in accordance with the ADA. The Title VI/ADA Program Manager will monitor INDOT's active public facilities and major program areas through annual reviews to ensure satisfactory progress in accordance with this transition plan.

### **B. Field Inspections and Monitoring**

In accordance with the INDOT Standards and Specifications, INDOT shall inspect all curb ramps and sidewalks using the following recommended procedures:

1. Visually inspecting the site and dimensions
2. Using a tape measure to obtain dimensions
3. Recording all measurements on the appropriate inspection form and verifying that the project meets or exceeds the ADA standards

### **C. Computerized Tracking and Status Reporting**

The Title VI/ADA Program Manager shall oversee the development, maintenance and updating of the computerized tracking and reporting database with the assistance of the interdisciplinary team and subcommittee members as needed.

## **XII. Appendix**

### A. List of Acronyms

**ADAAG:** Americans with Disabilities Act Accessibility Guidelines

**ADA:** Americans with Disabilities Act

**EOD:** The Economic Opportunity Division of the Indiana Department of Transportation

**FHWA:** Federal Highway Administration

**PROWAG:** Proposed Accessibility Guidelines for pedestrian Facilities in the Public Right of Way

**TRS:** Telecommunications Relay Service

**TDD:** Telecommunications Device for the Deaf

**TTY:** Teletypewriter

### B. Glossary of Terms

**ADA Transition Plan:** INDOT's transportation system plan that identifies accessibility needs, and identifies the process to integrate accessibility improvements, and ensures all transportation facilities, services, programs and activities are accessible to all individuals.

**Accessible:** A facility that provides access to people with disabilities using the design requirements of the 2010 Standards. (PROWAG R106.5)

**Accessible Pedestrian Signal (APS):** A device that communicates information about the WALK phase in audible and vibrotactile formats. (PROWAG R105.5)

**Alteration:** A change to a facility in the public right of way that affects or could affect access, circulation or use of the facility. An alteration must not decrease or have the effect of decreasing the accessibility of a facility or an accessible connection to an adjacent building or site.

**Americans with Disabilities Act (ADA):** The Americans with Disabilities Act of 1990, as amended sets design guidelines for accessibility to public facilities, including sidewalks and trails by individuals with disabilities.

**Americans with Disabilities Act Accessibility Guidelines (ADAAG):** The ADAAG contains scoping and technical requirements for accessibility to buildings and public facilities by individuals with disabilities under the ADA.

**Blended Curb or Transition:** A curb ramp shallower than 1:20 (5%), where the sidewalk is blended into or is flush with the street.

**Building:** Any structure used or intended for supporting or sheltering any use or occupancy. (PROWAG R106.5)

**Circulation Path:** An exterior or interior way of passage provided for pedestrian travel including, walks, hallways, courtyards, elevators, platform lifts, ramps, stairways and landings.

**Cross Slope:** The slope that is perpendicular to the direction of accessible pedestrian travel. (PROWAG R105.5)

**Crosswalk:** The part of a roadway at an intersection that is included within the extensions of the lateral lines of the sidewalks on opposite sides of the roadway, measured from the curb line or, in the absence of curbs, from the edges of the roadway or, in the absence of a sidewalk on one side of the roadway, the part of the roadway included within the extension of the lateral lines of the sidewalk at right angles to the centerline.

**Curb Line:** A line at the face of the curb that marks the transition from the roadway to a sidewalk or planting strip between the sidewalk and the gutter or roadway.

**Curb Ramp:** A short ramp cutting through a curb or built up to it. (PROWAG R106.5)

**Detectable Warning:** A surface feature built in or applied to walking surfaces or other elements to advise of an upcoming change from a pedestrian to a vehicular way. (PROWAG R405.5)

**Element:** An architectural or mechanical component of a facility, space, site or public right of way.

**Entrance:** Any access point to a building or facility used for entering. Includes entry door or gate and hardware. (PROWAG R106.5)

**Facility:** All or any portion of structures, improvements, elements and pedestrian or vehicular routes located on a site or a public right-of-way.

**Flush Transition:** See Blended Transition

**Grade Break:** The meeting line of two adjacent surfaces of different slope (grade).

**Island:** Curbed or painted area outside the vehicular path that is provided to separate and direct traffic movement, which also may serve as a refuge for pedestrians.

**Marked Crosswalk:** Any portion of a roadway at an intersection or elsewhere that is distinctly indicated for pedestrian crossing by lines or other markings on the surface.

**Parallel Curb Ramp:** A system of two sloped ramps that run parallel to the curb line from a common lower landing that is approximately level with the street.

**Pedestrian Access Route:** A continuous and unobstructed walkway within a pedestrian circulation path that provides accessibility. (PROWAG R105.5)

**Perpendicular Curb Ramp:** A curb ramp with a main slope running perpendicular to the curb line and with one or more flared side slopes.

**Projects:** Any construction or maintenance project that disturbs the pavement by at least  $\frac{3}{4}$  of an inch.

**Public Right of Way:** Land or property owned by a public entity and usually acquired for or devoted to transportation or pedestrian purposes.

**Public Use:** Interior or exterior, rooms, space or elements that are made available to the public.

**Ramp:** A walking surface that has a running slope steeper than 5%.

**Right of Way:** Denotes land, property or interest therein, usually in a strip, acquired for or devoted to transportation purposes.

**Running Slope:** The slope that is parallel to the direction of travel expressed as a ratio of rise to run in the public right of way. This is usually called grade and is expressed as a percentage.

**Section 504:** Section 504 of the Rehabilitation Act of 1973, which prohibits discrimination in any program or activity receiving federal financial assistance.

**Sidewalk:** That portion of a public right of way between the curb line or lateral line of a roadway and the adjacent property line that is improved for use by pedestrians.

**Street Furniture:** Elements in the public right-of-way intended for use by pedestrians.

**Technically Infeasible:** An alteration that has little likelihood of being accomplished because existing structural conditions would require removing or altering a load bearing member that is an essential part of the structural frame or because other existing physical or site constraints prohibit modification or addition of elements, spaces or features that are in full strict compliance with the minimum requirements of the 2010 ADA Standards.

**Vibrotactile:** A vibrating surface, located on the accessible pedestrian signal button that communicates information through touch. (PROWAG R105.5)

C. Notice of Nondiscrimination



**INDIANA DEPARTMENT OF TRANSPORTATION**  
*Driving Indiana's Economic Growth*

100 North Senate Avenue  
Room N750  
Indianapolis, Indiana 46204

PHONE: (317) 233-6511  
FAX: (317) 232-0891

**Mitchell E. Daniels, Jr., Governor**  
**Michael B. Cline, Commissioner**

**NOTICE OF NONDISCRIMINATION UNDER  
THE AMERICANS WITH DISABILITIES ACT AND  
SECTION 504 OF THE REHABILITATION ACT OF 1973**


Pursuant to Title II of the Americans with Disabilities Act as amended (ADA) of 1990 (42 U.S. C. §§12101 et seq.) and Section 504 of the Rehabilitation Act of 1973, as amended (Section 504) (29 U.S.C. §794) and implementing regulations found in 28 CFR 35 and 49 CFR 27, the Indiana Department of Transportation (INDOT) does not discriminate against qualified individuals with disabilities in its policies, or in the admission of, access to, treatment of or employment in its programs, services or activities.

Upon request, INDOT will use its best efforts to provide appropriate auxiliary aids and services to facilitate effective communication for qualified persons with disabilities so that they have an equal opportunity to obtain the same result, to gain the same benefit or to reach the same level of achievement as provided to others. These efforts may include providing qualified sign language interpreters, Brailled documents, and other products and services to make communications accessible to individuals with speech, hearing and vision impairments.

Upon request, INDOT will make reasonable modifications to policies and programs to ensure that qualified individuals with disabilities have an equal opportunity to enjoy its programs and activities. INDOT is not required to take any action that would fundamentally alter the nature of its programs or services or impose an undue financial or administrative burden.

INDOT will not place a surcharge on qualified individuals with disabilities to cover the cost of providing auxiliary aids, services or reasonable modifications of policies.

Inquires or complaints regarding Section 504 or the ADA should be directed to Latosha N. Higgins, Title VI/ADA Program Manager, Economic Opportunity Division, 100 N. Senate N750, Indianapolis, IN 46204, (317) 234-6142, [LHiggins@indot.in.gov](mailto:LHiggins@indot.in.gov). INDOT will investigate all complaints in accordance with INDOT's Title VI compliant process, which is also used for ADA complaints, and promptly take any remedial action deemed necessary to provide an equitable resolution to overcome the effects of a substantiated violation.

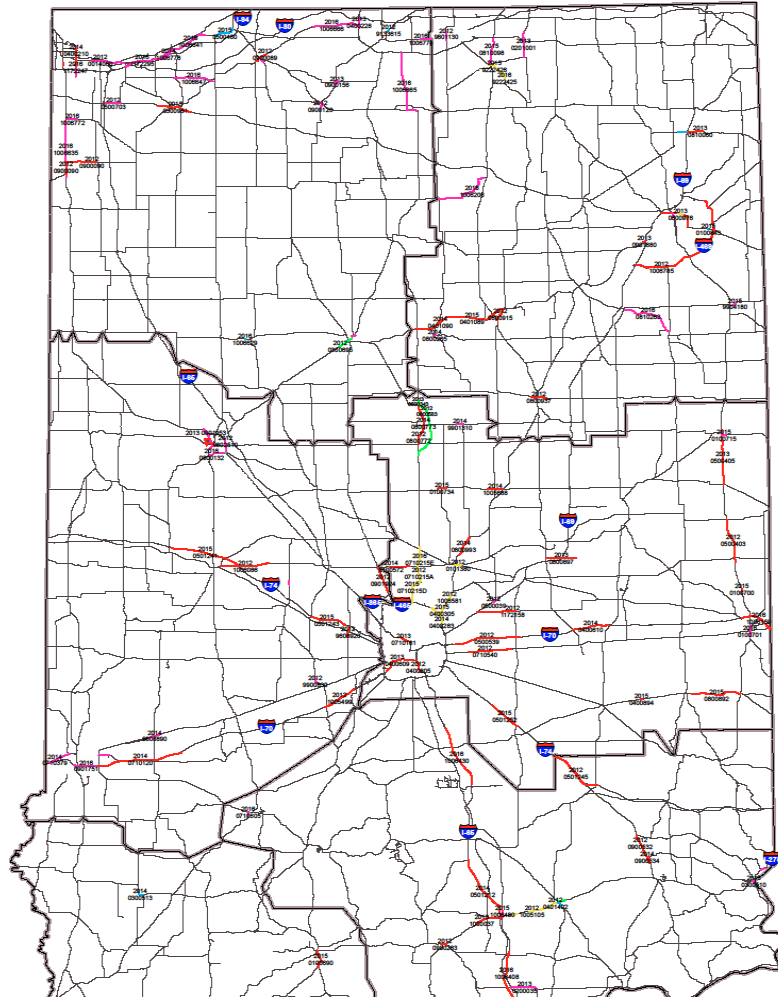
  
Michael B. Cline,  
INDOT Commissioner

5-11-11  
Date

[www.in.gov/dot/](http://www.in.gov/dot/)  
*An Equal Opportunity Employer*

D. Planned Urban Linear Projects (2012-2016)

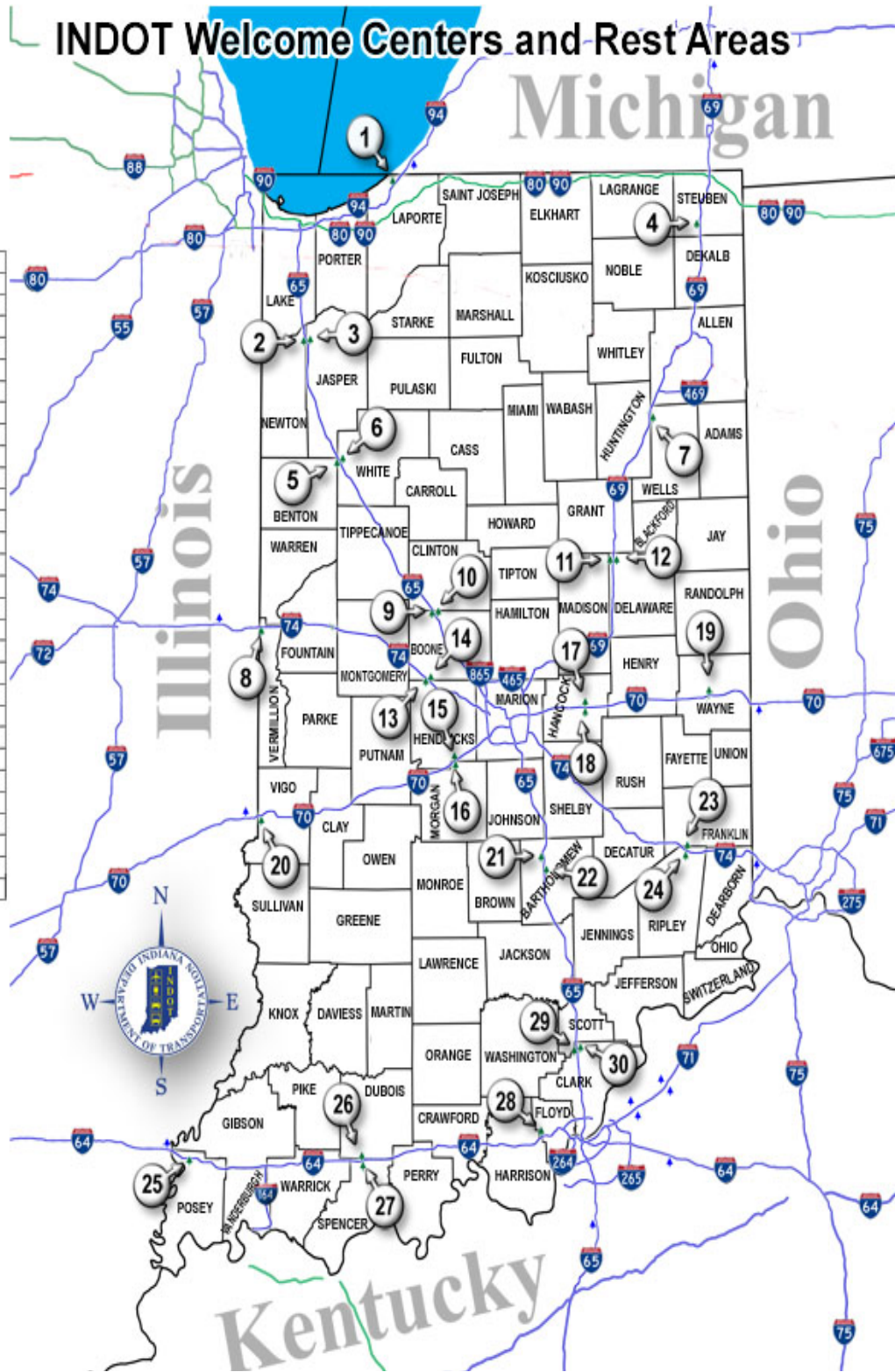
**INDOT Planned Urban Linear Projects**  
Fiscal Years 2012-2016



E. Rest Area Map

# INDOT Welcome Centers and Rest Areas

|    |                 |
|----|-----------------|
| 01 | Michigan City   |
| 02 | Kankakee SB     |
| 03 | Kankakee NB     |
| 04 | Pigeon Creek    |
| 06 | Wolcott SB      |
| 06 | Wolcott NB      |
| 07 | Flat Creek NB   |
| 08 | Spring Creek    |
| 09 | Lebanon SB      |
| 10 | Lebanon NB      |
| 11 | Pipe Creek SB   |
| 12 | Pipe Creek NB   |
| 13 | Litton EB       |
| 14 | Litton WB       |
| 15 | Plainfield WB   |
| 16 | Plainfield EB   |
| 17 | Greenfield WB   |
| 18 | Greenfield EB   |
| 19 | Centerville WB  |
| 20 | Clear Creek     |
| 21 | Taylorsville SB |
| 22 | Taylorsville NB |
| 23 | Batesville WB   |
| 24 | Batesville EB   |
| 25 | Black River     |
| 26 | Nancy Hanks WB  |
| 27 | Nancy Hanks EB  |
| 28 | Lanesville      |
| 29 | Henryville SB   |
| 30 | Henryville NB   |





## F. External Complaint of Discrimination



**EXTERNAL COMPLAINT OF DISCRIMINATION**  
 State Form 54516 (1-11)  
 INDIANA DEPARTMENT OF TRANSPORTATION  
 ECONOMIC OPPORTUNITY DIVISION

**Latosha N Higgins, Title VI / ADA Program Manager**  
**INDIANA DEPARTMENT OF TRANSPORTATION**  
**ECONOMIC OPPORTUNITY DIVISION**  
 100 N Senate RM N750  
 Indianapolis, IN 46204  
 Telephone number : (317) 234-6142  
 Fax number : (317) 233-0891  
 E-mail address: LHiggins@indot.in.gov  
 www.in.gov/dot/

**INSTRUCTIONS:**

The purpose of this form is to help any person interested in filing a discrimination complaint with the Indiana Department of Transportation (INDOT). If the complaint is against INDOT, INDOT's Title VI/ADA Program Manager will forward it to the appropriate federal agency for investigation.

You are not required to use this form. You may write a letter with the same information, sign it and return it to the address printed above.

All items in bold must be completed for your complaint to be investigated. Failure to provide complete information may impair the investigation of your complaint.

Title VI of the Civil Rights Act of 1964, as amended and its related statutes and regulations (Title VI) prohibit discrimination on the basis of race, color, national origin, sex, age, disability/handicap or income status in connection with programs or activities receiving federal financial assistance from the United States Department of Transportation, Federal Highway Administration and/or Federal Transit Administration. These prohibitions extend to INDOT as a direct recipient of federal financial assistance and to its sub-recipients, consultants, and contractors, whether federally funded or not.

INDOT is also required to implement measures to ensure that persons with limited English proficiency and persons with disabilities have meaningful access to the services, benefits, and information of all its programs and activities under Executive Order 13166 and the Americans with Disabilities Act of 1990, as amended.

Upon request, assistance will be provided if you are an individual with a disability or have limited English proficiency. Complaints may also be filed using alternative formats, such as computer disk, audiotape or Braille. For TTY customers, dial 711 to reach the Indiana Relay Service.

You also have the right to file a complaint with other state or federal agencies that provide federal financial assistance to INDOT. Additionally, you have a right to seek private counsel.

INDOT and its sub-recipients, consultants, and contractors are prohibited from retaliating against any individual because he or she opposed an unlawful policy or practice, filed charges, testified, or participated in any complaint action under Title VI or other nondiscrimination authorities.

Please make a copy of your complaint form for your personal records. Do not send your original documents as they will not be returned. Mail the original complaint form along with any copies of documents or records relevant to your complaint to the address above.

Complaints of discrimination must be filed within 180 days of the date of the alleged discriminatory act. If the alleged act of discrimination occurred more than 180 days ago, please explain your delay in filing this complaint.

**\*\*Your complaint cannot be processed without your signature.**

| COMPLAINANT INFORMATION                               |                                |                                    |
|---|--------------------------------|------------------------------------|
| Name (first, middle, and last)                        |                                |                                    |
| Address (number and street, city, state and ZIP code) |                                |                                    |
| Home telephone number<br>( ) -                        | Work telephone number<br>( ) - | Cellular telephone number<br>( ) - |



|  |
|--|
|  |
|--|

|                     |                         |
|---------------------|-------------------------|
| Name of complainant | Date (month, day, year) |
|---------------------|-------------------------|

**Provide the names of any individuals with additional information regarding your complaint:**

|   |       |
|---|-------|
| Name of witness 1 (first, middle, and last) | Title |
|---|-------|

|                 |
|-----------------|
| Name of company |
|-----------------|

|   |
|---|
| Address (number and street, city, state and ZIP code) |
|---|

|                                |                                |                                    |
|--------------------------------|--------------------------------|------------------------------------|
| Home telephone number<br>( ) - | Work telephone number<br>( ) - | Cellular telephone number<br>( ) - |
|--------------------------------|--------------------------------|------------------------------------|

|  |
|--|
| Include a brief description of the relevant information the witness may provide to support your complaint of discrimination. |
|  |

|   |       |
|---|-------|
| Name of witness 2 (first, middle, and last) | Title |
|---|-------|

|                 |
|-----------------|
| Name of company |
|-----------------|

|   |
|---|
| Address (number and street, city, state and ZIP code) |
|---|

|                                |                                |                                    |
|--------------------------------|--------------------------------|------------------------------------|
| Home telephone number<br>( ) - | Work telephone number<br>( ) - | Cellular telephone number<br>( ) - |
|--------------------------------|--------------------------------|------------------------------------|

|  |
|--|
| Include a brief description of the relevant information the witness may provide to support your complaint of discrimination. |
|  |

|   |       |
|---|-------|
| Name of witness 3 (first, middle, and last) | Title |
|---|-------|

|                 |
|-----------------|
| Name of company |
|-----------------|

|   |
|---|
| Address (number and street, city, state and ZIP code) |
|---|

|                                |                                |                                    |
|--------------------------------|--------------------------------|------------------------------------|
| Home telephone number<br>( ) - | Work telephone number<br>( ) - | Cellular telephone number<br>( ) - |
|--------------------------------|--------------------------------|------------------------------------|

|  |
|--|
| Include a brief description of the relevant information the witness may provide to support your complaint of discrimination. |
|  |

|   |
|---|
| How would you like your complaint to be resolved? |
|---|

|                     |                         |
|---------------------|-------------------------|
|                     |                         |
|                     |                         |
|                     |                         |
| Name of complainant | Date (month, day, year) |

|  |   |
|--|---|
| Have you filed a complaint alleging the same discrimination with another state or federal agency? <input type="checkbox"/> Yes <input type="checkbox"/> No |   |
| <i>If yes, please provide the following information for each agency:</i>   |   |
| Name of the agency   | Date complaint filed (month, day, year) |
| Case number assigned to your complaint   | Current status of your complaint        |
| How did you learn about your right to file a discrimination complaint with INDOT?  |   |
|  |   |
|  |   |
| Signature  | Date signed (month, day, year)          |

## G. Public Involvement Survey



**VOLUNTARY TITLE VI PUBLIC INVOLVEMENT SURVEY**  
 State Form 54515 (1-11)  
 INDIANA DEPARTMENT OF TRANSPORTATION  
 ECONOMIC OPPORTUNITY DIVISION

Latosha N Higgins, Title VI/ADA Program Manager  
 INDIANA DEPARTMENT OF TRANSPORTATION  
 ECONOMIC OPPORTUNITY DIVISION  
 100 N Senate RM N750  
 Indianapolis, IN 46204  
 Telephone number : (317) 234-6142  
 Fax number : (317) 233-0891  
 E-mail address: LHiggins@indot.in.gov  
[www.in.gov/dot/](http://www.in.gov/dot/)

As a recipient of federal funds, the Indiana Department of Transportation (INDOT) is required to develop a procedure for gathering statistical data regarding participants and beneficiaries of its federal-aid highway programs and activities (23 CFR §200.9(b)(4)). INDOT is distributing this voluntary survey to fulfill that requirement to gather information about the populations affected by a proposed project.

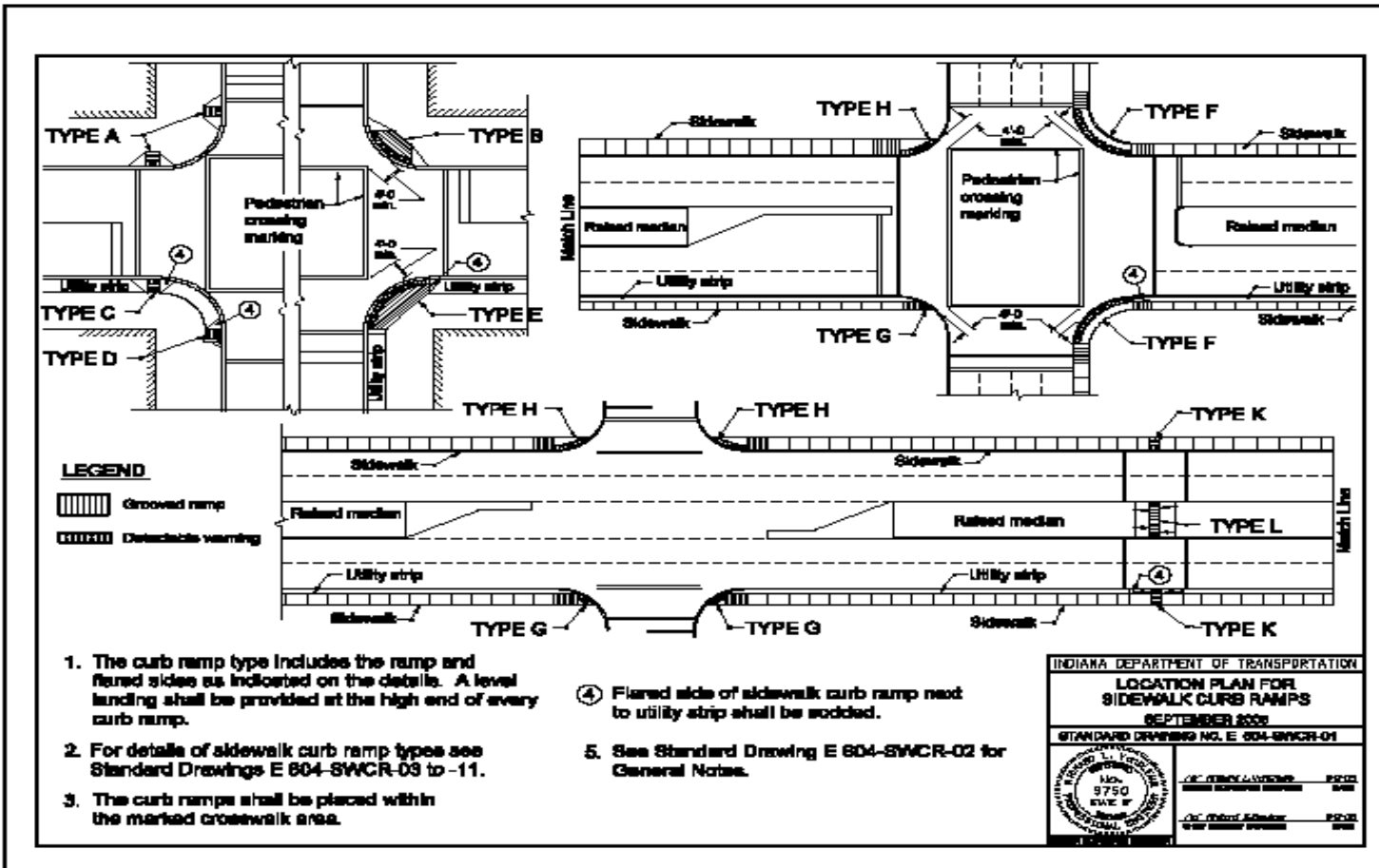
You are not required to complete this survey. Submittal of this information is voluntary. This form is a public document that INDOT will use to monitor its programs and activities for compliance with Title VI of the Civil Rights Act of 1964, as amended and its related statutes and regulations.

If you have any questions regarding INDOT's responsibilities under Title VI of the Civil Rights Act of 1964 or the Americans with Disabilities Act, please contact INDOT's Title VI/ADA Program Manager Latosha N. Higgins at 100 N Senate RM N750, Indianapolis, IN 46204, (317) 234-6142, e-mail: [LHiggins@indot.in.gov](mailto:LHiggins@indot.in.gov).

You may return the survey by folding it and placing it on the registration table (if you received it at a public hearing or meeting) or by mailing or faxing it to the address above.

|   |  |
|---|--|
| Date (month, day, year)   |  |
| Project name  |  |
| Proposed project location   |  |
| Gender: <input type="checkbox"/> Female <input type="checkbox"/> Male   | Ethnicity: <input type="checkbox"/> Hispanic or Latino <input type="checkbox"/> Not Hispanic or Latino |
| Race: (Check one or more):  |  |
| <input type="checkbox"/> American Indian or Alaska Native   | <input type="checkbox"/> Asian   |
| <input type="checkbox"/> Native Hawaiian or Other Pacific Islander  | <input type="checkbox"/> Black or African-American   |
|   | <input type="checkbox"/> White   |
|   | <input type="checkbox"/> Multiracial   |
| Age: <input type="checkbox"/> 1-21 <input type="checkbox"/> 22-40 <input type="checkbox"/> 41-65 <input type="checkbox"/> 65+ | Disability: <input type="checkbox"/> Yes <input type="checkbox"/> No                                   |
| Household Income:   |  |
| <input type="checkbox"/> 0-\$12,000   | <input type="checkbox"/> \$12,001-\$24,000   |
| <input type="checkbox"/> \$36,001-48,000  | <input type="checkbox"/> \$48,001-\$60,000   |
|   | <input type="checkbox"/> \$24,001-\$36,000   |
|   | <input type="checkbox"/> \$60,001 +  |

H. Location Plan for Sidewalk Curb Ramps (September 2009)



I. Design Memorandum No. 09-33



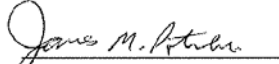
**INDIANA DEPARTMENT OF TRANSPORTATION**

*Driving Indiana's Economic Growth*

**Design Memorandum No. 09-33**  
**Policy Change**

December 14, 2009

**TO:** All Design, Operations, and District Personnel, and Consultants

**FROM:**   
for Gary M. Mrocza  
Director  
Production Management Division

**SUBJECT:** Modification Project Which Requires American Disability Act (ADA)  
Component Upgrades

**REVISES:** *Indiana Design Manual Section 51-1.08*

**EFFECTIVE:** March 3, 2010, Letting

The purpose of this policy is to address the definition of a modification project which, if designed and constructed, should include upgrades of all pedestrian facilities to current ADA standards. The lack of a formal definition has resulted in the inconsistent application of where ADA improvements should be included or if they are exempt within a project. An example is a maintenance project which is preventive in nature and is intended to extend the life a road or bridge wearing surface for an additional short period of time.

A modification project is defined as a transportation project with a scope of one or more of the following:

1. new, reconstructed, or widened pavement, shoulder, or bridge deck-surface;
2. surface-treatment thickness of greater than  $\frac{3}{4}$  in. (20 mm) along a roadway, bikeway, or pedestrian facility;
3. full-width surface milling beyond profile milling;
4. at least 30% of the total pavement area requires full-depth patching;
5. bridge-deck overlay or deck replacement;

J. 2011 ADA Self Evaluation Pilot Project

| <b>Street 1<br/>(North/South)</b>    | <b>Street 2<br/>(East/West)</b> | <b>County</b>  | <b>City</b>    | <b>District</b> |
|--------------------------------------|---------------------------------|----------------|----------------|-----------------|
| US 231                               | Walter Remley Drive             | Crawfordsville | Crawfordsville | Crawfordsville  |
| US 231                               | Wabash Ave.                     | Crawfordsville | Crawfordsville | Crawfordsville  |
| US 231                               | State Rte 32<br>(Market St.)    | Crawfordsville | Crawfordsville | Crawfordsville  |
| US 231                               | State Rte 32<br>(South Blvd)    | Crawfordsville | Crawfordsville | Crawfordsville  |
| US 231                               | Spring St.                      | Crawfordsville | Crawfordsville | Crawfordsville  |
| US 231                               | Pike St.                        | Crawfordsville | Crawfordsville | Crawfordsville  |
| US 231                               | Main St.                        | Crawfordsville | Crawfordsville | Crawfordsville  |
| US 231                               | Jefferson St.                   | Crawfordsville | Crawfordsville | Crawfordsville  |
| US 231                               | Grant Ave.                      | Crawfordsville | Crawfordsville | Crawfordsville  |
| US 231                               | Franklin St.                    | Crawfordsville | Crawfordsville | Crawfordsville  |
| US 231                               | Durham Dr                       | Crawfordsville | Crawfordsville | Crawfordsville  |
| US 231                               | Dry Branch Rd                   | Crawfordsville | Crawfordsville | Crawfordsville  |
| US 231                               | Jennison St.                    | Crawfordsville | Crawfordsville | Crawfordsville  |
| US 231                               | County Rd 150<br>South          | Crawfordsville | Crawfordsville | Crawfordsville  |
| US 231                               | College St.                     | Crawfordsville | Crawfordsville | Crawfordsville  |
| US 231                               | Chestnut St.                    | Crawfordsville | Crawfordsville | Crawfordsville  |
| US 231                               | Central Ave.                    | Crawfordsville | Crawfordsville | Crawfordsville  |
| I-65 South<br>Bound Ramp             | State Rte 26                    | Tippecanoe     | Lafayette      | Crawfordsville  |
| West<br>Meadowbrook<br>Drive         | State Rte 26                    | Tippecanoe     | Lafayette      | Crawfordsville  |
| Red Cloud Trail                      | State Rte 26                    | Tippecanoe     | Lafayette      | Crawfordsville  |
| Mercy Way                            | State Rte 26                    | Tippecanoe     | Lafayette      | Crawfordsville  |
| Meijer Drive                         | State Rte 26                    | Tippecanoe     | Lafayette      | Crawfordsville  |
| Mahan Drive                          | State Rte 26                    | Tippecanoe     | Lafayette      | Crawfordsville  |
| I-65 North Bound<br>Ramp             | State Rte 26                    | Tippecanoe     | Lafayette      | Crawfordsville  |
| Goldersgreen<br>Drive/CR 500<br>East | State Rte 26                    | Tippecanoe     | Lafayette      | Crawfordsville  |
| Frontage Rd                          | State Rte 26                    | Tippecanoe     | Lafayette      | Crawfordsville  |
| East                                 | State Rte 26                    | Tippecanoe     | Lafayette      | Crawfordsville  |



| <b>Street 1<br/>(North/South)</b> | <b>Street 2<br/>(East/West)</b> | <b>County</b> | <b>City</b> | <b>District</b> |
|-----------------------------------|---------------------------------|---------------|-------------|-----------------|
| Meadowbrook Drive                 |                                 |               |             |                 |
| County Rd 550 East                | State Rte 26                    | Tippecanoe    | Lafayette   | Crawfordsville  |
| Cochise Trail                     | State Rte 26                    | Tippecanoe    | Lafayette   | Crawfordsville  |
| Brookfield Drive                  | State Rte 26                    | Tippecanoe    | Lafayette   | Crawfordsville  |
| Brinker St./Park East Boulevard   | State Rte 26                    | Tippecanoe    | Lafayette   | Crawfordsville  |
| State Rd 19                       | Academy                         | Miami         | Amboy       | Ft. Wayne       |
| State Rd 19                       | Dailey                          | Miami         | Amboy       | Ft. Wayne       |
| State Rd 19                       | Lamn                            | Miami         | Amboy       | Ft. Wayne       |
| State Rd 19                       | Mill St                         | Miami         | Amboy       | Ft. Wayne       |
| State Rd 19                       | North of Pennsylvania St        | Miami         | Amboy       | Ft. Wayne       |
| State Rd 19                       | Quaker                          | Miami         | Amboy       | Ft. Wayne       |
| State Rd 19                       | Pennsylvania                    | Miami         | Amboy       | Ft. Wayne       |
| State Rd 1                        | Arnold St                       | Wells         | Bluffton    | Ft. Wayne       |
| State Rd 1                        | Capri St                        | Wells         | Bluffton    | Ft. Wayne       |
| State Rd 1                        | Central Avenue                  | Wells         | Bluffton    | Ft. Wayne       |
| State Rd 1                        | W. Cherry St                    | Wells         | Bluffton    | Ft. Wayne       |
| State Rd 1                        | W. Elm St                       | Wells         | Bluffton    | Ft. Wayne       |
| State Rd 1                        | Horton St                       | Wells         | Bluffton    | Ft. Wayne       |
| State Rd 1                        | Market St                       | Wells         | Bluffton    | Ft. Wayne       |
| State Rd 1                        | W. Perry St                     | Wells         | Bluffton    | Ft. Wayne       |
| State Rd 1                        | W. Poplar St                    | Wells         | Bluffton    | Ft. Wayne       |
| State Rd 1                        | W. Riley St                     | Wells         | Bluffton    | Ft. Wayne       |
| State Rd 1                        | W. South St                     | Wells         | Bluffton    | Ft. Wayne       |
| State Rd 1                        | Spring St                       | Wells         | Bluffton    | Ft. Wayne       |
| State Rd 1                        | Wabash St                       | Wells         | Bluffton    | Ft. Wayne       |
| State Rd 1                        | W. Walnut St                    | Wells         | Bluffton    | Ft. Wayne       |
| State Rd 1                        | Washington St                   | Wells         | Bluffton    | Ft. Wayne       |
| State Rd 1                        | Water St                        | Wells         | Bluffton    | Ft. Wayne       |
| State Rd 1                        | Wiley St                        | Wells         | Bluffton    | Ft. Wayne       |
| US 27                             | Baker St                        | Allen         | Ft. Wayne   | Ft. Wayne       |
| US 27                             | Branning St                     | Allen         | Ft. Wayne   | Ft. Wayne       |
| US 27                             | Butler St                       | Allen         | Ft. Wayne   | Ft. Wayne       |
| US 27                             | Creighton St                    | Allen         | Ft. Wayne   | Ft. Wayne       |
| US 27                             | Dalman St                       | Allen         | Ft. Wayne   | Ft. Wayne       |
| US 27                             | Dewald St                       | Allen         | Ft. Wayne   | Ft. Wayne       |
| US 27                             | Douglas St                      | Allen         | Ft. Wayne   | Ft. Wayne       |

| <b>Street 1<br/>(North/South)</b> | <b>Street 2<br/>(East/West)</b> | <b>County</b> | <b>City</b> | <b>District</b> |
|-----------------------------------|---------------------------------|---------------|-------------|-----------------|
| US 27                             | Douglas St                      | Allen         | Ft. Wayne   | Ft. Wayne       |
| US 27                             | E. Berry St                     | Allen         | Ft. Wayne   | Ft. Wayne       |
| US 27                             | E. Foster Pkwy                  | Allen         | Ft. Wayne   | Ft. Wayne       |
| US 27                             | Jefferson St                    | Allen         | Ft. Wayne   | Ft. Wayne       |
| US 27                             | Leith St                        | Allen         | Ft. Wayne   | Ft. Wayne       |
| US 27 SB                          | Lewis St                        | Allen         | Ft. Wayne   | Ft. Wayne       |
| US 27 SB                          | Lewis St                        | Allen         | Ft. Wayne   | Ft. Wayne       |
| US 27 SB                          | Masterson St                    | Allen         | Ft. Wayne   | Ft. Wayne       |
| US 27 SB                          | Murray St                       | Allen         | Ft. Wayne   | Ft. Wayne       |
| US 27 SB                          | Piqua St                        | Allen         | Ft. Wayne   | Ft. Wayne       |
| US 27 SB                          | Pontiac St                      | Allen         | Ft. Wayne   | Ft. Wayne       |
| US 27 SB                          | Rudisall St                     | Allen         | Ft. Wayne   | Ft. Wayne       |
| US 27 SB                          | Superior St                     | Allen         | Ft. Wayne   | Ft. Wayne       |
| US 27 SB                          | Sutten Field St                 | Allen         | Ft. Wayne   | Ft. Wayne       |
| US 27 SB                          | Taber St                        | Allen         | Ft. Wayne   | Ft. Wayne       |
| US 27 SB                          | Wallace St                      | Allen         | Ft. Wayne   | Ft. Wayne       |
| US 27 SB                          | Wayne St                        | Allen         | Ft. Wayne   | Ft. Wayne       |
| US 27 SB                          | Williams St                     | Allen         | Ft. Wayne   | Ft. Wayne       |
| US 27 SB                          | Wildwood St                     | Allen         | Ft. Wayne   | Ft. Wayne       |
| US 27 SB                          | Woodland St                     | Allen         | Ft. Wayne   | Ft. Wayne       |
| State Rd 15                       | Garden St                       | Elkhart       | Goshan      | Ft. Wayne       |
| State Rd 15                       | Mill St                         | Elkhart       | Goshan      | Ft. Wayne       |
| State Rd 15                       | Oakridge St                     | Elkhart       | Goshan      | Ft. Wayne       |
| State Rd 15                       | Wilden St                       | Elkhart       | Goshan      | Ft. Wayne       |
| State Rd 15                       | Burdick St                      | Elkhart       | Goshan      | Ft. Wayne       |
| State Rd 15                       | College Avenue                  | Elkhart       | Goshan      | Ft. Wayne       |
| State Rd 15                       | Douglas St                      | Elkhart       | Goshan      | Ft. Wayne       |
| State Rd 15                       | Franklin St                     | Elkhart       | Goshan      | Ft. Wayne       |
| State Rd 15                       | Gra-Roy St                      | Elkhart       | Goshan      | Ft. Wayne       |
| State Rd 15                       | Garfield St                     | Elkhart       | Goshan      | Ft. Wayne       |
| State Rd 15                       | High Park Avenue                | Elkhart       | Goshan      | Ft. Wayne       |
| State Rd 15                       | Jackson St                      | Elkhart       | Goshan      | Ft. Wayne       |
| State Rd 15                       | E. Jefferson St                 | Elkhart       | Goshan      | Ft. Wayne       |
| State Rd 15                       | Lafayette St                    | Elkhart       | Goshan      | Ft. Wayne       |
| State Rd 15                       | Purl St                         | Elkhart       | Goshan      | Ft. Wayne       |
| State Rd 15                       | SR 119                          | Elkhart       | Goshan      | Ft. Wayne       |
| State Rd 15                       | Washington St                   | Elkhart       | Goshan      | Ft. Wayne       |
| State Rd 15                       | Waverly Ave                     | Elkhart       | Goshan      | Ft. Wayne       |
| State Rd 15                       | Westwood                        | Elkhart       | Goshan      | Ft. Wayne       |

| <b>Street 1<br/>(North/South)</b>      | <b>Street 2<br/>(East/West)</b> | <b>County</b> | <b>City</b> | <b>District</b> |
|--|---------------------------------|---------------|-------------|-----------------|
| State Rd 5                             | W. 2nd St                       | Noble         | Lignier     | Ft. Wayne       |
| State Rd 5                             | W & E 3rd St                    | Noble         | Lignier     | Ft. Wayne       |
| State Rd 5                             | E. 4th St                       | Noble         | Lignier     | Ft. Wayne       |
| State Rd 5                             | E. 5th St                       | Noble         | Lignier     | Ft. Wayne       |
| State Rd 5                             | W. 6th & W 6th St               | Noble         | Lignier     | Ft. Wayne       |
| State Rd 5                             | Chapman St                      | Noble         | Lignier     | Ft. Wayne       |
| State Rd 5                             | College St                      | Noble         | Lignier     | Ft. Wayne       |
| State Rd 5                             | Depot St                        | Noble         | Lignier     | Ft. Wayne       |
| State Rd 5                             | Fulton St                       | Noble         | Lignier     | Ft. Wayne       |
| State Rd 5                             | Hollister Rd                    | Noble         | Lignier     | Ft. Wayne       |
| State Rd 5                             | Jackson St                      | Noble         | Lignier     | Ft. Wayne       |
| State Rd 5                             | Joy St                          | Noble         | Lignier     | Ft. Wayne       |
| State Rd 5                             | Mercer St                       | Noble         | Lignier     | Ft. Wayne       |
| State Rd 5                             | Miller St                       | Noble         | Lignier     | Ft. Wayne       |
| State Rd 5                             | E. North St                     | Noble         | Lignier     | Ft. Wayne       |
| State Rd 5                             | Pigeon St                       | Noble         | Lignier     | Ft. Wayne       |
| State Rd 5                             | Richmond St                     | Noble         | Lignier     | Ft. Wayne       |
| State Rd 5                             | Union St                        | Noble         | Lignier     | Ft. Wayne       |
| State Rd 5                             | Water St                        | Noble         | Lignier     | Ft. Wayne       |
| State Rd 15                            | W. Catherine St                 | Kosciusko     | Milford     | Ft. Wayne       |
| State Rd 15                            | W. Emeline St                   | Kosciusko     | Milford     | Ft. Wayne       |
| State Rd 15                            | W. Emeline St                   | Kosciusko     | Milford     | Ft. Wayne       |
| State Rd 15                            | Syracuse St                     | Kosciusko     | Milford     | Ft. Wayne       |
| State Rd 15                            | Section St                      | Kosciusko     | Milford     | Ft. Wayne       |
| State Rd 15                            | W. First St                     | Kosciusko     | Milford     | Ft. Wayne       |
| State Rd 1                             | Craig St                        | Wells         | Ossian      | Ft. Wayne       |
| State Rd 1                             | Craig St                        | Wells         | Ossian      | Ft. Wayne       |
| State Rd 1                             | Lafever St                      | Wells         | Ossian      | Ft. Wayne       |
| State Rd 1                             | Lafever St                      | Wells         | Ossian      | Ft. Wayne       |
| State Rd 1                             | Roe St                          | Wells         | Ossian      | Ft. Wayne       |
| State Rd 1                             | Mill St                         | Wells         | Ossian      | Ft. Wayne       |
| State Rd 9<br>(North end of<br>Bridge) | Front St                        | Noble         | Rome City   | Ft. Wayne       |
| State Rd 9                             | Front St                        | Noble         | Rome City   | Ft. Wayne       |
| State Rd 9                             | Jackson St                      | Noble         | Rome City   | Ft. Wayne       |
| State Rd 9<br>(North end of<br>Bridge) | Jefferson St                    | Noble         | Rome City   | Ft. Wayne       |
| State Rd 9<br>(North end of            |                                 | Noble         | Rome City   | Ft. Wayne       |

| <b>Street 1<br/>(North/South)</b>  | <b>Street 2<br/>(East/West)</b> | <b>County</b> | <b>City</b>            | <b>District</b> |
|------------------------------------|---------------------------------|---------------|------------------------|-----------------|
| Bridge)Lake<br>(Sylvan Point)      |                                 |               |                        |                 |
| State Rd 9                         | Cemetery St                     | Lagrange      | Wolcottville           | Ft. Wayne       |
| State Rd 9                         | Mill St                         | Lagrange      | Wolcottville           | Ft. Wayne       |
| State Rd 9                         | Race St                         | Lagrange      | Wolcottville           | Ft. Wayne       |
| State Rd 9                         | N. Woodruff Rd.                 | Lagrange      | Wolcottville           | Ft. Wayne       |
| State Rd 9                         | CR 8005, East<br>Chicago St     | Noble         | Wolcottville           | Ft. Wayne       |
| State Rd 9                         | W. Dutch St                     | Noble         | Wolcottville           | Ft. Wayne       |
| State Rd 9                         | Lovett St                       | Noble         | Wolcottville           | Ft. Wayne       |
| State Rd 9                         | Orange St                       | Noble         | Wolcottville           | Ft. Wayne       |
| State Rd 9                         | Park St                         | Noble         | Wolcottville           | Ft. Wayne       |
| Park Ln<br>(Municipal Drive)       | US 40 ( E<br>Washington St.)    | Marion        | Cumberland             | Greenfield      |
| Carrol Rd                          | US 40 ( E<br>Washington St.)    | Marion        | Hancock/Cumb<br>erland | Greenfield      |
| US 40 (E.<br>Washington<br>Street) | Meussing Street                 | Marion        | Indianapolis           | Greenfield      |
| US 40 (E.<br>Washington<br>Street) | Hugo Street                     | Marion        | Indianapolis           | Greenfield      |
| US 40 (E<br>Washington St)         | Buck Creek Rd                   | Marion        | Indianapolis           | Greenfield      |
| Walmart                            | US 40 ( E<br>Washington St.)    | Marion        | Indianapolis           | Greenfield      |
| US 40 (E<br>Washington St)         | Kroger                          | Marion        | Indianapolis           | Greenfield      |
| German Church<br>Road              | US 40 ( E<br>Washington St.)    | Marion        | Indianapolis           | Greenfield      |
| US 40 (E<br>Washington St)         | Munsie St                       | Indianapolis  | Marion                 | Greenfield      |
| US 40 (E<br>Washington St)         | Washington Pointe<br>Dr.        | Indianapolis  | Marion                 | Greenfield      |
| US 40                              | Earlham Drive                   | Wayne         | Richmond               | Greenfield      |
| US 40                              | College Avenue                  | Wayne         | Richmond               | Greenfield      |
| US 40                              | 16th St.                        | Wayne         | Richmond               | Greenfield      |
| US 40                              | 11th St.                        | Wayne         | Richmond               | Greenfield      |
| US 40                              | 10th St.                        | Wayne         | Richmond               | Greenfield      |
| Main St. (State<br>Rd 3)           | 10th St.                        | Rush          | Rushville              | Greenfield      |

| <b>Street 1<br/>(North/South)</b> | <b>Street 2<br/>(East/West)</b>                            | <b>County</b>     | <b>City</b> | <b>District</b> |
|-----------------------------------|--|-------------------|-------------|-----------------|
| Main St. (State Rd 3)             | 5th St.  | Rush              | Rushville   | Greenfield      |
| Main St. (State Rd 3)             | 6th St.  | Rush              | Rushville   | Greenfield      |
| Main St. (State Rd 3)             | 8th St.  | Rush              | Rushville   | Greenfield      |
| Main St. (State Rd 3)             | 9th St.  | Rush              | Rushville   | Greenfield      |
| State Rte 44<br>(Miller Ave.)     | Standard Register Drive (East)/<br>Hubler Collision (West) | Shelby            | Shelbyville | Greenfield      |
| Miller Ave. (SR 44)               | Alabama St.  | Shelby            | Shelbyville | Greenfield      |
| Miller Ave. (SR 44)               | Hale Rd.   | Shelby            | Shelbyville | Greenfield      |
| Miller Ave. (SR 44)               | St. Joseph St.   | Shelby            | Shelbyville | Greenfield      |
| Miller Ave. (SR 44)               | Parker St.   | Shelby            | Shelbyville | Greenfield      |
| SR 4                              | Jefferson Ave  | La Porte          | La Porte    | La Porte        |
| US 31                             | Harrison St  | St. Joseph County | Lakeville   | La Porte        |
| US 31                             | Jackson St   | St. Joseph County | Lakeville   | La Porte        |
| US 31                             | Patterson St   | St. Joseph County | Lakeville   | La Porte        |
| US 31                             | Washington St  | St. Joseph County | Lakeville   | La Porte        |
| US 31                             | Wilson Dr  | St. Joseph County | Lakeville   | La Porte        |
| US 31                             | Rush St  | St. Joseph County | Lakeville   | La Porte        |
| US 31                             | Wilson Dr  | St. Joseph County | Lakeville   | La Porte        |
| US 31                             | Monroe St.   | St. Joseph County | Lakeville   | La Porte        |
| US 31                             | Jefferson St.  | St. Joseph County | Lakeville   | La Porte        |
| US 31                             | Cortland   | Marshall          | Lapaz       | La Porte        |

| <b>Street 1<br/>(North/South)</b> | <b>Street 2<br/>(East/West)</b> | <b>County</b>        | <b>City</b>   | <b>District</b> |
|-----------------------------------|---------------------------------|----------------------|---------------|-----------------|
| US 31                             | Randolph                        | Marshall             | Lapaz         | La Porte        |
| US 31                             | South                           | Marshall             | Lapaz         | La Porte        |
| US 31                             | Vandalia                        | Marshall             | Lapaz         | La Porte        |
| US 31                             | Walnut St                       | Marshall             | Lapaz         | La Porte        |
| US 20                             | Arch St                         | St. Joseph<br>County | New Carlisle  | La Porte        |
| US 20                             | Bray St.                        | St. Joseph<br>County | New Carlisle  | La Porte        |
| SR 23                             | Cedar St                        | St. Joseph<br>County | North Liberty | La Porte        |
| SR 23                             | Harrison St                     | St. Joseph<br>County | North Liberty | La Porte        |
| SR 23                             | Jefferson St                    | St. Joseph<br>County | North Liberty | La Porte        |
| SR 23                             | Market St                       | St. Joseph<br>County | North Liberty | La Porte        |
| SR 23                             | Mill St                         | St. Joseph<br>County | North Liberty | La Porte        |
| SR 23                             | Pine St                         | St. Joseph<br>County | North Liberty | La Porte        |
| SR 23                             | Price St                        | St. Joseph<br>County | North Liberty | La Porte        |
| SR 23                             | Rupel St                        | St. Joseph<br>County | North Liberty | La Porte        |
| SR 23                             | Wolf St                         | St. Joseph<br>County | North Liberty | La Porte        |
| SR 4                              | Henry St                        | St. Joseph<br>County | North Liberty | La Porte        |
| SR 4                              | Jefferson St                    | St. Joseph<br>County | North Liberty | La Porte        |
| SR 4                              | Lafayette St                    | St. Joseph<br>County | North Liberty | La Porte        |
| SR 4                              | Maple St.                       | St. Joseph<br>County | North Liberty | La Porte        |
| SR 4                              | SR 23                           | St. Joseph<br>County | North Liberty | La Porte        |
| SR 4                              | Stewart St                      | St. Joseph<br>County | North Liberty | La Porte        |

| <b>Street 1<br/>(North/South)</b> | <b>Street 2<br/>(East/West)</b> | <b>County</b>        | <b>City</b>   | <b>District</b> |
|-----------------------------------|---------------------------------|----------------------|---------------|-----------------|
| SR 4                              | Sylvia St                       | St. Joseph<br>County | North Liberty | La Porte        |
| SR 4                              | Williams St                     | St. Joseph<br>County | North Liberty | La Porte        |
| SR 4                              | Washington St.                  | St. Joseph<br>County | North Liberty | La Porte        |
| Central Ave                       | SR 46                           | Bartholomew          | Columbus      | Seymour         |
| Chestnut St.                      | SR 46 Eastbound<br>(2nd St)     | Bartholomew          | Columbus      | Seymour         |
| Franklin St.                      | SR 46 Eastbound<br>(2nd St)     | Bartholomew          | Columbus      | Seymour         |
| Lafayette Ave                     | SR 46 Eastbound<br>(2nd St)     | Bartholomew          | Columbus      | Seymour         |
| Sycamore St.                      | SR 46 Eastbound<br>(2nd St)     | Bartholomew          | Columbus      | Seymour         |
| Washington St.                    | SR 46 Eastbound<br>(2nd St)     | Bartholomew          | Columbus      | Seymour         |
| Jackson St.                       | SR 46 Eastbound<br>(2nd St)     | Bartholomew          | Columbus      | Seymour         |
| California St.                    | SR 46 Westbound<br>(3rd St.)    | Bartholomew          | Columbus      | Seymour         |
| Chestnut St.                      | SR 46 Westbound<br>(3rd St.)    | Bartholomew          | Columbus      | Seymour         |
| Franklin St.                      | SR 46 Westbound<br>(3rd St.)    | Bartholomew          | Columbus      | Seymour         |
| Jackson St.                       | SR 46 Westbound<br>(3rd St.)    | Bartholomew          | Columbus      | Seymour         |
| Lafayette Ave                     | SR 46 Westbound<br>(3rd St.)    | Bartholomew          | Columbus      | Seymour         |
| Pearl St.                         | SR 46 Westbound<br>(3rd St.)    | Bartholomew          | Columbus      | Seymour         |
| Washington St.                    | SR 46 Westbound<br>(3rd St.)    | Bartholomew          | Columbus      | Seymour         |
| Sycamore St.                      | SR 46 Westbound<br>(3rd St.)    | Bartholomew          | Columbus      | Seymour         |
| SR 46E                            | Edgewood Dr                     | Monroe               | Ellettsville  | Seymour         |

| <b>Street 1<br/>(North/South)</b>           | <b>Street 2<br/>(East/West)</b> | <b>County</b> | <b>City</b>  | <b>District</b> |
|---|---------------------------------|---------------|--------------|-----------------|
| SR 46E                                      | Indiana St                      | Monroe        | Ellettsville | Seymour         |
| SR 46                                       | Jacob St                        | Monroe        | Ellettsville | Seymour         |
| SR 46                                       | Judy St                         | Monroe        | Ellettsville | Seymour         |
| SR 46                                       | Red Hill Rd/Raymond Run         | Monroe        | Ellettsville | Seymour         |
| SR 46                                       | Ridge Springs Ln                | Monroe        | Ellettsville | Seymour         |
| SR 46                                       | W. Maple Grove Rd               | Monroe        | Ellettsville | Seymour         |
| SR 46E                                      | 2nd St                          | Monroe        | Ellettsville | Seymour         |
| SR 46E                                      | 3rd St                          | Monroe        | Ellettsville | Seymour         |
| SR 46E                                      | 4th St                          | Monroe        | Ellettsville | Seymour         |
| SR 46E                                      | 5th St                          | Monroe        | Ellettsville | Seymour         |
| SR 46E                                      | Matthews St/Cherry St           | Monroe        | Ellettsville | Seymour         |
| SR 46E                                      | Paul St                         | Monroe        | Ellettsville | Seymour         |
| SR 46E                                      | Poplar Dr                       | Monroe        | Ellettsville | Seymour         |
| SR 46E                                      | Walnut St                       | Monroe        | Ellettsville | Seymour         |
| N. Chestnut St.                             | SR 258 (W. 6th St)              | Jackson       | Seymour      | Seymour         |
| Community Dr.                               | SR 258 (W. 6th St)              | Jackson       | Seymour      | Seymour         |
| N. Elm St                                   | SR 258 (W. 6th St)              | Jackson       | Seymour      | Seymour         |
| N. Pine St.                                 | SR 258 (W. 6th St)              | Jackson       | Seymour      | Seymour         |
| N. Poplar St.                               | SR 258 (W. 6th St)              | Jackson       | Seymour      | Seymour         |
| N. Walnut St.                               | SR 258 (W. 6th St)              | Jackson       | Seymour      | Seymour         |
| S. Walnut St.                               | S. Park Dr                      | Jackson       | Seymour      | Seymour         |
| S. Walnut St.                               | N. Park Dr                      | Jackson       | Seymour      | Seymour         |
| Willemette Ave                              | SR 66 (Diamond)                 | Vanderburgh   | Evansville   | Vincennes       |
| Wedeking Ave                                | SR 66                           | Vanderburgh   | Evansville   | Vincennes       |
| Strington Rd                                | SR 66                           | Vanderburgh   | Evansville   | Vincennes       |
| Sherman St                                  | SR 66                           | Vanderburgh   | Evansville   | Vincennes       |
| Lafayette Rd                                | SR 66                           | Vanderburgh   | Evansville   | Vincennes       |
| Kratzville Rd (North)<br>Fulton Ave (South) | SR 66                           | Vanderburgh   | Evansville   | Vincennes       |
| Kentucky Ave                                | SR 66                           | Vanderburgh   | Evansville   | Vincennes       |
| Hercules Ave                                | SR 66                           | Vanderburgh   | Evansville   | Vincennes       |
| Heidelbach                                  | SR 66                           | Vanderburgh   | Evansville   | Vincennes       |
| Grand Ave                                   | SR 66                           | Vanderburgh   | Evansville   | Vincennes       |
| Governor St                                 | SR 66                           | Vanderburgh   | Evansville   | Vincennes       |



| <b>Street 1<br/>(North/South)</b> | <b>Street 2<br/>(East/West)</b> | <b>County</b> | <b>City</b> | <b>District</b> |
|-----------------------------------|---------------------------------|---------------|-------------|-----------------|
| Garrison Ave                      | SR 66                           | Vanderburgh   | Evansville  | Vincennes       |
| First Ave                         | SR 66                           | Vanderburgh   | Evansville  | Vincennes       |
| Evans Ave                         | SR 66                           | Vanderburgh   | Evansville  | Vincennes       |
| Elliot St                         | SR 66                           | Vanderburgh   | Evansville  | Vincennes       |
| Bedford Ave                       | SR 66                           | Vanderburgh   | Evansville  | Vincennes       |
| SR 57                             | B lockade St                    | Daviess       | Washington  | Vincennes       |
| SR 57                             | B lockade St                    | Daviess       | Washington  | Vincennes       |
| SR 57                             | Business 50                     | Daviess       | Washington  | Vincennes       |
| SR 57                             | Center                          | Daviess       | Washington  | Vincennes       |
| SR 57                             | Flora St                        | Daviess       | Washington  | Vincennes       |
| SR 57                             | Hefron                          | Daviess       | Washington  | Vincennes       |
| SR 57                             | Harned                          | Daviess       | Washington  | Vincennes       |
| SR 57                             | Maple St.                       | Daviess       | Washington  | Vincennes       |
| SR 57                             | Main St.                        | Daviess       | Washington  | Vincennes       |
| SR 57                             | SE 4th St.                      | Daviess       | Washington  | Vincennes       |
| SR 57                             | Railroad St                     | Daviess       | Washington  | Vincennes       |
| SR 57                             | Southside St                    | Daviess       | Washington  | Vincennes       |
| SR 57                             | Pearl St                        | Daviess       | Washington  | Vincennes       |
| SR 57                             | South St                        | Daviess       | Washington  | Vincennes       |
| SR 57                             | Van Tress                       | Daviess       | Washington  | Vincennes       |
| SR 57                             | Walnut                          | Daviess       | Washington  | Vincennes       |
| SR 57                             | Williams St                     | Daviess       | Washington  | Vincennes       |
| SR 57                             | Williams St                     | Daviess       | Washington  | Vincennes       |