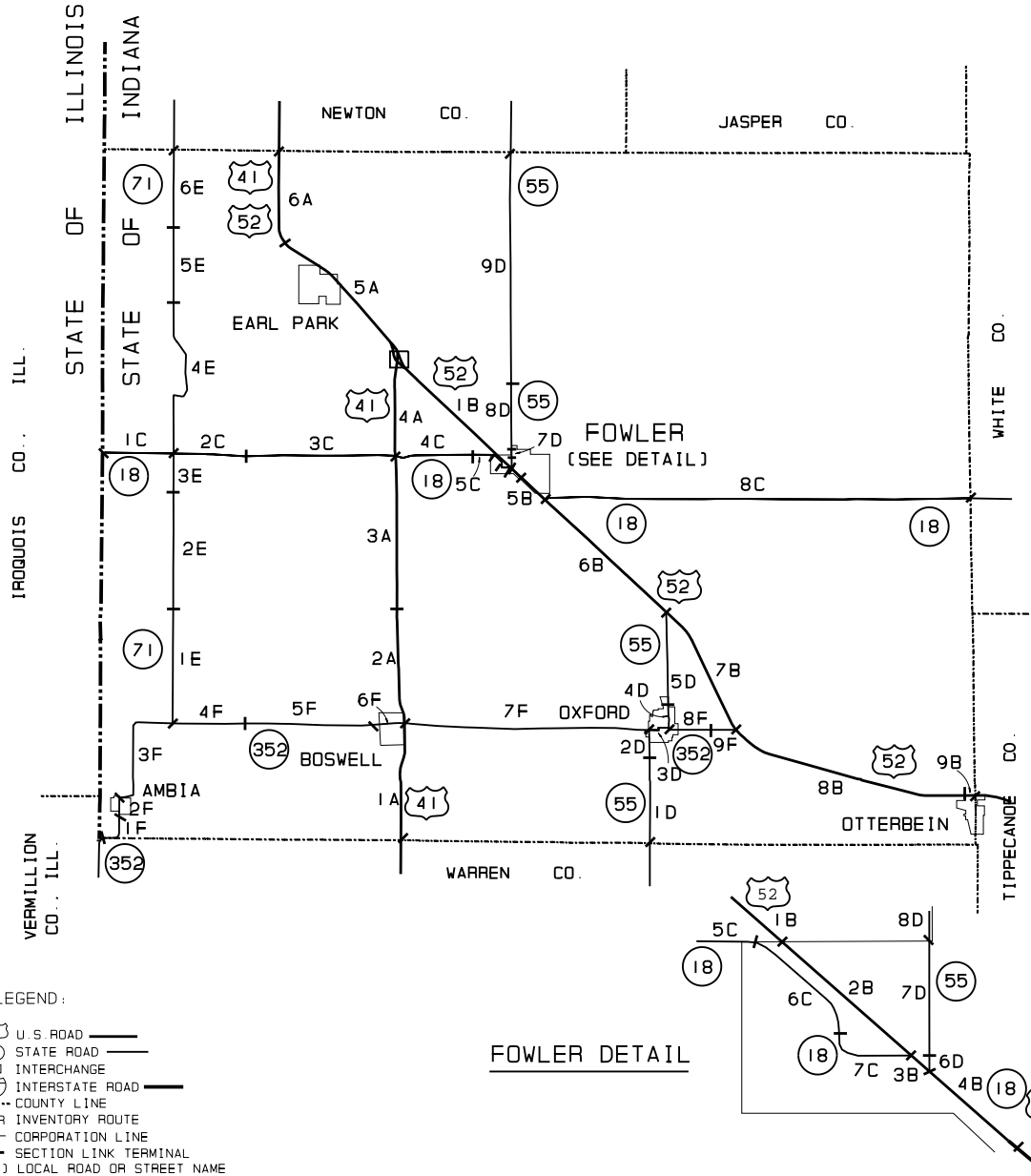


# BENTON



ROAD NO.	CODE NO.	TRAFFIC VOLUME	SECTION LINK TERMINI
US-41	1A	4300	Warren County Line
	2A	4860	SR-352
	3A	3860	IR-26 (300 South)
	4A	3380	SR-18
	5A	4800	US-52 (Jct East)
	6A	4600	IR-23 (600 West)
US-52			Newton County Line
			(US-52 follows over US-41)
	1B	1840	US-41 (South Jct.)
	2B	2350	IR-86 (Main St.)
	3B	3350	SR-18 (Jct. West)
	4B	4440	SR-55 (Jct. North)
	5B	4870	Ninth St. (Fowler)
	6B	4000	SR-18 (Jct. East)
	7B	3520	SR-55 (Jct. South)
	8B	6490	SR-352 (Jct. West)
SR-18	9B	7190	IR-84 (Old US-52)
			Tippecanoe County Line
	1C	250	Illinois State Line
	2C	390	SR-71
	3C	420	IR-15 (800 West)
	4C	1020	US-41
	5C	1150	IR-47 (100 West)
	6C	850	IR-86 (Main St.)
	7C	1040	Fourth St. (Fowler)
	8C	730	US-52 (Jct. West)
SR-55			(SR-18 follows over US-52)
			US-52 (Jct. East)
			White County Line
	1D	840	Warren County Line
	2D	1020	IR-109 (675 South)
	3D	3410	SR-352 (Jct. West)
	4D	2960	SR-352 (Jct. East)
	5D	1800	McClure St. (Oxford)
	6D	1170	US-52 (Jct. East)
7D	2260	(SR-55 follows over US-52)	
SR-71	8D	1170	US-52 (Jct. West)
	9D	700	5th St. (Fowler)
	1E	200	Main St. (Fowler)
	2E	180	IR-50 (300 North)
	3E	280	Newton County Line
	4E	140	SR-352
SR-352	5E	150	IR-26 (300 North)
	6E	360	IR-38 (East/West Baseline)
	1F	350	SR-18
	2F	430	IR-54 (500 North)
	3F	570	IR-66 (700 North)
	4F	610	Newton County Line
	5F	680	Warren County Line
6F	1280	Walnut St. (Ambia)	
7F	1920	Maple St. (Ambia)	
SR-18	8F	3480	SR-71 (Jct. North)
	9F	3340	IR-13 (700 West)
			Stokes St. (Boswell)

NOTE: Volumes Are Adjusted For Three Or More Axles.

- LEGEND:
- U.S. ROAD
  - STATE ROAD
  - INTERCHANGE
  - INTERSTATE ROAD
  - COUNTY LINE
  - IR INVENTORY ROUTE
  - CORPORATION LINE
  - SECTION LINK TERMINAL
  - LOCAL ROAD OR STREET NAME

FOWLER DETAIL